

Working diagrams

Palfinger P 200 TXE-E Plus

on

Iveco Daily 35S14

The working diagrams shown below have the following preconditions:

Solid line:

Maximum working diagram

Working height = height of basket bottom + 2.0 m

Workman basket turned into optimum position

The following applies generally:

All specifications refer to standard aluminum basket without additional equipment

Note on working diagram:

Additional attachments that deviate from the standard may reduce outreach and/ or basket load

Special baskets result in reduced outreach and/ or basket load

Permitted maximum basket load according to technical description

The outreaches are approximate dimensions and depend on the chassis, the type of support and the lifting platform's additional equipment.

Illustrations of truck and unit are only of symbolic nature and do not allow any conclusions regarding technical design.

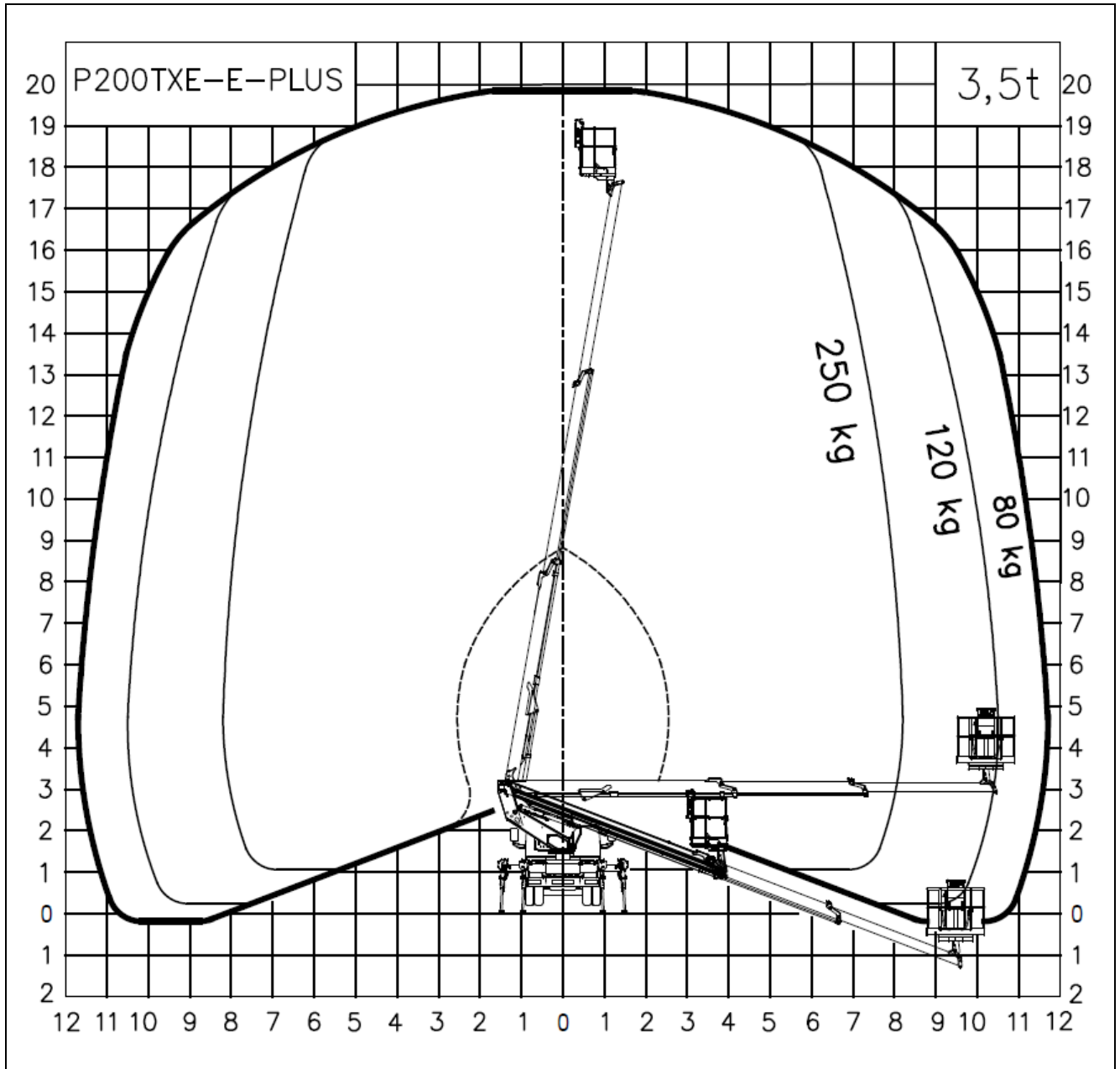
Subject to technical change!

Palfinger P 200 TXE-E Plus

Rear view

Extension of stabiliser outrigger

Front left	100%
Front right	100%
Rear left	0%
Rear right	0%

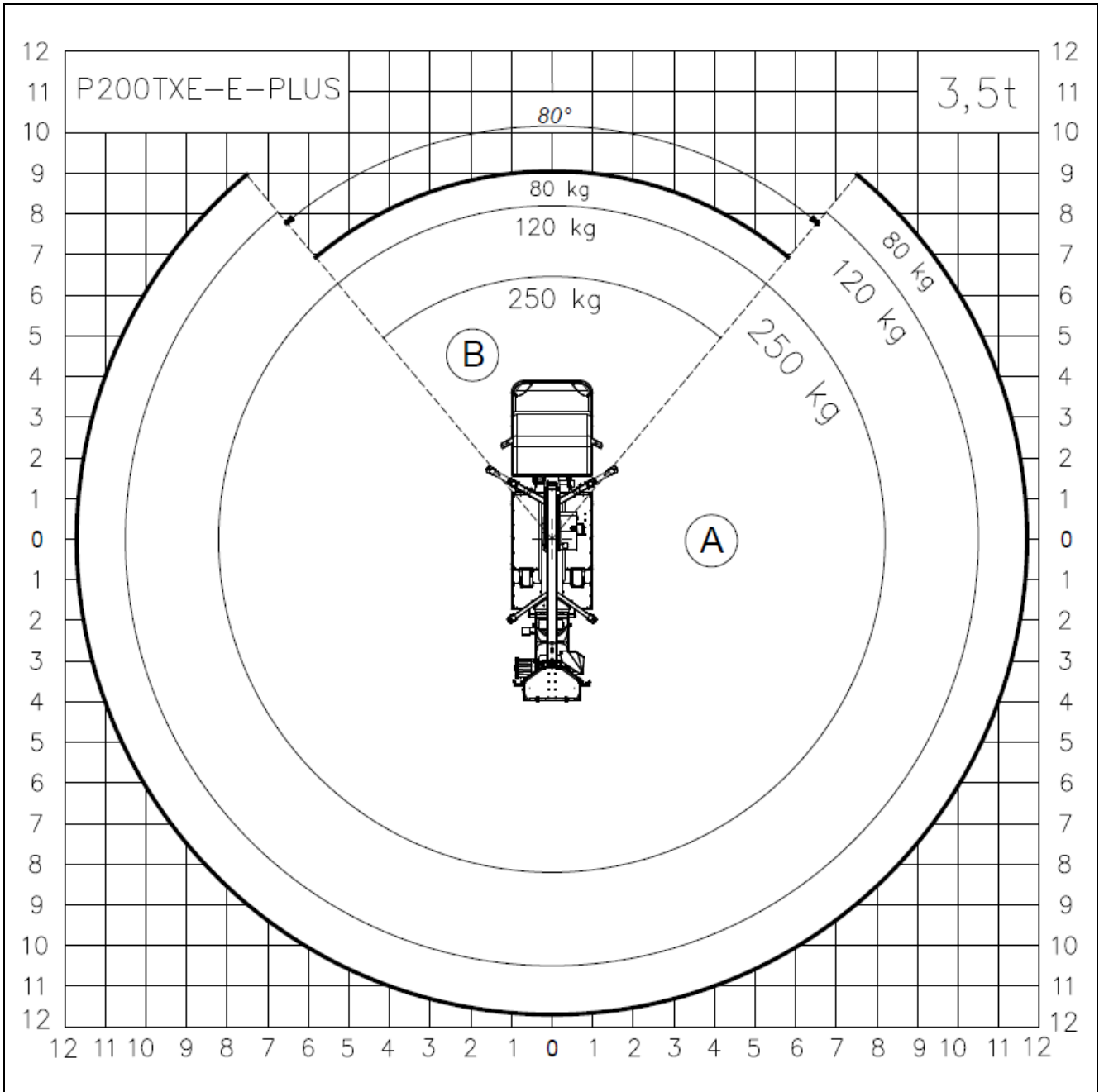


Palfinger P 200 TXE-E Plus

Top view

Extension of stabiliser outrigger

Front left	100%
Front right	100%
Rear left	0%
Rear right	0%

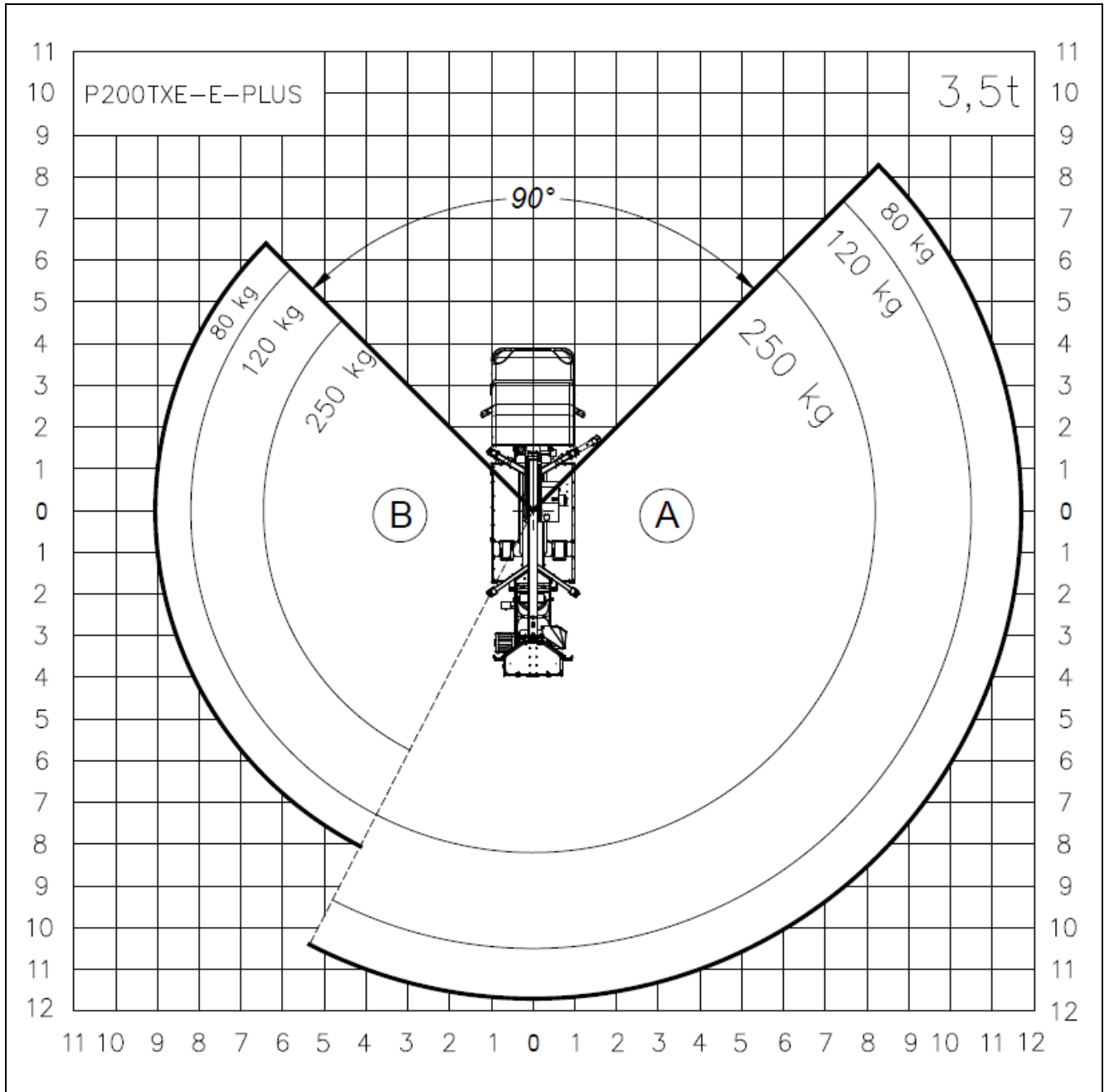


Palfinger P 200 TXE-E Plus

Top view

Extension of stabiliser outrigger

Front left	0%
Front right	100%
Rear left	0%
Rear right	0%

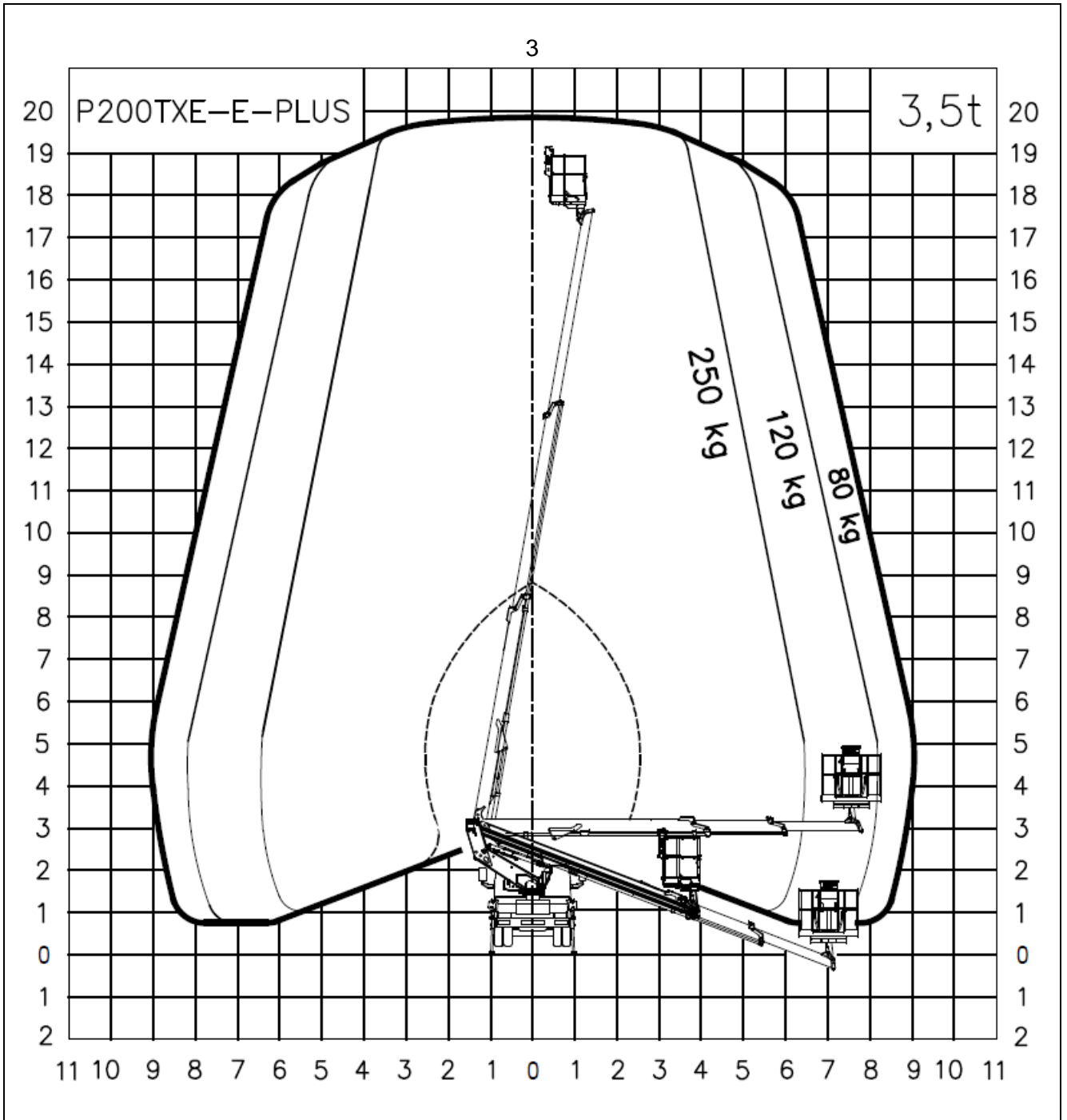


Palfinger P 200 TXE-E Plus

Rear view

Extension of stabiliser outrigger

Front left	0%
Front right	0%
Rear left	0%
Rear right	0%



Palfinger P 200 TXE-E Plus

Top view

Extension of stabiliser outrigger

Front left	0%
Front right	0%
Rear left	0%
Rear right	0%

