

PA 19001 BRIDGE INSPECTION UNIT

**SAFE, EFFICIENT AND
FLEXIBLE – ABOVE AND
BELOW THE BRIDGE**

LIFETIME EXCELLENCE



LIFETIME EXCELLENCE

PALFINGER Bridge Maintenance Technology stands for the most innovative, most reliable and most cost-efficient product solutions for maintaining bridges. Decades of experience in the development and manufacture of cranes, lifting platforms and special machinery mean our customers can be assured of lifetime excellence. In conjunction with our customers we create bespoke solutions around the globe - and support them over their entire product life.

Multi-functional 3-in-1 machine

- The universal and multi-functional way in which the PA 19001 can be used is unique. The vehicle acts not only as under bridge inspection unit, but also as a fully-fledged working platform and in hook operation as a loader crane.
- The PA 19001 can be mounted on all standard production trucks with a permissible total weight of at least 15 tonnes as well as on road-rail vehicles and rolling stock.
- Operating companies can plan deployments of it nationwide without hesitation. Thanks to its compact dimensions and modest weight it adheres to road traffic regulations, additional work and costs are avoided and there is nothing to prevent flexible planning of its use.

Low maintenance, reliable and excellent value for money

- Under bridge inspection and railway appliances from Palfinger have been successfully in use around the world for over 30 years. A prerequisite for this is sustained product enhancement and constantly improving quality. As an experienced and long-term partner, we stand for reliability at great value for money.
- Optimum corrosion protection through KTL and powder coating guarantee high value retention.
- Low on maintenance, rarely needing to be repaired and with modest procurement and running costs, the PA 19001 achieves excellent cost-efficiency across its entire product life cycle.
- Everything from a single source: the Palfinger assembly centre can provide a first-class vehicle installation service where desired. Fully coordinating our work with the vehicle manufacturers, we mount our products in accordance with their installation guidelines, wholly preserving the warranty for the carrier vehicle.



AREAS OF USE



Bridge Inspection Unit

Specially developed for use under and along bridges. The flexible boom system facilitates good accessibility even when working with complex bridge structures.



Lifting Platform

For deployments above street level the fly jib gives the inspection appliance an advantage over conventional working platforms.



(Loader) crane

The PA 19001 can also be used as a crane with 18 mt lifting capacity. In that case the PALFINGER radio remote control guarantees freedom of movement for precise working in one-man operation.

MAXIMUM OPERATOR SAFETY

Safety and ease of use

- Safety has top priority at PALFINGER. Thanks to constant enhancement and the use of leading edge technology, PALFINGER appliances are among the safest on the market. When extended to the maximum, the machine's complete geometry is monitored. This, in combination with real-time stability control, facilitates an extremely high level of performance while simultaneously ensuring the highest possible level of safety.
- The use of a counterweight increases the vehicle's stability. This makes shorter support widths possible. As a result of the reduced width it is possible, for instance, to leave the flow of traffic running in the opposite direction on the bridge unimpeded.
- Provision is made on the appliance for climbing up onto it easily and safely and for loading and unloading at carriageway level and on the vehicle.
- For maximum safety when working near to live power lines an electrical grounding of the basket and vehicle is available.
- As we are leaders in railway engineering systems, the appliance naturally includes a top-level limiter system to prevent slewing across adjacent tracks, a height limitation function, protection against derailling and a track superelevation compensation function.



NOWHERE THAT CANNOT BE REACHED

Huge reach with minimal need for space

- The unique way in which the PA 19001 works makes it equally indispensable for bridges of both simple and complex form (e.g. for girder, arched and cable-stayed bridges). Optimised for use in conditions of limited space and when working and weaving between obstacles (power lines, road signs, shipping signs, lamp posts, etc.).
- Sophisticated kinematic linkage, compact dimensions and minimal space requirement in all working positions thanks to 5 extension booms distributed over 2 knuckle booms following one after the other and a compact, self-levelling basket. By virtue of this unique design it is possible to reach exposed points both above and underneath the carriageway.
- The linkage systems at the boom articulation points help to ensure linear force progression and consistent speed of movement in many boom positions. The PA 19001 masters the challenges of modern construction architecture, such as high noise barriers, wide pavements and other safeguards.

Short set-up times guarantee high availability

- Clients expect minimal downtime in order to keep the availability of transport routes high. Short set-up time, fast sequences of movement and a precise, very responsive control system contribute significantly to this.
- As mobile or stationary inspections are made, the PA 19001 and the vehicle are controlled from the two-person basket, which can be fitted with custom features.
- In crane mode the very precise PALFINGER radio remote control system guarantees optimum freedom of movement and especially efficient working in solo operation. The removal of jib and basket required for this takes just a few minutes.

Easy and intuitive to use

The simple and intuitive operating logic enables work to be done quickly and safely. Set-up and operational functions plus vehicle propulsion are smoothly and precisely controlled from the control panel. Depending on application it is possible to use the remote control panel, via radio control or with a cable connection. Important information such as load limits, tilt angle, etc. is shown directly on the display of the remote control unit.





CARRIER VEHICLES



Road vehicles

The bridge inspection unit can be mounted on all standard production trucks with a maximum permissible total weight of at least 15 tonnes.

Road-rail vehicles

Using it on a road-rail vehicle makes the PA 19001 a universal access appliance. Mounted on a road-rail vehicle it can be brought along the track quickly and inexpensively to the place where it is to be used. Moving onto and off of the rails is no problem for the compact vehicle, even on narrow level crossings.



Rolling stock

For the inspection of bridges along railway lines it is predominantly appliances mounted on rolling stock that are used.

Interchangeable superstructures

Interchangeable superstructures are an efficient way of significantly expanding the manifold possible uses of your vehicle and thus of increasing its level of utilisation.

THE FEATURES OF THE WORKMAN BASKET **OPTIMISED FOR YOUR USE**



The lightweight one: BB40



The compact one: BB15

Workman basket options:

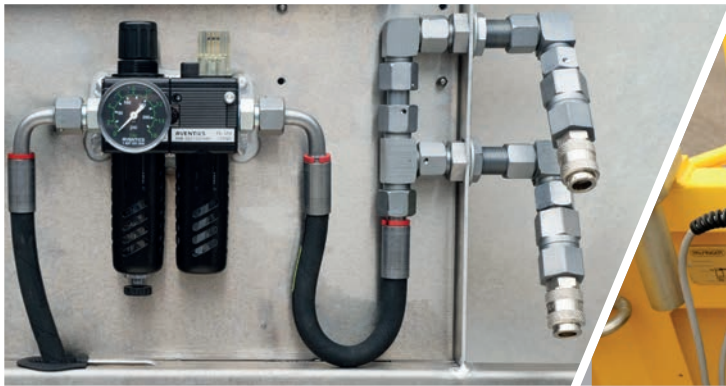
In order to arrange the working environment as efficiently and helpfully as possible, numerous options are available. Work lights and basket lighting facilitate safe working even in poor visibility, rubber mats with optional underfloor heating are very comfortable especially on longer jobs and connections for various energy supplies, such as electricity or compressed air, facilitate universal use of a range of different tools.



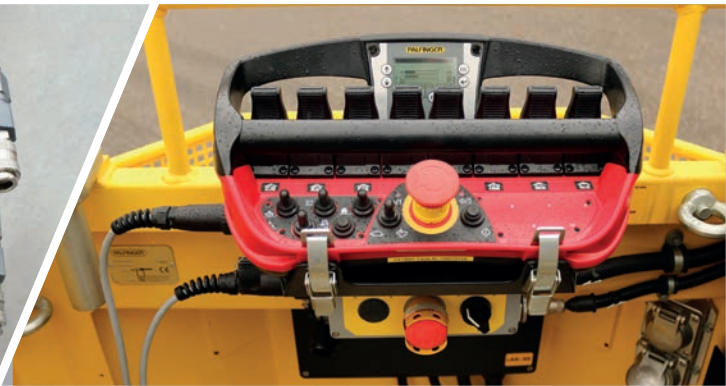
Insertable working lights



Variable electrical plugs in the basket



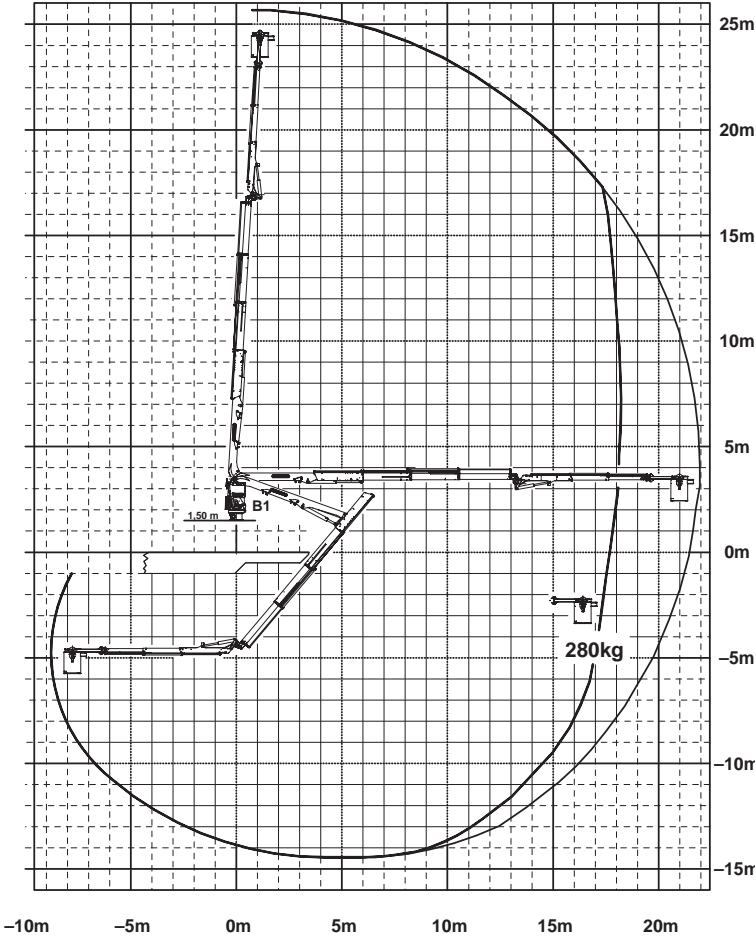
Pneumatic supply for tools



Radio remote control

LARGE WORKING RANGE

PA 19001



Technical specifications

Max. horizontal outreach	+ 21.0 m / -11.5 m
Maximum working height/depth	+ 25.0 m / -14.5 m
Max. basket payload	280 kg
Slewing range	450° / Optionally endless

Working range

- Vertically 25 m up and 14.5 m down
- Horizontally up to 21 m above the structure and 11.5 m below the bridge
- To suit the respective area of use, varying boom lengths are available for reaching over noise barriers and pavements.

ABOUT US



Best performance

The premium quality and great durability of the products, long-lasting components and outstanding workmanship, the assurance of global support and the stability and strength of the company make PALFINGER a highly reliable partner for all professionals in the business.



High availability for use

Constant availability of your vehicle is very important to us. Able to be deployed anywhere in the world, our mobile support team make their contribution to this with modern means of assistance such as online documentation and remote diagnosis. Reliable availability of spare parts - even decades later - enable efficient use of the machines over the entire product life cycle.

Training from the manufacturer

The training of operators on the specifics of the machine is a fundamental prerequisite for safe, economically efficient working. After the machine has been professionally commissioned by the PALFINGER support team, operator induction takes place as part of the machine hand-over either at the factory or on site. Comprehensive operator training sessions and sessions shadowing use of the machine under real-world conditions can, on request, be added to the service we provide. In addition, Palfinger offers comprehensive servicing training sessions in our modern, specially equipped training and demo centre.

The company PALFINGER

Established in 1932 and headquartered in Salzburg/Austria, the company has for many years been among the leading international manufacturers of innovative, reliable and efficient hydraulic lifting systems in the line of commercial vehicles and in the maritime field. With 38 manufacturing and assembly sites and around 5.000 sales and service outlets worldwide PALFINGER is always close to the customer.



KP-19001M1+EN

Cranes shown in the leaflet are partially optional equipped and do not always correspond to the standard version. Country-specific regulations must be observed. Dimensions may vary. Subject to technical changes, errors and translation mistakes.