

# **PAL PRO 58** **MECHANICS TRUCK**

Mechanics Bodies, Service Cranes & Compressors  
Built for the Modern Work Truck.

**LIFETIME EXCELLENCE**



# ONE STRONG PARTNER FOR ALL YOUR NEEDS

## A NEW ERA OF CRANE TECHNOLOGY

Introducing our groundbreaking crane and crane body tailored for Class 5 applications, meticulously engineered to achieve weight reduction, extended reach, and unparalleled performance.

The PAL Pro 58 comes with the integrated PSC 8600 TEC service crane. The new crane features a 8,600lb capacity, and a 58,000ft\*lb moment rating. Continuing our commitment to safety, our integrated overload protection system at the winch ensures operational reliability without additional mechanical components, while relocating the winch to a boom-mounted position streamlines operation and eliminates cable concerns. The integration of Load Moment Indication (LMI) is a standard feature on the PSC 8600 Service Crane, providing operators with real-time load-on-hook information and total capacity percentages.

The PAL Pro 58 is manufactured with 12-gauge all A-60 galvaneal steel construction, a hybrid torsion box that eliminates frame and side pack deflection and the best rust protection in the industry. Available in 11' body configurations with standard options to meet your service truck needs including bolt-on mounting locations for accessories like compressors and welders, headache racks, aluminum roll out drawer units; while providing improved lighting packages for remote work and activities during nighttime hours.

Building on over 90 years of global crane design expertise, we're pioneering advanced features that will revolutionize the service industry.



## MECHANICS BODIES

With true crane bodies and the most durable crane reinforced body in the industry, PAL Pro Mechanics Bodies are reliable partners for mobile heavy equipment service providers. Our true crane bodies are built specifically to handle the forces applied by the crane from the very start of their design. They feature less weight and stronger capacities, while the all A-60 galvaneal construction and e-coat protection ensure a long life on the jobsite.

## SERVICE CRANES

With capacities up to 14,000 lbs., designed to meet or exceed ASME B30.5 and OSHA 1910 and OSHA 1926 standards, PALFINGER Service Cranes offer wireless proportional control, an industry-leading Two-Block Damage Prevention System, and single-weld hexagonal boom designs.



## COMPRESSORS

Built for the modern work truck, PALFINGER offers the lightest and most compact rotary screw air compressors available with 25-60 CFM of continuous air output, at 100% duty cycle.

# SETTING NEW INDUSTRY STANDARDS

## PSC 8600 TEC Service Crane

### CRATE RATING

Rated lifting moment	58,000 ft*lbs (78.6 kNm (8.0 m))
Maximum lifting moment	62,900 ft*lbs (85.3 kNm (8.7 m))
Boom extensions - 2 hydraulic	31 ft. (9.5 m) 22 ft. (6.7 m) Option
Crane weight	1,860 lbs. (844 kg)
Hydraulically powered extensions	

### CONTROL SYSTEM

Wireless remote control unit	
Integrated E-stop button	
Manual emergency valve activation capability	
Integrated warning horn	

### ROTATION SYSTEM

Slewing angle	Continuous rotation
Worm gear drive with surface hardened gear teeth	

### STANDARD (meets or exceeds)

Crane design	ASME B30.5 OSHA 1910.28
Calculation	EN 12999 H1, B6

### PLANETARY GEAR WINCH

Max. winch force single line	4,300 lbs. (1,950 kg)
Max. winch force double line	8,600 lbs. (3,900 kg)
Max. line speed	72 ft/min (21.9m/min)
Two-block damage prevention system	
3rd wrap end stop system	

### HYDRAULIC SYSTEM

Operating pressure	2,800 psi (19 Mpa (193 bar))
Recommended oil flow	10 GPM (38 l/min)
Electronic overload protection system	
Five stage marine-grade seals on all cylinders	
Integrated load-holding valves	

### CHASSIS RECOMMENDATION

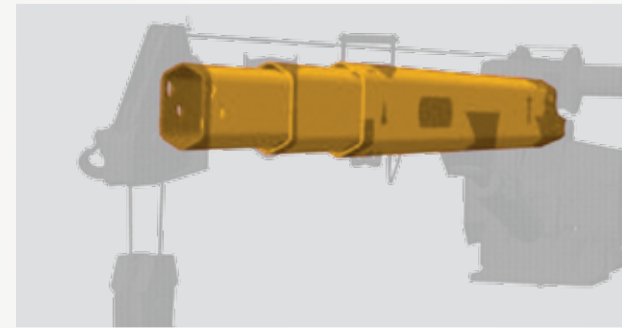
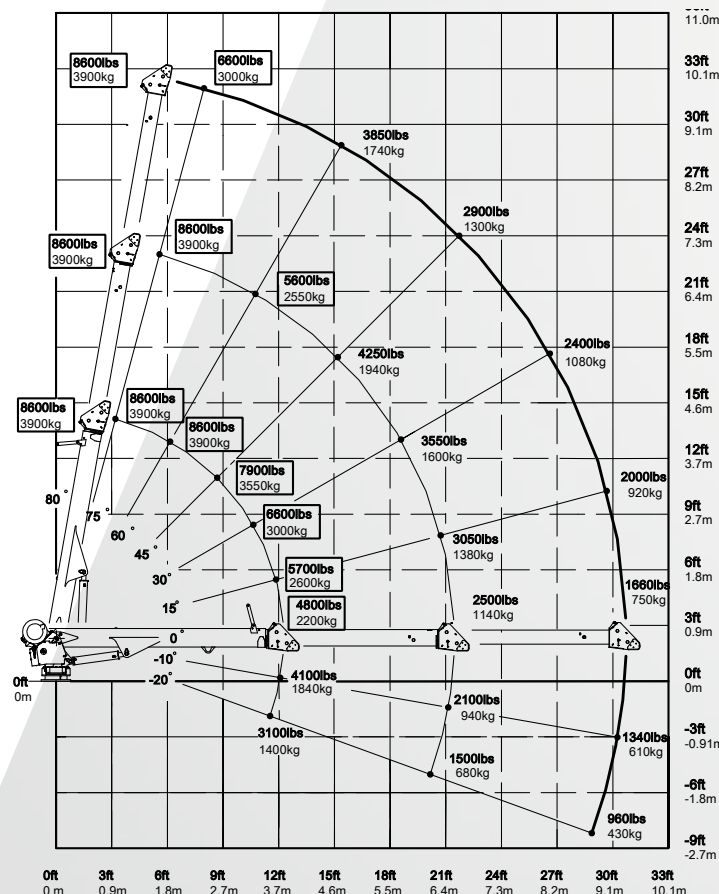
Chassis style	Conventional
Minimum GVWR	Class 5 (19,500 lbs. (8,845 kg))



### INTELLIGENT WINCH CONSOLE (IWC) ELIMINATES BOOM TIP APPARATUS AND REEL

Two-block damage prevention system is integrated into the winch mounting platform eliminating the need for boom tip apparatus and cord reel. Complies with ASME B30.5.

Weights of load-handling devices are part of the load lifted and must be deducted from the capacity. Boxes denote two-part line required.



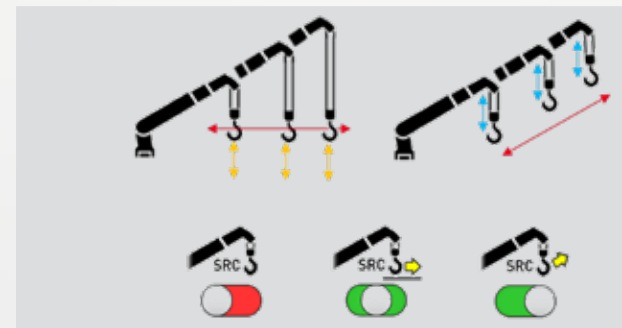
### HEXAGONAL BOOMS PROVIDES SUPERIOR STRENGTH

Hexagonal booms are constructed using ultra-low maintenance high tensile strength self-centering single weld sections powered by internal extension cylinders.



### EXTENSION CYLINDERS DELIVER EXCEPTIONAL PERFORMANCE & DURABILITY

Internal extension cylinders provide up to 31' of hydraulically powered outreach. All cylinders are E-coated and use a 5-stage marine grade seal system.



### SYNCHRONIZED ROPE CONTROL (SRC) OPERATOR FRIENDLY

Reduce unnecessary corrections. Activate SRC mode via the graphic display.



### PISTOL GRIP REMOTE CONTROL FUNCTIONAL DESIGN

Ergonomic toggles & trigger. Side buttons for quick menu access. Emergency stop button.

## TRUE CRANE BODIES DESIGNED FOR PROFESSIONAL FIELD MECHANICS

### INTERIOR COMPARTMENT & TRUCK BED COATING FOR GREATER PROTECTION

Zolatone coatings protect compartment interiors, and factory applied Ultimate Linings in truck bed and on compartment tops. Helps to reduce damage commonly caused by tools, chains, parts, and chemicals.

### CONTINUOUS SLEWING

Continuous slewing mechanism permits an unrestricted radius of action

### NON-MARRING BOOM REST

Designed to protect the boom structure and coatings to extend the life of your crane.



### DOOR DESIGN ELIMINATE WELDING

Aluminum double panel doors with internal C-channel stiffeners, adhered with structural adhesive.

### BOLT ON HANDRAIL OPTION FOR ADDED SAFETY

Ergonomically designed handrail option, with a stable surface to grip, for added security against tripping or slipping hazards.

### ADVANCED LIGHTING OPTIONS

Allows work during nighttime operations. Body lights, crane work lights, cargo lights, interior LED lights, auxiliary lights, drip rail lights.

### CONTROL DRAWER

Control drawer houses valve and electronics with access to overrides and diagnostic display.

## FEATURES



### INTERNAL GUSSETS PREVENTS BODY CRACKING

Every raised compartment comes with PALFINGER's engineered gussets for increased protection against the body cracking in the door corner.



### STRUCTURAL CROSS-MEMBERS PAYLOAD SUPPORT

Tubular 3" x 5" structural steel crossmembers interlace the torsion box to support compartment loads.



### E-TRACK INSIDE LOAD BED SPACE & INTERIOR COMPARTMENTS

Adjustable E-track mounting system with material hooks.



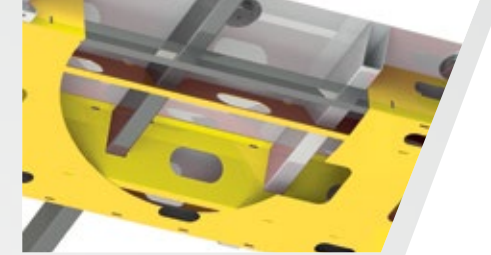
### WORK BENCH BUILT FOR YOUR HARD WORK

A true mechanics work bench, featuring a 24" workbench bumper, receiver hitch, 1/4" steel top plate and thru compartment for additional storage.



### OUTRIGGER HOUSING INTEGRATED LIFTING SUPPORT

Integrated outrigger tube reduces stress on chassis frame by transferring the crane load directly to the ground.



### HYBRID TORSION BOX BUILT FOR CRANES

Designed from the start for crane applications and utilizing 10ga A-60 galvaneal steel, the hybrid torsion box eliminates truck frame twist and side pack deflection.

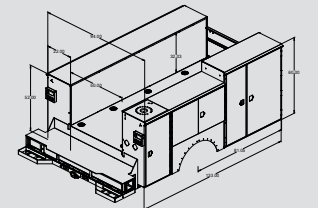


### AUXILIARY LIGHT PANEL

Aluminum bolt-on auxiliary light panel with recessed license plate and camera location.

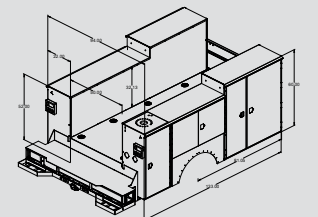
### 58-11CS

52" tall compartment heights  
CS front compartments raised to 60"  
14" tall one handed tailgate  
Treadplate compartment top overlays  
Reinforced raised compartment



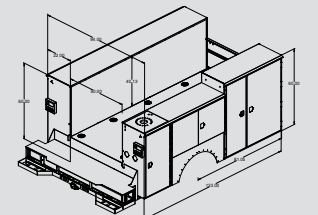
### 58-11SSCS

52" tall compartment heights  
SS & CS front compartments raised to 60"  
14" tall one handed tailgate  
Treadplate compartment top overlays  
Reinforced raised compartment



### 58-11SS60CS

52" tall compartment heights  
SS all compartments raised to 60"  
CS front compartments raised to 60"  
14" tall one handed tailgate  
Treadplate compartment top overlays  
Reinforced raised compartment



## STANDARD CONFIGURATIONS

**COMPACT & POWERFUL**

# COMPRESSORS

The PALFINGER PRC 45V and 60V compressor models are hydraulic driven deck mounted rotary screw air compressors built for the modern work truck. When space is at a premium and weight savings is a priority, rely on the smallest and lightest hydraulic deck mount compressor available. Our compressor systems are designed to work in the most extreme climate conditions, with built-in protection to operate anywhere you work. With two models that provide a CFM range of 25-60 CFM of continuous air output, at 100% duty cycle, you can expect PALFINGER compressors to handle your workload.

## EASY TO OPERATE

How easy? Simply press the on/off button on the digital display box. The control system will take care of the rest! The display will show the system status and if something isn't right, it will tell you. When you stop using air for any reason, the compressor goes into Standby Mode. This means essentially it is off, but ready to start up automatically the moment you need air\*.

\*Assuming proper safety conditions are in place: truck is parked safely and PTO engaged.

### INTEGRATED HYDRAULIC/COMPRESSOR OIL COOLER

12V activated fan, turns on/off automatically to adapt to hydraulic and compressor oil temperature.

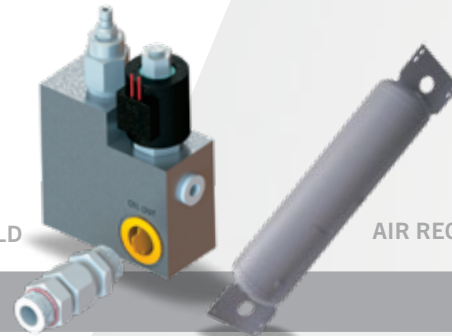
### DIGITAL CONTROL MODULE

Controls system operation and stored settings.

### ROTARY SCREW AIR COMPRESSOR

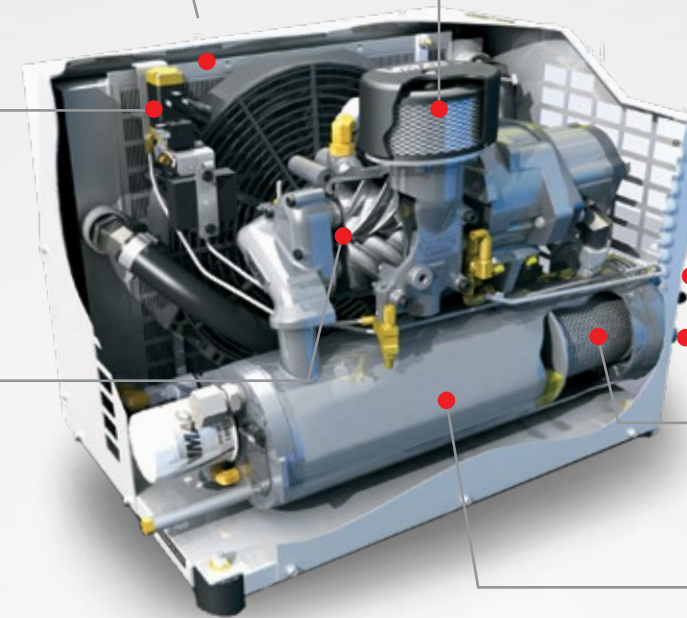
25-60 CFM 100% duty cycle rotary screw compressor, directly driven off hydraulic motor.

COLD CLIMATE MANIFOLD



AIR RECEIVER TANK

AIR FILTER



### DIGITAL DISPLAY BOX

LCD for controls, observing system status and adjusting parameters, mounts where needed on truck.



### HYDRAULIC MANIFOLD

Controls flow of hydraulic oil through the system.

### AIR DISCHARGE

### COALESCING FILTER

### AIR/OIL SEPARATOR TANK

Separates compressor oil from compressed air.

## TECHNICAL SPECIFICATIONS

	PRC 45V	PRC 60V	PRC 45V	PRC 60V
<b>COMPRESSOR</b>	Style	Oil-injected Rotary Screw	Oil-injected Rotary Screw	Oil-injected Rotary Screw
	Air Delivery	45 CFM @ 100 psi (7 bar)	60 CFM @ 100 psi (7 bar)	60 CFM @ 100 psi (7 bar)
	Max. System Pressure	150 psi (10.3 bar)	150 psi (10.3 bar)	150 psi (10.3 bar)
	Duty Cycle	Continuous, 100%	Continuous, 100%	Continuous, 100%
	Drive	Spline Drive, (Hydraulic Driven Motor)	Spline Drive, (Hydraulic Driven Motor)	Spline Drive, (Hydraulic Driven Motor)
	Air Outlet	3/4" NPT	3/4" NPT	3/4" NPT
	Integrated Valves	Automatic Air Pressure Blow-down Valve, One-way Air System Check Valve, 200 psi Air Pressure Relief Valve	Automatic Air Pressure Blow-down Valve, One-way Air System Check Valve, 200 psi Air Pressure Relief Valve	Automatic Air Pressure Blow-down Valve, One-way Air System Check Valve, 200 psi Air Pressure Relief Valve
<b>HYDRAULICS</b>	Flow Requirement	9-14 GPM (34-53 LPM)	12-18 GPM (45-68 LPM)	12-18 GPM (45-68 LPM)
	Normal Operating Pressure	1,900 psi (131 bar)	2,500 psi (172 bar)	2,500 psi (172 bar)
	Max. Operating Pressure	2,345 psi (162 bar)	2,750 psi (189 bar)	2,750 psi (189 bar)
	Inlet Port Size	#12 ORB	#12 ORB	#12 ORB
	Outlet Port Size	#16 ORB	#16 ORB	#16 ORB
Hydraulic Cooler	Integrated Dual Chamber Hydraulic & Compressor Oil Radiator w/ 12 volt Thermally Activated 16" Cooling Fan	Integrated Dual Chamber Hydraulic & Compressor Oil Radiator w/ 12 volt Thermally Activated 16" Cooling Fan	Integrated Dual Chamber Hydraulic & Compressor Oil Radiator w/ 12 volt Thermally Activated 16" Cooling Fan	Integrated Dual Chamber Hydraulic & Compressor Oil Radiator w/ 12 volt Thermally Activated 16" Cooling Fan
<b>ELECTRICAL</b>	Controls	LCD Digital Display Box (System status, adjustable parameters, error reporting)	LCD Digital Display Box (System status, adjustable parameters, error reporting)	LCD Digital Display Box (System status, adjustable parameters, error reporting)
	Fan	16", 12V Thermally Activated	16", 12V Thermally Activated	16", 12V Thermally Activated
	Shutdown	High Compressor and Hydraulic Oil Temp Shutdown	High Compressor and Hydraulic Oil Temp Shutdown	High Compressor and Hydraulic Oil Temp Shutdown
<b>SAFETY &amp; MAINTENANCE</b>	Indicators	LED indicators on Control Box	LED indicators on Control Box	LED indicators on Control Box
	Access	Removable top, front and side Panels	Removable top, front and side Panels	Removable top, front and side Panels
	Cold Start	Cold Start Protection	Cold Start Protection	Cold Start Protection
	Pressure Relief	200 psi (13.8 bar) Air Pressure Relief Valve	200 psi (13.8 bar) Air Pressure Relief Valve	200 psi (13.8 bar) Air Pressure Relief Valve
	Hydraulic Pressure Relief	2,800 psi (193 bar) Hydraulic Pressure Relief Valve	3,300 psi (227 bar) Hydraulic Pressure Relief Valve	3,300 psi (227 bar) Hydraulic Pressure Relief Valve
<b>ADDITIONAL SPECS</b>	Cooler Bypass	Hydraulic Cooler Bypass Check Valve	Hydraulic Cooler Bypass Check Valve	Hydraulic Cooler Bypass Check Valve
	Dimensions	16.5" W x 24.0" L x 18" H (42 cm W x 61 cm L x 46 cm H)	16.5" W x 24.0" L x 18" H (42 cm W x 61 cm L x 46 cm H)	16.5" W x 24.0" L x 18" H (42 cm W x 61 cm L x 46 cm H)
	Weight (Dry)	150 lbs (68 kg) (dry)	150 lbs (68 kg) (dry)	160 lbs (73 kg) (dry)
	Canopy	Powder Coated Aluminum	Powder Coated Aluminum	Powder Coated Aluminum

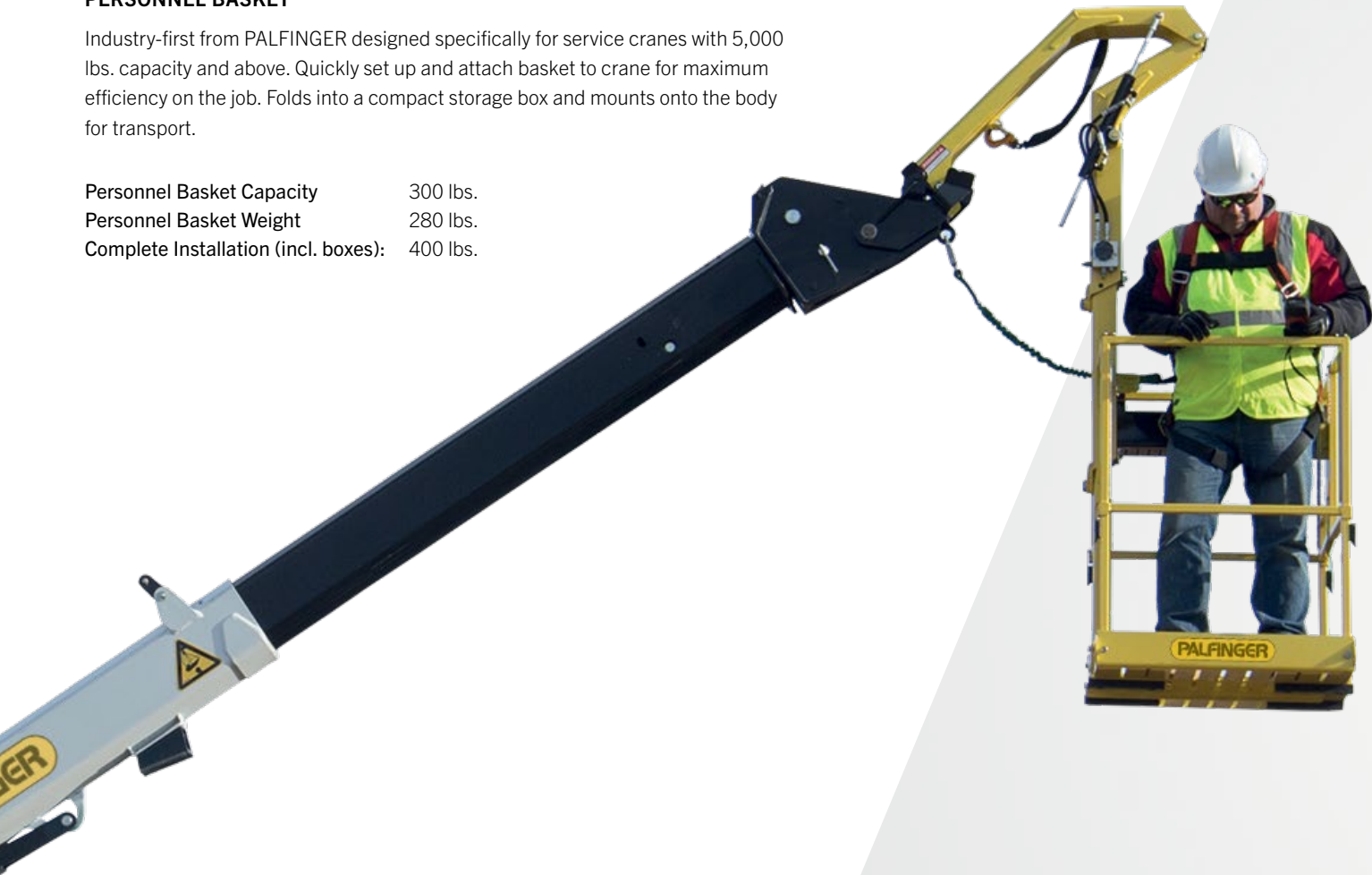
# OPTIONS & ACCESSORIES

Many optional features are available for PALFINGER service cranes to meet your demands on the job. Contact your PALFINGER Representative to learn more!

## PERSONNEL BASKET

Industry-first from PALFINGER designed specifically for service cranes with 5,000 lbs. capacity and above. Quickly set up and attach basket to crane for maximum efficiency on the job. Folds into a compact storage box and mounts onto the body for transport.

Personnel Basket Capacity	300 lbs.
Personnel Basket Weight	280 lbs.
Complete Installation (incl. boxes):	400 lbs.



# E-COATING – ENVIRONMENTALLY FRIENDLY RUST PROTECTION

PALFINGER products receive complete electrocoat (E-coat) prime paint coverage. Unlike alternative equipment, our components are E-coated before installation to ensure total paint coverage - even in the most critical areas. You can expect the best rust protection in the industry - period.



## 12 STEP PAINT PROCESS PROVIDES THE ULTIMATE RUST RESISTANCE & IS ENVIRONMENTALLY FRIENDLY

Components are cleaned and pretreated with a phosphate conversion coating to prepare the product for electrocoating. When dipped into a paint bath, direct current is applied between the product and a counter electrode. The electric field attracts paint to the product and deposits it onto the product.

Components are removed from the bath and rinsed to reclaim any unset paint solids. Our E-coat is environmentally-friendly, recyclable, and efficient. The paint is applied to a precise thickness over the entire product, so no paint is wasted. Next, products are transferred to the bake oven and completely cured at a temperature of 375°.

Our products are durable and corrosion resistant thanks to the complete coverage of the E-coat. “Green” initiatives are involved in all activities of PALFINGER, including manufacturing, procurement, new product development.

# PRODUCT RANGE

## TECHNICAL SPECIFICATIONS

MODEL	CAPACITY	RATED LIFTING MOMENT	MAX LIFTING MOMENT	BOOM EXTENSIONS	BOOM LENGTH	WINCH SPEED	STANDARD WEIGHT	CHASSIS SPECIFICATION
PSC 3216 E	4,000 lbs. (1,814 kg)	12,500 ft*lbs. (17 kNm (1.7 m))	14,560 ft*lbs. (19.6 kNm (2 m))	1 Hydraulic + 1 Manual (2 Hydraulic Option)	16 ft. (4.9 m)	21.2 ft./min (6.46 m/min)	650 lbs. (295 kg)	Class 3
PSC 3216 H	4,000 lbs. (1,814 kg)	12,500 ft*lbs. (17 kNm (1.7 m))	14,560 ft*lbs. (19.6 kNm (2 m))	1 Hydraulic + 1 Manual (2 Hydraulic Option)	16 ft. (4.9 m)	29.7 ft./min (9.05 m/min)	630 lbs. (286 kg)	Class 3
PSC 4016 E	4,000 lbs. (1,814 kg)	18,500 ft*lbs. (25.1 kNm (2.6 m))	23,235 ft*lbs. (31.4 kNm (3.2 m))	1 Hydraulic + 1 Manual (2 Hydraulic Option)	16 ft. (4.9 m)	21.2 ft./min (6.46 m/min)	650 lbs. (295 kg)	Class 3
PSC 4016 H	4,000 lbs. (1,814 kg)	18,500 ft*lbs. (25.1 kNm (2.6 m))	23,235 ft*lbs. (31.4 kNm (3.2 m))	1 Hydraulic + 1 Manual (2 Hydraulic Option)	16 ft. (4.9 m)	29.7 ft./min (9.05 m/min)	630 lbs. (286 kg)	Class 3
PSC 4025 E	4,000 lbs. (1,814 kg)	18,500 ft*lbs. (25.1 kNm (2.6 m))	20,585 ft*lbs. (27.9 kNm (2.9 m))	2 Hydraulic	25 ft. (7.6 m)	21.2 ft./min (6.46 m/min)	1,010 lbs. (458 kg)	Class 3
PSC 4025 H	4,000 lbs. (1,814 kg)	18,500 ft*lbs. (25.1 kNm (2.6 m))	20,585 ft*lbs. (27.9 kNm (2.9 m))	2 Hydraulic	25 ft. (7.6 m)	29.7 ft./min (9.05 m/min)	995 lbs. (451 kg)	Class 3
PSC 5025 E	5,000 lbs. (2,268 kg)	32,500 ft*lbs. (44.2 kNm (4.5 m))	36,360 ft*lbs. (49.3 kNm (5 m))	2 Hydraulic	25 ft. (7.6 m)	18.8 ft./min (5.73 m/min)	1,170 lbs. (530 kg)	Class 4
PSC 5025 H	5,000 lbs. (2,268 kg)	32,500 ft*lbs. (44.2 kNm (4.5 m))	36,360 ft*lbs. (49.3 kNm (5 m))	2 Hydraulic	25 ft. (7.6 m)	56 ft./min (17.07 m/min)	1,155 lbs. (525 kg)	Class 4
PSC 6025 E	6,000 lbs. (2,750 kg)	38,500 ft*lbs. (52.2 kNm (5.3 m))	42,800 ft*lbs. (58.0 kNm (5.9 m))	2 Hydraulic	25 ft. (7.6 m)	43.3 ft./min (13.20 m/min)	1,280 lbs. (580 kg)	Class 4
PSC 6025 H	6,000 lbs. (2,750 kg)	38,500 ft*lbs. (52.2 kNm (5.3 m))	42,800 ft*lbs. (58.0 kNm (5.9 m))	2 Hydraulic	25 ft. (7.6 m)	51 ft./min (15.54 m/min)	1,230 lbs. (560 kg)	Class 4
PSC 8029 H	8,000 lbs. (3,650 kg)	43,000 ft*lbs. (58.3 kNm (5.9 m))	49,180 ft*lbs. (66.5 kNm (6.8 m))	2 Hydraulic	29 ft. (8.9 m)	60 ft./min (18.28 m/min)	2,149 lbs. (975 kg)	Class 5
PSC 8600 TEC	8,600 lbs. (3,900 kg)	58,000 ft*lbs. (78.6 kNm (8 m))	62,900 ft*lbs. (85.3 kNm (8.7 m))	2 Hydraulic	31 ft. (8.9 m) 22 ft. (6.7 m) Opt.	72 ft./min (21.9 m/min)	1,860 lbs. (844 kg)	Class 5
PSC 10829 H	10,800 lbs. (4,900 kg)	62,000 ft*lbs. (84.1 kNm (8.6 m))	68,900 ft*lbs. (93.2 kNm (9.5 m))	2 Hydraulic	29 ft. (8.9 m)	60 ft./min (18.28 m/min)	2,407 lbs. (1,092 kg)	Class 6
PSC 12529 H	12,500 lbs. (5,700 kg)	72,000 ft*lbs. (97.6 kNm (10 m))	79,450 ft*lbs. (107.7 kNm (11 m))	2 Hydraulic	29 ft. (8.9 m)	60 ft./min (18.28 m/min)	2,731 lbs. (1,239 kg)	Class 6
PSC 14029 H	14,000 lbs. (6,400 kg)	86,000 ft*lbs. (116.6 kNm (11.9 m))	94,676 ft*lbs. (128.4 kNm (13 m))	2 Hydraulic	29 ft. (8.9 m)	60 ft./min (18.28 m/min)	2,833 lbs. (1,285 kg)	Class 7



Cranes PROUDLY ASSEMBLED in the USA



Bodies PROUDLY MADE in the USA

OSP-PSC8029 | 06/20

Cranes shown in the leaflet are partially optional equipped and do not always correspond to the standard version. All PSC models are subject to change as PALFINGER updates, improves, and technologically advances their cranes and the industry.

OMAHA STANDARD PALFINGER

3501 S. 11th Street | Council Bluffs, IA  
51501-0876 | USA  
T + 1 800 279 2201  
info@palfingerna.com

**PALFINGER.COM**