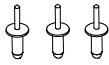


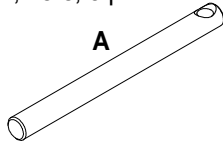
# ILUK-ILU Platform Torsion Bar Anchor & Torsion Bar Block Retainer Modification Instructions

## Aluminum Main & Tip Platform Part Numbers:

A. ML2049230; Anchor Pin, 28mm x 300mm, 1 pc  
B. EK3207; 3/16 X 0.45", Stainless, 18-8, 3 pcs  
Proceed with steps 1 through 5.



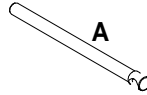
**B**



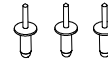
**A**

## Steel Main & Aluminum Tip Platform Part Numbers:

A. ML2069028; Anchor Pin, 28mm x 360mm, 1 pc  
B. EK3207; 3/16 X 0.45", Stainless, 18-8, 3 pcs  
Proceed with steps 6 through 10.



**A**



**B**

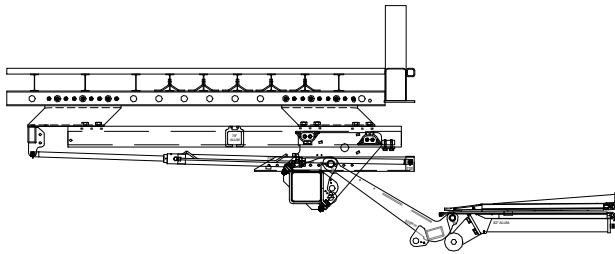
**Time: 15-30 minutes**

**Tools Needed:**

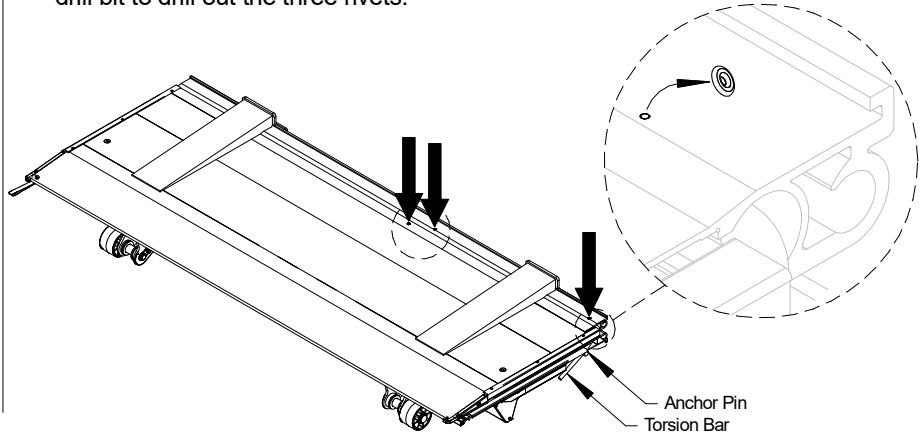
- Drill
- Drill bits, 1/16" & 3/16"
- Rivet Gun
- Silicone Grease

## Steps:

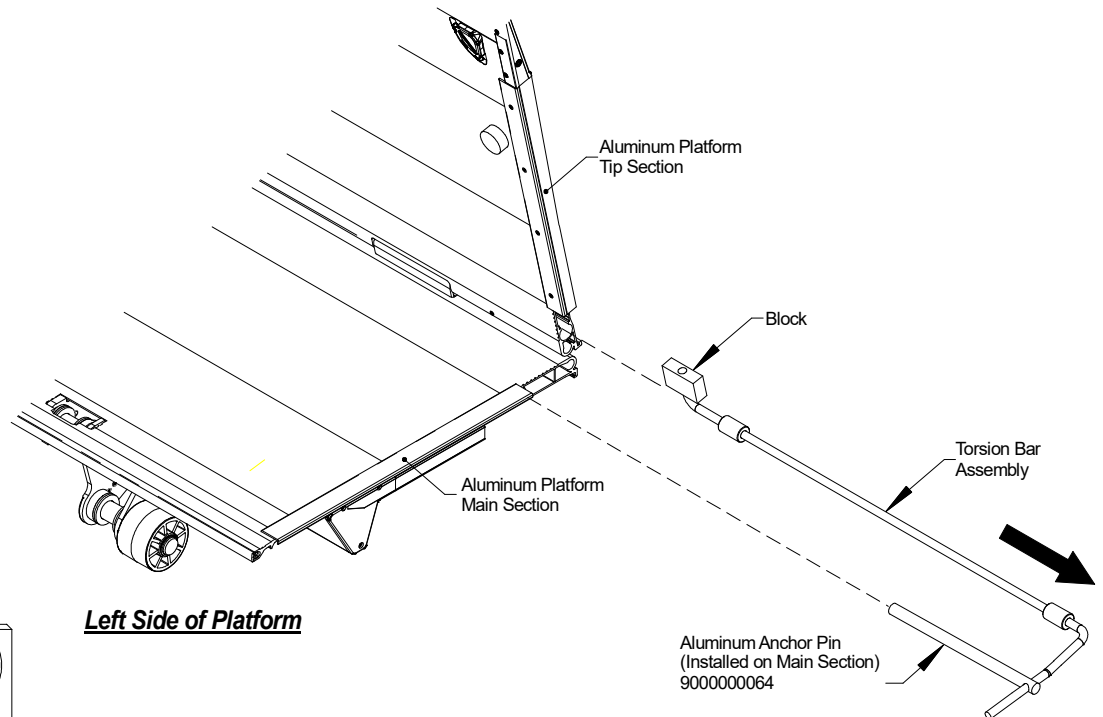
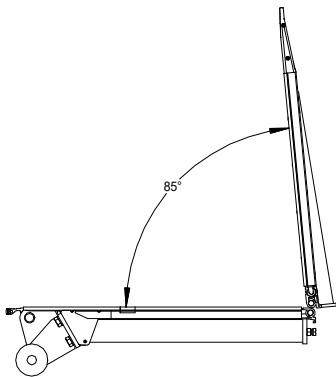
1. Lower the platform and slide out until the platform is exposed completely from under the vehicle.



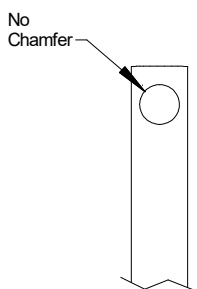
2. Locate the three pre-installed rivets installed on the folded platform. Use a 1/16" drill bit to drill out the three rivets.



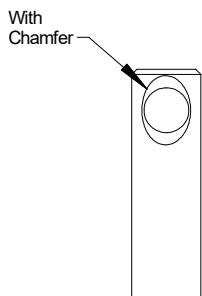
3. Open the tip of the platform approximately 85° to release the tension on the torsion bar assembly. Pull the entire torsion bar assembly out including the aluminum anchor pin and block. Maneuver the bar up and down and side to side if it does not slide out easily or add a degree to the angle of the tip.



## Left Side of Platform



No Chamfer



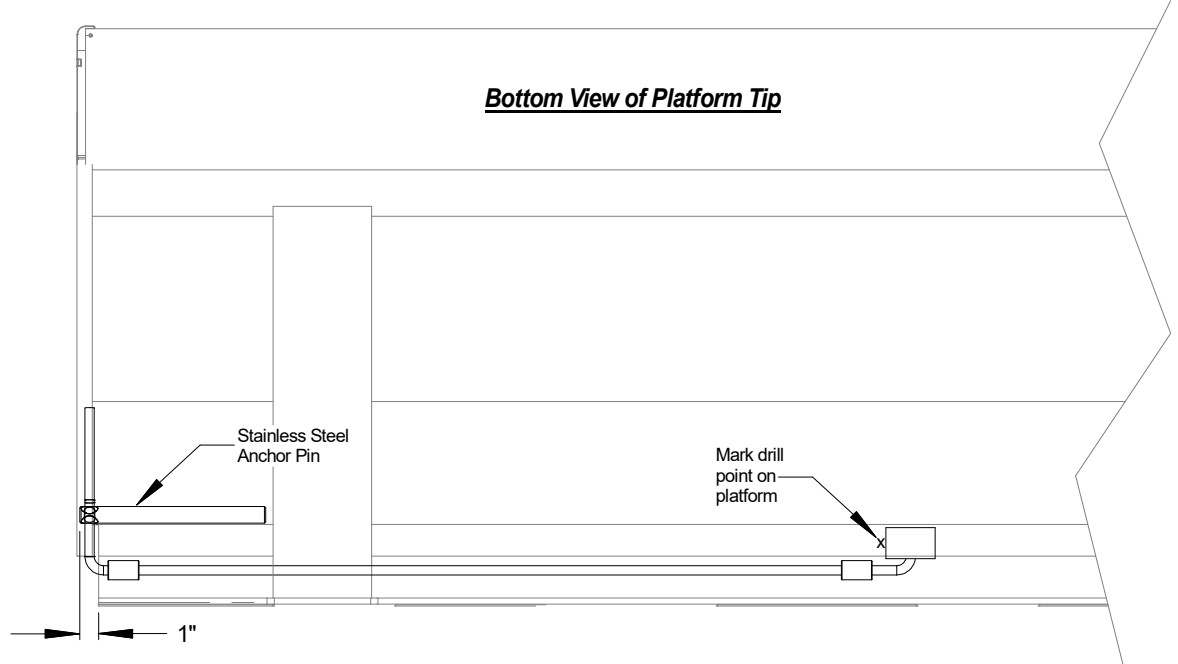
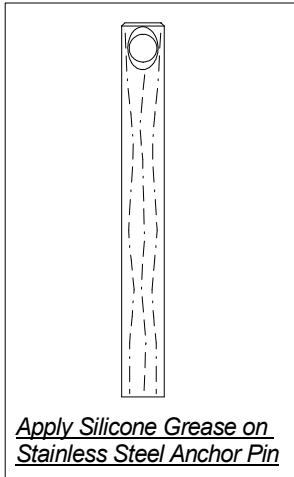
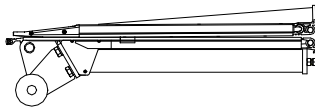
With Chamfer

Aluminum Anchor Pin

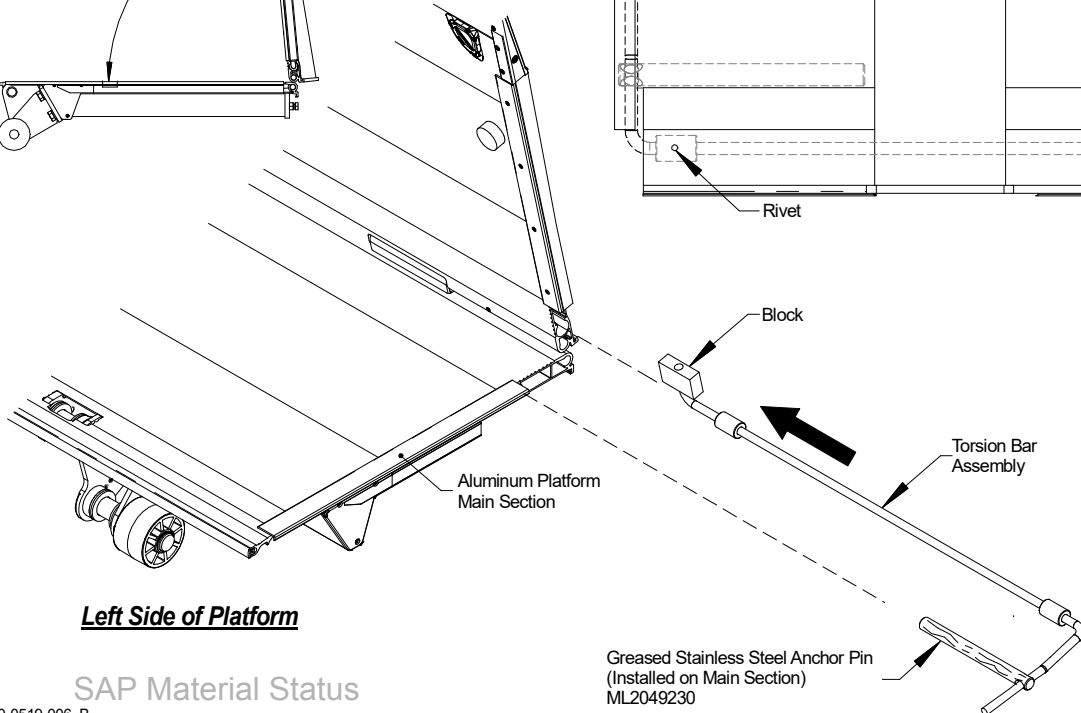
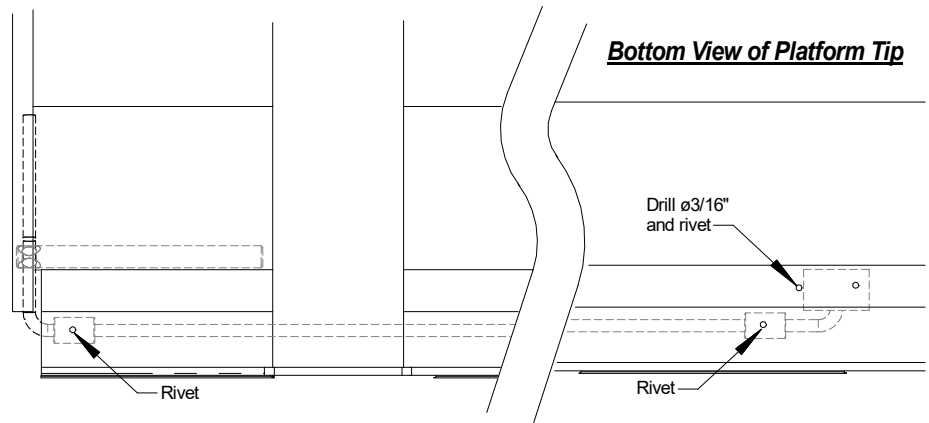
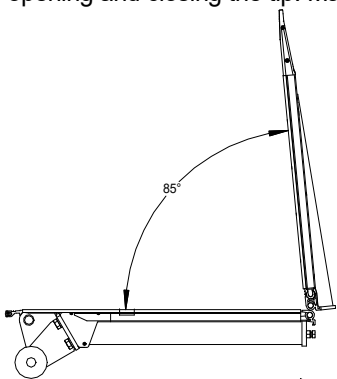
Stainless Steel Anchor Pin

# ILUK-ILU Platform Torsion Bar Anchor and Torsion Bar Block Retainer Modification Instructions

4. Rest the tip of the platform on the main section. Replace the aluminum anchor pin with the stainless steel anchor pin. Overlay the torsion bar assembly over the platform with 1" of anchor pin protruding outside of the aluminum profile. Mark a drill point to the left of the block. The rivet will serve as "stop" to prevent the block from exiting the platform. Lightly grease the anchor pin around the diameter and across the length.



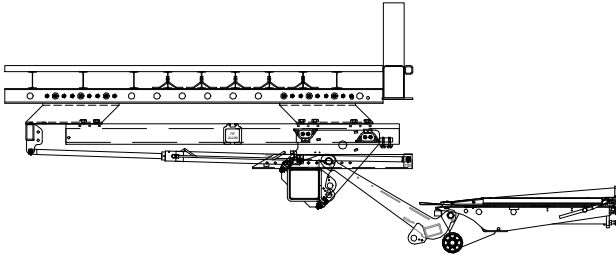
5. Re-open the platform to the 85° position. Insert the entire torsion bar assembly into the platform. Maneuver the torsion bar up and down and side to side if necessary, and insert the greased stainless steel anchor pin into the main section of the platform. Install the retention "stop" rivet next to the block in the 3/16" drilled hole. Add the two remaining rivets to the existing holes to catch the round pads. Test the platform by opening and closing the tip. Make sure it is functioning as intended. Installation is now complete.



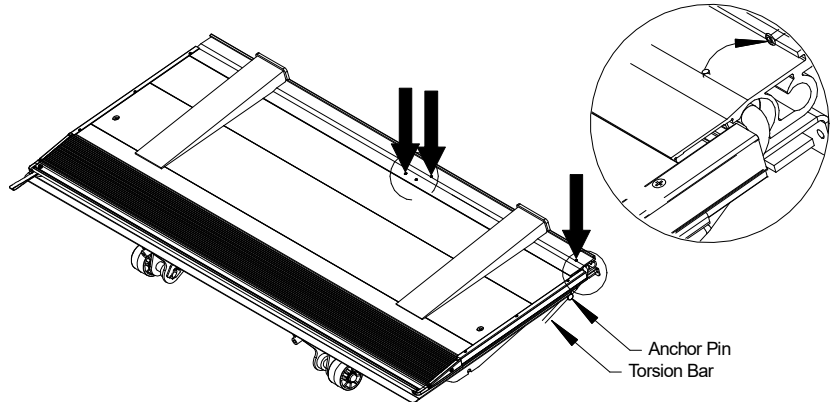
# ILUK-ILU Platform Torsion Bar Anchor & Torsion Bar Block Retainer Modification Instructions

## Steps:

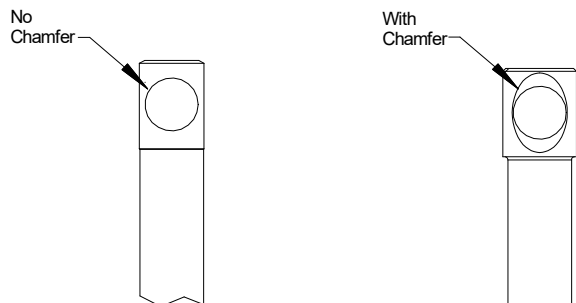
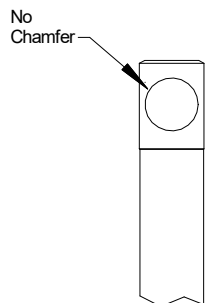
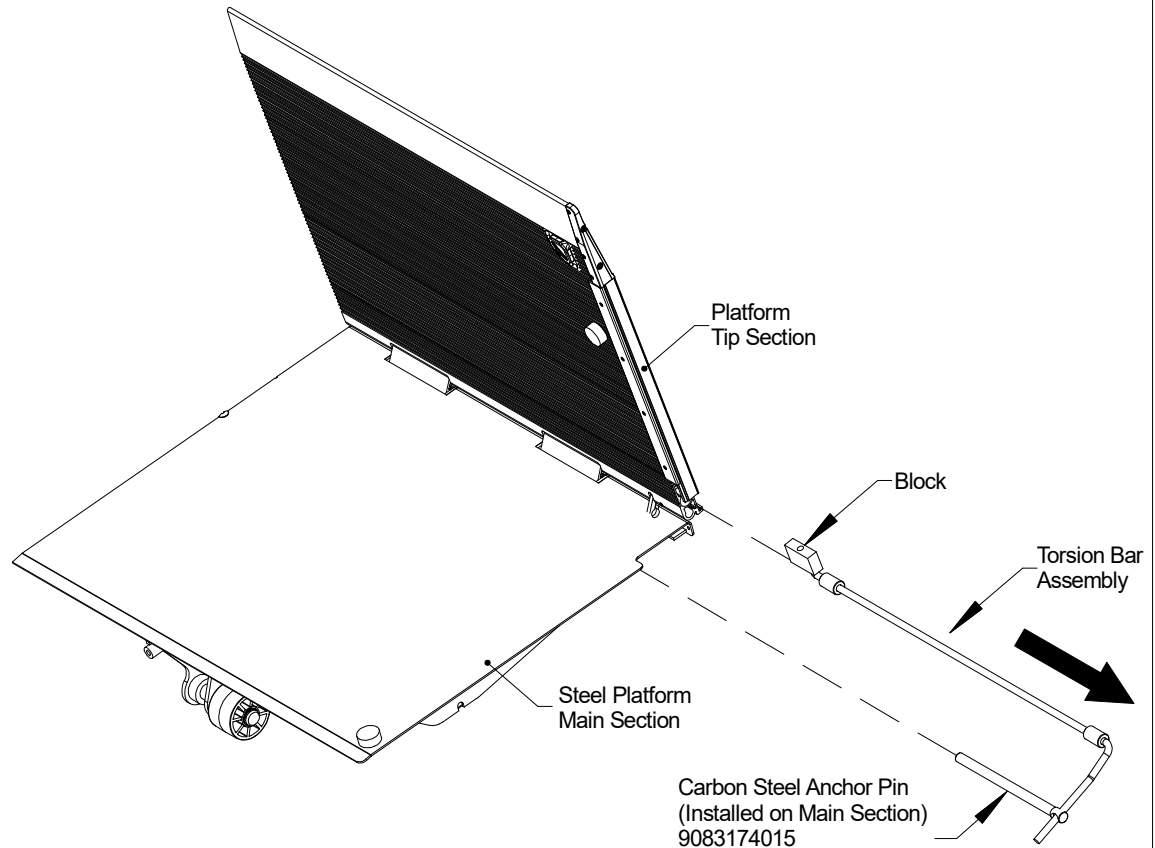
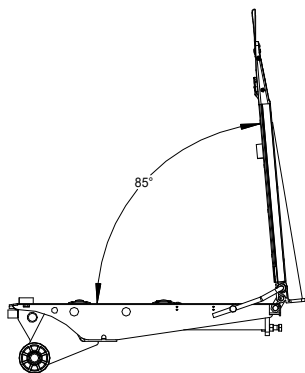
6. Lower the platform and slide out until the platform is exposed completely from under the vehicle.



7. Locate the three pre-installed rivets installed on the folded platform. Use a 1/16" drill bit to drill out the three rivets.



8. Open the tip of the platform approximately 85° to release the tension on the torsion bar assembly. Pull the entire torsion bar assembly out including the carbon steel anchor pin and block. Maneuver the bar up and down and side to side if it does not slide out easily or add a degree to the angle of the tip.

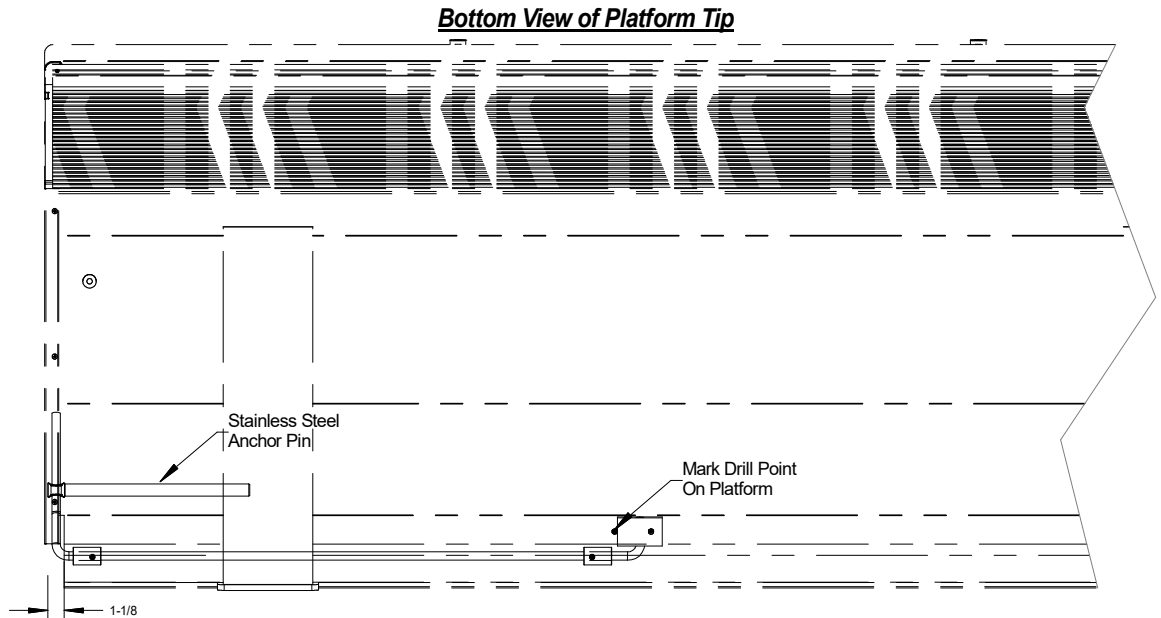
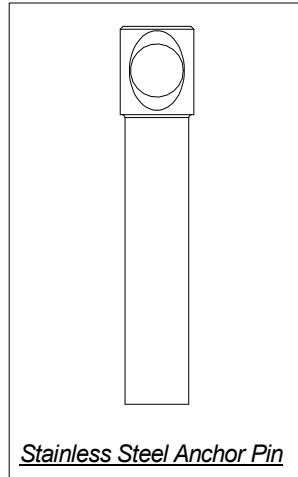
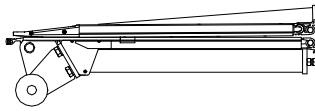


Carbon Steel Anchor Pin

Stainless Steel Anchor Pin

# ILUK-ILU Platform Torsion Bar Anchor & Torsion Bar Block Retainer Modification Instructions

9. Rest the tip of the platform on the main section. Replace the carbon steel anchor pin with the stainless steel anchor pin. Overlay the torsion bar assembly over the platform with 1-1/8" of anchor pin protruding outside of the aluminum profile. Mark a drill point to the left of the block. The rivet will serve as "stop" to prevent the block from exiting the platform.



10. Re-open the platform to the 85° position. Insert the entire torsion bar assembly into the platform. Maneuver the torsion bar up and down and side to side if necessary, and insert the stainless steel anchor pin into the main section of the platform. Install the retention "stop" rivet next to the block in the 3/16" drilled hole. Add the two remaining rivets to the existing holes to catch the round pads. Test the platform by opening and closing the tip. Make sure it is functioning as intended. Installation is now complete.

