

**PALFINGER**

# **PBO 5548 IM BUCKET TRUCK**

Performance and speed to get the job done.

**LIFETIME EXCELLENCE**



[PALFINGER.COM](http://PALFINGER.COM)

# INNOVATIONS

The new PBO 5548 IM Bucket Truck by PALFINGER provides smooth, safe boom placement - relieving operator fatigue for long days in the bucket working on power lines. Customer specified design improvements allows for ease of service, a lower cost of ownership, enhanced safety feature and performance. The PBO 5548 IM is proudly made in the USA and backed by the global innovations and technologies of PALFINGER.

## INDUSTRY LEADING WORK POSITION SIDE REACH

Horizontal reach of 44'.  
Vertical reach of up to 62' working height with elevator option.  
Increased lifting capacities throughout range of motion:

- Jib working position - 900 lb.
- 2,000 lb. lift angle - 60°

## IMPROVED BOOM FUNCTIONALITY

Improved boom function speeds.  
Smoother variable boom control functions.  
Booms designed to minimize bounce.

## WORK-READY SOLUTION

Complete turn-key, work-ready solution.  
Winch line offers the best lifting capacity on the market.



# AERIAL HIGHLIGHTS



## ELEVATOR DESIGN

Provides a smoother ride and improved hose containment, plus it decreases warranty costs.



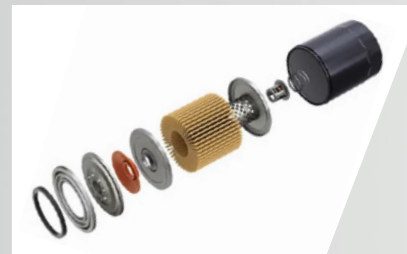
## ADDITIONAL MAINTENANCE ACCESS POINTS IN BOTH UPPER & LOWER BOOM

Maximize performance and uptime with easy access to hoses for inspections and maintenance.



## MILITARY GRADE PLASTIC COVERS

Improved protection and rigidity when encountering trees and other overhead obstructions - reducing downtime.



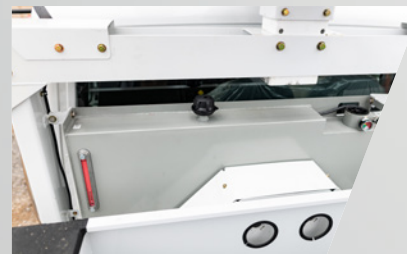
## HIGH PRESSURE OIL FILTRATION

PALFINGER state-of-the-art high pressure filter improves oil cleanliness and reduces valve replacement.



## OVERSTOP PROTECTION ON THE UPPER & LOWER BOOMS

Automatically reduces boom speed into the cradle maximizing equipment life.



## HYDRAULIC TANK LOCATION MOVED OUTSIDE OF THE LOAD AREA

Frees up valuable working space and provides more storage for tools and materials.



## REDUCED CORROSION ON ALL PINS & BOSSES

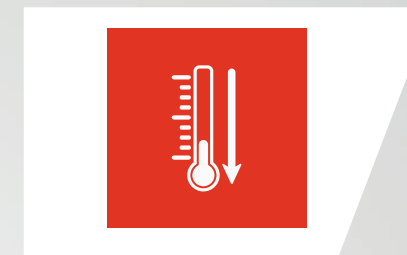
Utilizing proprietary components on all pivot points, composite bushings, and trademarked coating processes on pins result in increased durability, reduced service time and lower costs.

# SAFETY HIGHLIGHTS



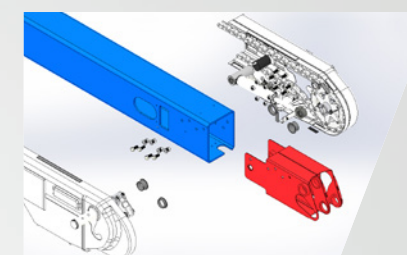
## BUCKET PIN TRIPLE-REDUNDANT FASTENING TO THE BOOM

Increases safety attachment between bucket and boom.



## VERY LOW HEAT GENERATION WHILE IDLING

Advanced hydraulic system reduces horsepower loss and heat generation. Temperature control extends component life.



## BONDED BOOM TIP

Fiberglass bonded to steel improves safety during operation.

# ULTIMATE CORROSION PROTECTION\*

## 12 STEP E-COAT PROCESS

PALFINGER'S 12-step E-Coat process cleans and coats the steel components of the bucket truck body with the best anti-corrosion primer process available. Unlike a traditional wand-wash and primer application, electrocoating ensures complete and consistent coverage.

### PRETREATMENT

Every bucket truck body is dipped into a series of tanks that cleans, conditions and forms microscopic crystals on the surface—increasing corrosion resistance and paint adhesion and toughness. A final seal rinse applies a coating around the crystals.

### E-COAT AND CURING

The body is dipped into a paint bath where direct current is applied between the product and a counter electrode. A 375° oversized oven cures and hardens the E-Coat primer, providing a durable finish before the top coat is applied.

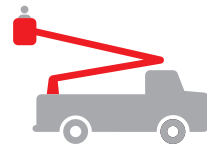
### PAINT AND COATINGS

Tough and long lasting, our exterior coating protects your fleet from severe environments and internally against abrasions from tools and materials. Exterior coatings cover compartment tops, load space floor, sidewalls, tail shelf and body front for added protection. Coatings also improve visibility inside the compartments.



\* Corrosion protection is an option for the service body only.

# FEATURES

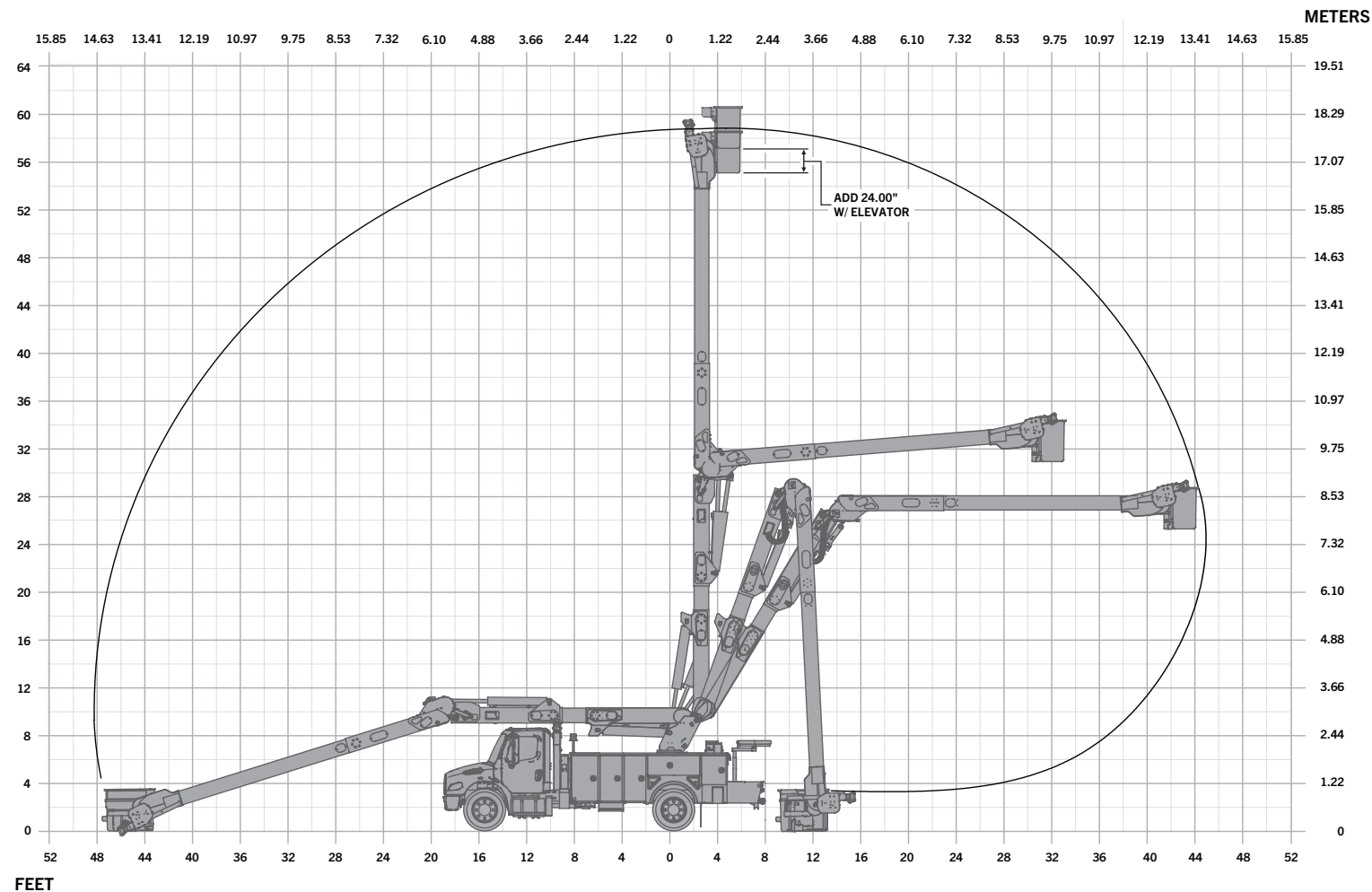


## STANDARD

90° Bucket Rotator	All Pins Turn on Replaceable Bushings
Single Handle Upper Control	Variable Displacement Piston Pump (Up to 22 gpm)
24" x 48" Basket	Automatic Upper Boom Stow
2 Sets of Outriggers	Continuous Rotation
Emergency Hydraulic Power (12V DC)	Hydraulic Bucket Tilt
Dual Hydraulic Tool Circuit at Upper Controls	Full Pressure Hydraulic System
Hydraulic Extend Jib for Material Handler	Outrigger Boom Interlock
Over-Stow Protection – Upper Boom and Lower Boom	
Stationary Worm Gear Motor for Turret Rotation with Manual Override Capability	

## OPTIONS

24" Bucket Elevator	Engine Start/Stop at Basket
69 kV Rating – Category B	Pilot Operated Hydraulic System
Automatic Engine Throttle	



## GENERAL SPECIFICATIONS



# PBO 5548 IM BUCKET TRUCK

DESCRIPTION	MEASUREMENT
Height to Bottom of Bucket*	55'
Working Height*	60'
Side Reach, Over-Center	48' 7"
Side Reach, Non-Over-Center	44' 1"
Rotation	360° Continuous
Lower Boom Articulation	0° → 121°
Upper Boom Travel	-8° → 195°
Stow Height*	11' 9"
Rated Bucket Capacity	Up to 800 lbs
Maximum System Pressure	3,000 psi
Hydraulic System Flow (Piston Pump)	Up to 22 gpm
Jib Length	5'
Winch Capacity	Up to 2,000 lbs

\*Based on a 40" chassis frame height

## LIFETIME EXCELLENCE

### SERVICE & SUPPORT

Our nationwide service centers and 100+ mobile field service fleet are always close by to maximize your uptime. Our service technicians are specially trained to work on your bucket truck and are equipped to perform preventative maintenance, repairs, and inspections directly on site or at one of our service locations.

### WARRANTY

When you choose PALFINGER you get more than advanced technology—you partner with a trusted brand that's committed to building your business. Our bucket trucks offer the most comprehensive warranty policy in the business. We back it with no-hassle warranty claims, plus quick turn-around from friendly service agents who understand your business.



NAM\_PBO5548IM\_EN\_06/21

PALFINGER reserves the right to modify, change or revise published specifications and furnish products so altered without prior notice.

**PALFINGER NORTH AMERICA, LLC**  
 341 NW 122nd | OKLAHOMA CITY, OK  
 73114 | USA  
 T + 1 888 748 3841  
 F + 1 405 755 6829

[PALFINGER.COM](http://PALFINGER.COM)