

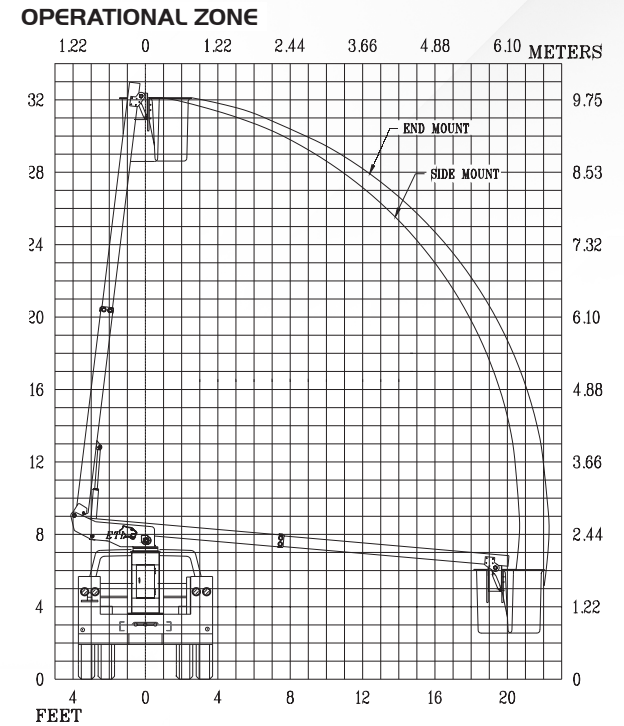
PALFINGER

ETT 29 SNT

TELESCOPIC — NON-INSULATED



ETT 29 SNT



With a 40' working height, 30' side reach, a 24" x 30" bucket, and continuous rotation, the ETT 29 SNT delivers the maneuverability and reach you expect from a PALFINGER bucket truck. Single-handle control, basket and turret full-pressure hydraulic controls with complete feathering capabilities, an extended shear ball rotation shaft, replaceable pin bushings, an emergency lowering valve, and engine start/stop at the bucket are powerful standard features.

GENERAL SPECS:	Height to Bottom of Bucket	Working Height	Side Reach End Mount	Stowed Height	Rated Bucket Capacity					
	Side Mount (Standard): 28' 7" End Mount: 29'	Side Mount (Standard): 33' 7" End Mount: 34'	Side Mount (Standard): 20' 9" End Mount: 22' 9"	9' 6"	350 lbs.					
HYDRAULIC SYSTEM:	Operating Pressure (min)	Operating Volume	MINIMUM VEHICLE REQUIREMENTS:	GVWR (dual rear wheels)	GAWR (front)	GAWR (rear)	C.A.	ANSI		
	2,000 psi	2.5 gpm		11,000 lbs.	4,000 lbs.	11,000 lbs.	60 in.	Non-Insulated		
OPTIONS:	Emergency hydraulic power (12VDC)	Electric tool circuit	Bucket liner	Bucket cover	Air line to the bucket	Oversize bucket — 24"x30"x42"	End mount bucket			

PALFINGER North America, LLC.

341 Northwest 122nd St | Oklahoma City | Oklahoma | 73114 | +1 888 748 384 | PALFINGER.COM

*All specifications are based on the 40" frame height and subject to change without notice. Bucket trucks shown in this brochure are partially optional equipped and do not always correspond to the standard version. Country-specific regulations must be observed. Dimensions may vary. Subject to technical changes, errors and translation mistakes.