

PK 40001 EL PERFORMANCE

**THE CONTINUOUS
SLEWING SYSTEM GIVES
THE CRANE MAXIMUM
MOBILITY**

LIFETIME EXCELLENCE



LIFETIME EXCELLENCE

PALFINGER loader cranes are convincing due to their superior life-cycle performance. They are the most economical and also the most reliable over the entire product life. From solution finding to resale.

- **Better solutions**
- **Better efficiency**
- **Better ergonomics**
- **Higher availability**
- **More reliability**
- **Better ecology**
- **Higher serviceability**
- **Higher value retention**



OPTIMAL OUTREACH IN DAILY DUTY

At joinery, roofing and assembly firms and in many other sectors where long arm lengths and rapid movements are required the PK 40001 EL Performance can handle any job efficiently and cost-effectively.

An endless slewing mechanism with two slewing gears and the POWER LINK PLUS endow the crane with maximum mobility. The winch with a lifting capacity of up to 3.5 tonnes impresses with its high working speed.





MORE FLEXIBILITY THROUGH THE POWER LINK PLUS

9 Highlights



Power Link Plus

High variety of uses

This knuckle boom specially developed by PALFINGER which can be angled upwards by 8 degrees stands out by virtue of excellent movement geometry. Even in the tightest spaces difficult crane jobs can be carried out without any problems.

Internally routed oil passages

Maximum protection thanks to compact design

The internally routed oil passages make it possible to have a compact design for the extension system and ensure perfect protection from damage.



Outriggers

For optimum stability

The PK 40001 EL Performance comes without outriggers. This means that – depending on the mounting concept – the ideal outrigger solution can be achieved with additional, customised outriggers.

Cable winch

The perfect complement

The cable winch mounted on the side of the crane boom stands out by virtue of its low overall height, a lifting capacity of 2.75 to 3.5 tonnes and the cable speed of 70 m/min.



High Speed Extension

For efficient assignments

The High Speed Extension speeds up the extension boom system. Crane works faster and more efficiently.



Hose equipment for accessories

Versatile and user-friendly

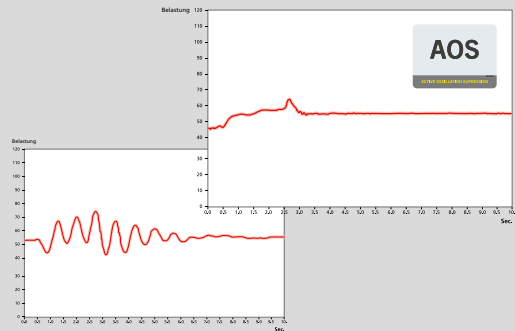
With this option you can provide the oil supply for boom tip accessories. The hoses are routed in compact troughs and plastic link chains. Optimal protection is achieved.



Extendable counterweight

Optimum balance

If necessary, a counterweight with 2.3 or 4.2 tonnes can be installed to increase stability.



AOS

Maximum precision and safety

The active oscillation suppression system prevents “post-oscillation” in the event of rapid braking or load changes. The stress peaks on the extension boom system are reduced and material fatigue and wear are minimised. This increases the resale value.



Continuous slewing system

Unrestricted movement

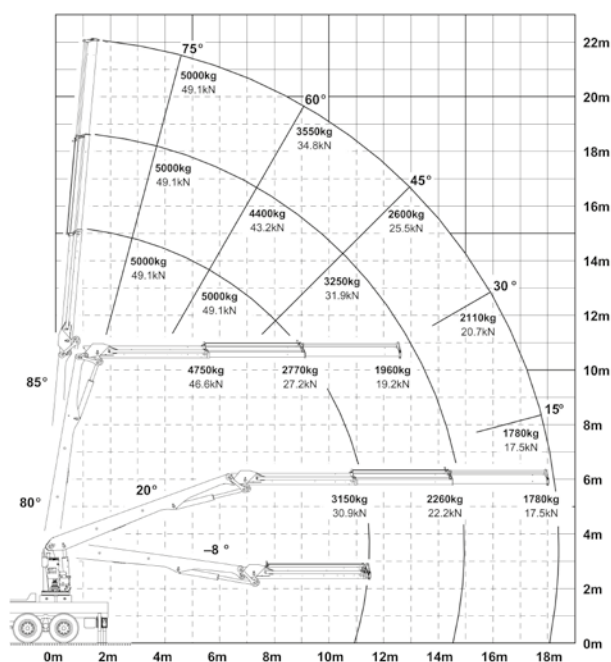
More efficient in operation due to faster loading cycles, since the crane can be slewed over a shorter distance. The crane works more efficiently and faster.

PK 40001 EL

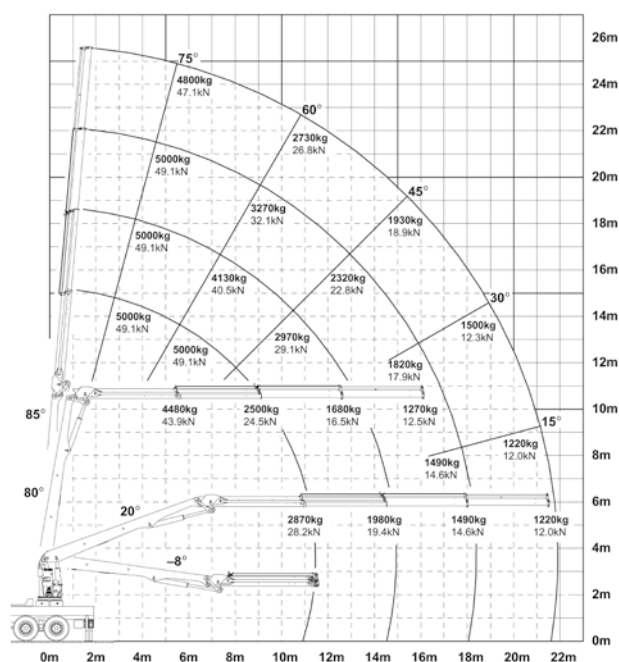
PERFORMANCE

Impressive technology to your advantage.

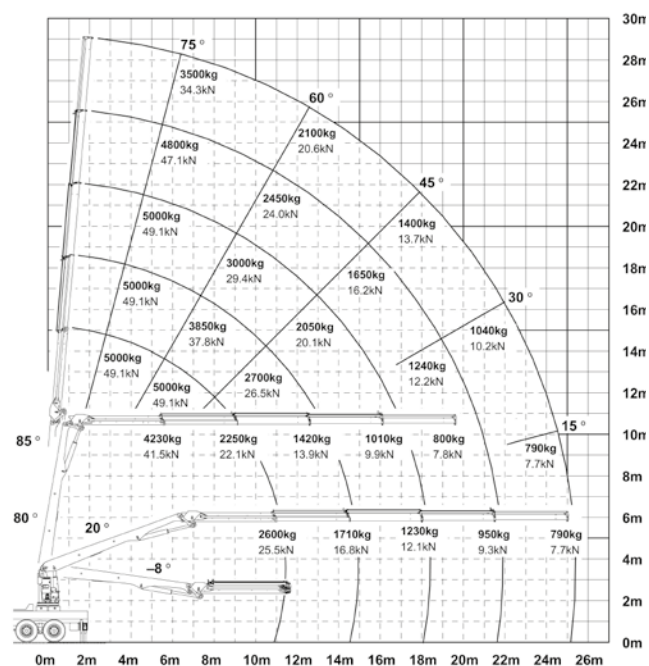
A



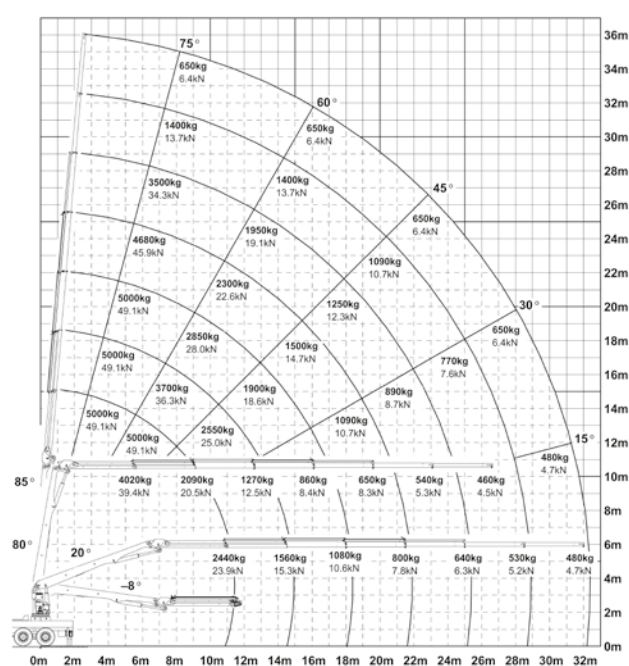
B



C



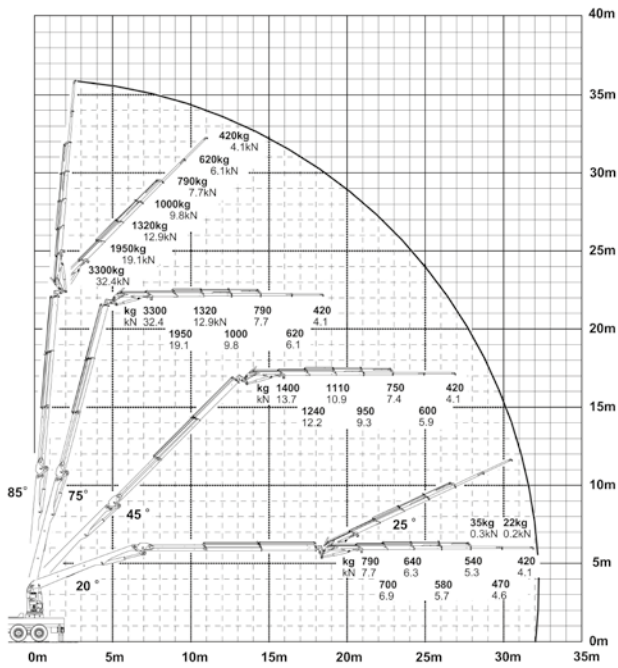
CV2



The outreaches stated are with a boom angle of 20° and are therefore not the maximum.

Lifting capacities

A PJ080C



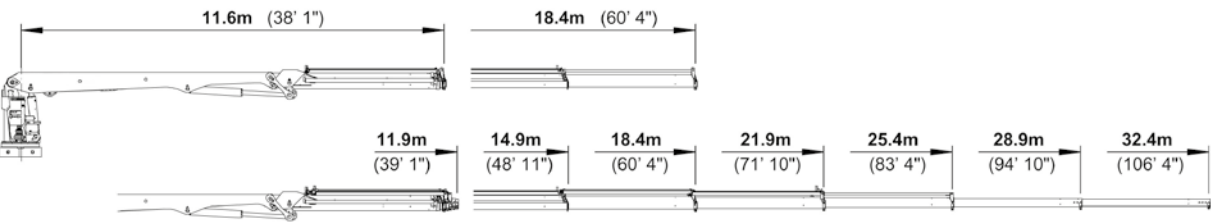
| max. | | 5000 kg | 11020 lbs | A |
|--------|---------|---------|-----------|---|
| 11.2 m | 36' 9" | 3150 kg | 6940 lbs | |
| 14.6 m | 47' 11" | 2260 kg | 4980 lbs | |
| 18.0 m | 59' 1" | 1780 kg | 3920 lbs | |

| max. | | 5000 kg | 11020 lbs | B |
|---------|--------|---------|-----------|---|
| 11.2 m | 36' 9" | 2870 kg | 6330 lbs | |
| 14.7 m | 48' 3" | 1980 kg | 4370 lbs | |
| 18.1 m | 59' 5" | 1490 kg | 3280 lbs | |
| 21.5 m | 70' 6" | 1220 kg | 2690 lbs | |
| 25.0 m* | 82' 0" | 840 kg | 1850 lbs | |
| 28.5 m* | 93' 6" | 720 kg | 1590 lbs | |

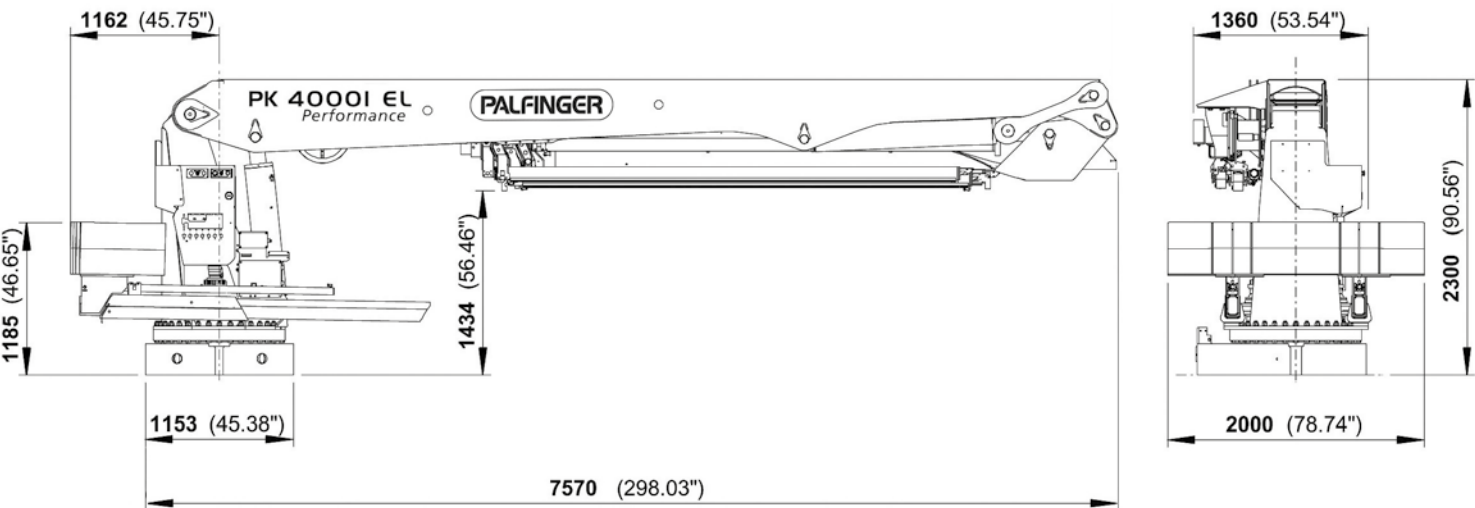
| max. | | 5000 kg | 11020 lbs | C |
|---------|----------|---------|-----------|---|
| 11.3 m | 37' 1" | 2600 kg | 5730 lbs | |
| 14.7 m | 48' 3" | 1710 kg | 3770 lbs | |
| 18.2 m | 59' 9" | 1230 kg | 2710 lbs | |
| 21.6 m | 70' 10" | 950 kg | 2090 lbs | |
| 25.0 m | 82' 0" | 790 kg | 1740 lbs | |
| 28.5 m* | 93' 6" | 530 kg | 1170 lbs | |
| 32.0 m* | 104' 12" | 480 kg | 1060 lbs | |

PERFECT DIMENSIONS

EXTENSION BOOM VARIATIONS



DIMENSIONS



Technical specifications

EN 12999 H1-B3

PK 40001 EL

| | | |
|---|-------------------------------|--------------------------------------|
| Max. lifting moment | 39.2 mt/385.0 kNm | 283860 ft.lbs |
| Max. lifting capacity | 5000 kg/49.1 kN | 11020 lbs |
| Max. hydraulic outreach | 25.4 m | 83' 4" |
| Max. manual outreach | 32.4 m | 106' 4" |
| Slewing angle | endless | |
| Slewing torque | 7.0 mt/68.7 kNm | 50650 ft.lbs |
| Width folded | 1.36 m | 4' 6" |
| Max. operating pressure | 330 bar | 4785 psi |
| Recommended pump capacity with RC- and LS-system | from 80 l/min to 100 l/min | 21.1 US gal./min 26.4 US gal./min |
| Dead weight (std.) | 3500 kg | 7720 lbs |
| Counterweight standard crane (optional) | 2300 kg 4200 kg | 5070 lbs 9260 lbs |

Advanced Package

- Oil cooler mounted
- Electronic HPLS
- Capacity display on control console
- PALFINGER radio control
- PALTRONIC 50
- Functional Design



KP-PK40001ELM2+EN

Cranes shown in the leaflet are partially optional equipped and do not always correspond to the standard version. Country-specific regulations must be observed. Dimensions may vary. Subject to technical changes, errors and translation mistakes.