

PK 28.502 TEC 5 | PK 30.002 TEC 7

HIGH-TECH CRANES IN THE 30 METRE TONNE CLASS

LIFETIME EXCELLENCE



MORE THAN STANDARD

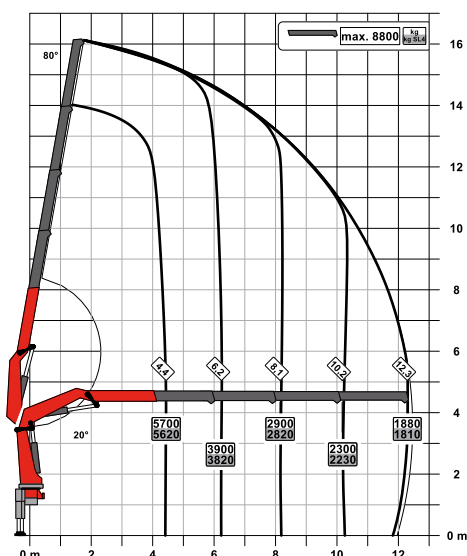
The PK 30.002 TEC 7 and PK 28.502 TEC 5 combine cutting-edge technology at the highest level. The TEC models from the 30-meter ton segment are not only an aesthetic eye-catcher, but also incredibly powerful thanks to the drop-shaped P-profile. The endless slewing gear gives them almost unlimited freedom of movement, enabling the crane operator to work more efficiently and, above all, faster. Together with the numerous optionally available assistance and comfort systems of the TEC series, these models meet each of our customers' individual requirements



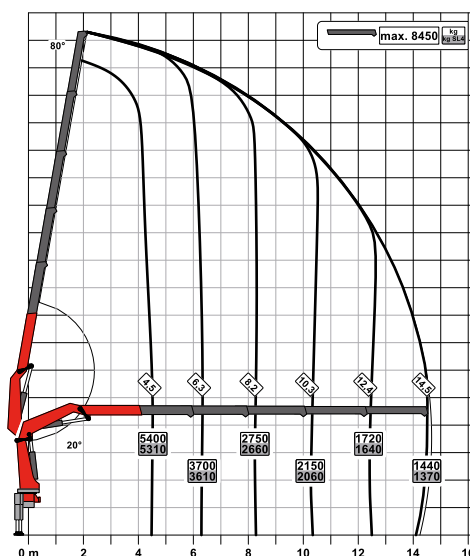


LIFTING CAPACITY DIAGRAMS

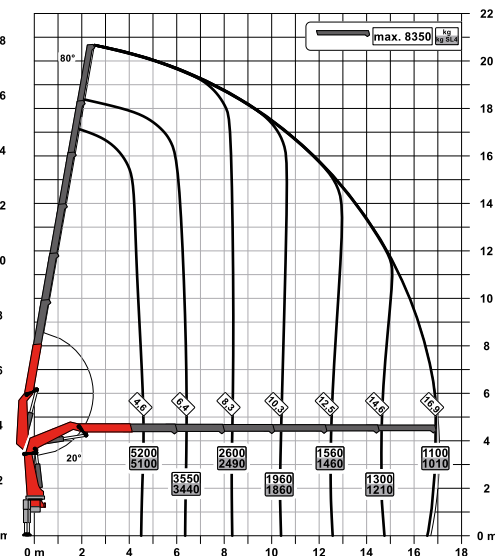
C



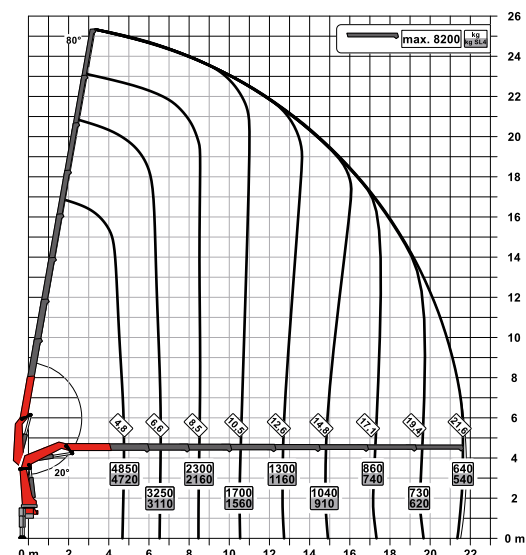
D



E



G



MODEL LINE TEC 5

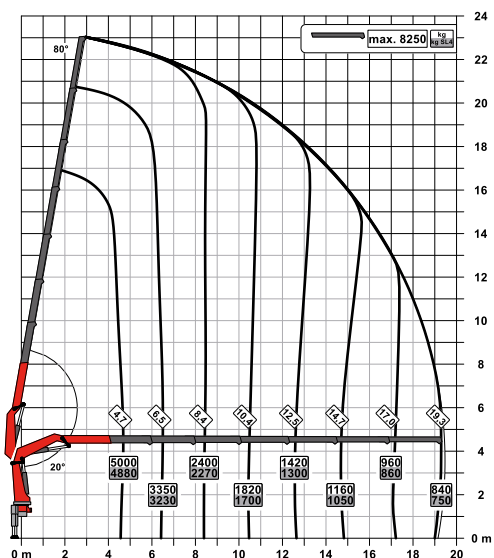
- Power Link Plus
- Paltronic
- S-HPLS
- Scanreco P3
- Soft Stop
- Optional:
 - HPSC-Plus LOAD
 - AOS
 - SRC
 - PJ075 with DPS-P
 - PJ090 with DPS-P
 - Rope winch 2,5t

TECHNICAL SPECIFICATIONS

EN 12999 HC1 HD4/S2

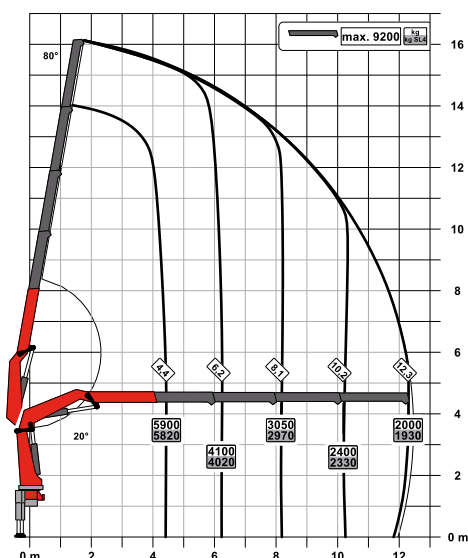
Max. lifting moment	26.8 mt/263.0 kNm	193,960 ft.lb
Max. lifting capacity	10000 kg/98.1 kN	22050 lb
Max. hydraulic outreach	21.8 m	71' 6"
Max. outreach (with fly jib)	29.9 m	98' 1"
Slewing angle	endless	
Slewing torque	2.7 mt/26.5 kNm	19,540 ft.lb
Stabiliser spread	5.6 m	18' 4"
Fitting space required (std.)	1.13 m	3' 8"
Width folded	2.55 m	8' 4"
Max. operating pressure	370 bar	5,365 psi
Recommended pump capacity	from 90 l/min to 110 l/min	23.8 US gpm 29.1 US gpm
Dead weight (std.)	2860 kg	6,305 lb

F

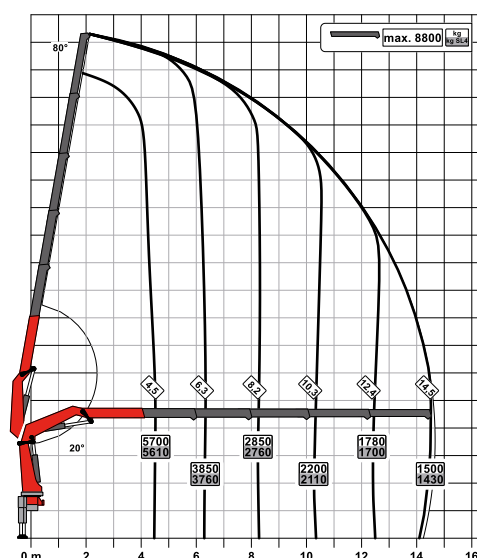


LIFTING CAPACITY DIAGRAMS

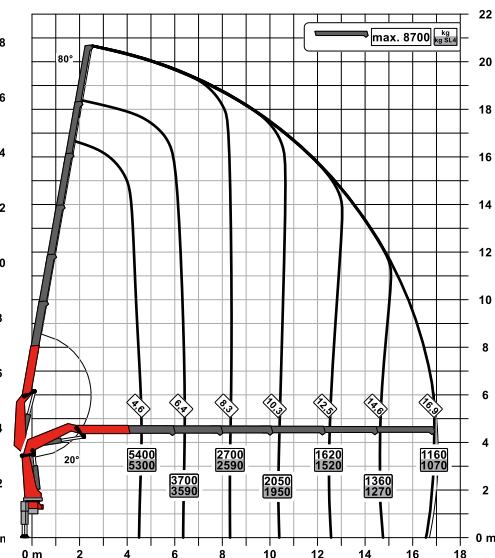
C



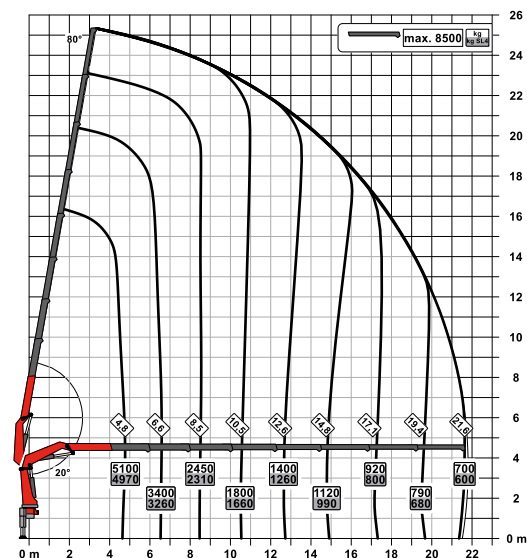
D



E



G



MODEL LINE TEC 7

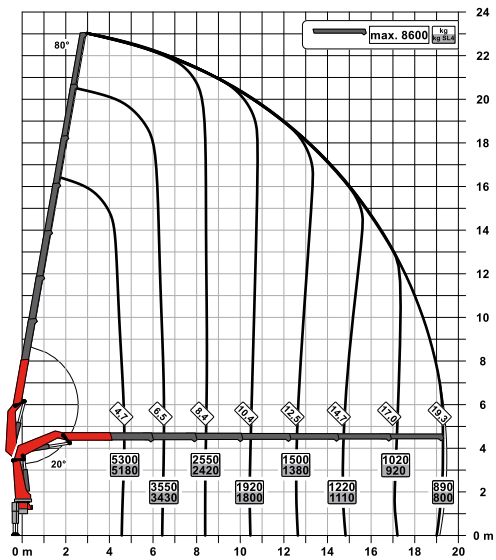
- Power Link Plus
- Paltronic
- S-HPLS
- PALcom P7
- Soft Stop
- Optional:
 - HPSC-Plus LOAD / GEOM / FSTAB
 - P-Fold
 - AOS
 - RTC
 - SRC
 - PJ075 with DPS-C
 - PJ090 with DPS-C
 - Rope Winch 2.5 t

TECHNICAL SPECIFICATIONS

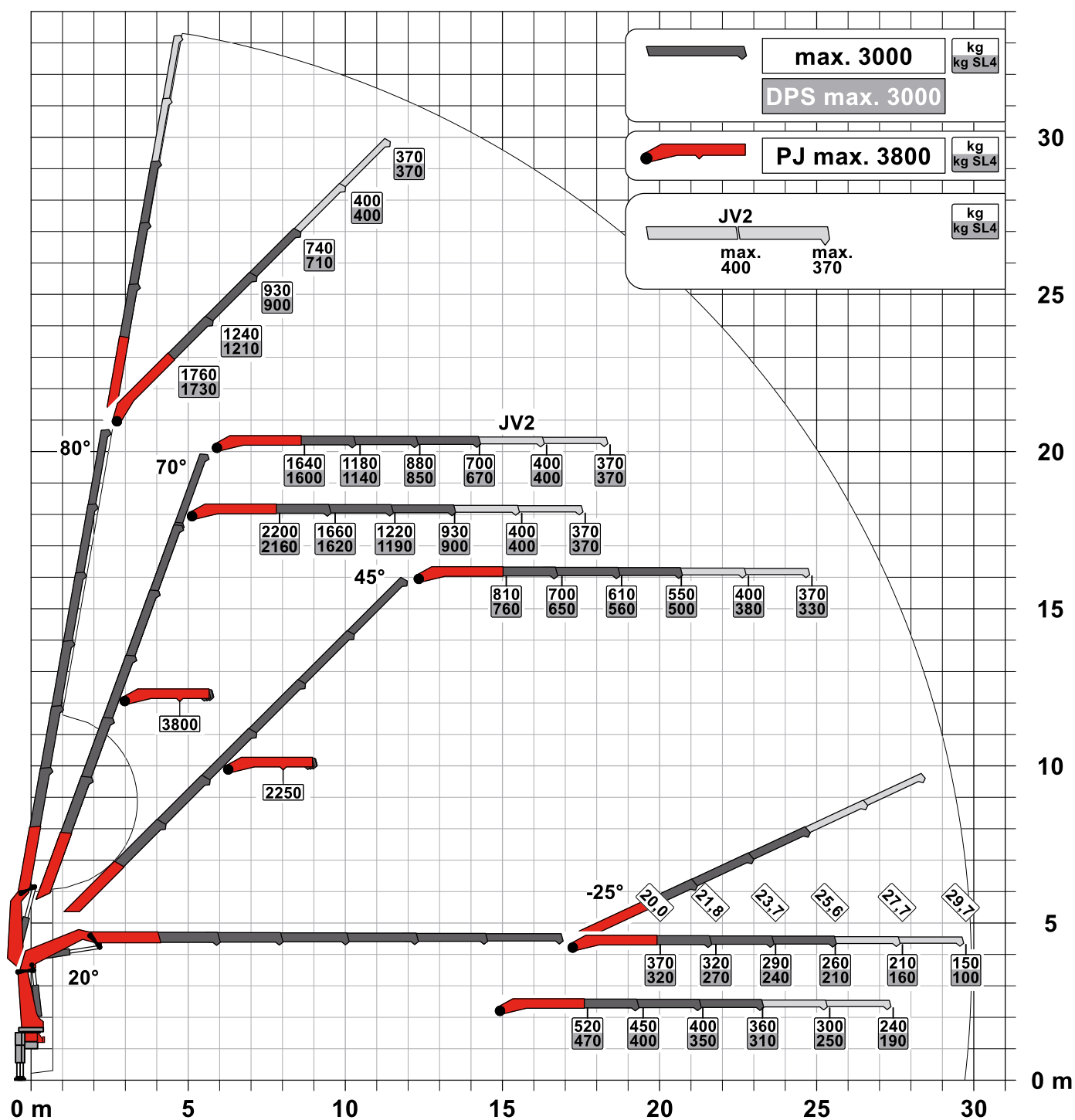
EN 12999 HC1 HD5/S2

Max. lifting moment	28.1 mt/275.5 kNm	203,180 ft.lb
Max. lifting capacity	10000 kg/98.1 kN	22050 lb
Max. hydraulic outreach	21.8 m	71' 6"
Max. outreach (with fly jib)	29.9 m	98' 1"
Slewing angle	endless	
Slewing torque	2.7 mt/26.5 kNm	19,540 ft.lb
Stabiliser spread	5.6 m	18' 4"
Fitting space required (std.)	1.13 m	3' 8"
Width folded	2.55 m	8' 4"
Max. operating pressure	385 bar	5,585 psi
Recommended pump capacity	from 90 l/min to 110 l/min	23.8 US gpm 29.1 US gpm
Dead weight (std.)	2860 kg	6,305 lb

F



IMPRESSIVE STRENGTH WITH A FLY-JIB AND DPS-C



FULL LIFTING POWER WITH THE DUAL POWER SYSTEM (DPS)

The innovative Dual Power System from PALFINGER – DPS-Plus for TEC 5 or DPS-C for TEC 7 – significantly increases the lifting power of the fly jib. The system's strengths are especially evident with long outreaches, extending the crane's area of application.

Continuous power

While DPS-Plus recognizes two positions of the final crane extension boom and so uses two pressure ranges, DPS-C can continuously select the optimum pressure range for the relevant position. This is possible thanks to the length measurement system, which detects the exact positions of the crane and fly-jib extension booms. DPS-C allows the lifting power to be adjusted whatever the position, which means that it also optimizes lifting power when the crane boom and fly jib are fully extended.



P-PROFILE

Rigid and light

The tear-drop-shaped P-profile is the hallmark of the TEC crane. And it's thanks to this unusual profile shape that the boom system has both a lightweight design and exceptional torsional strength. The entire extension system is also low-maintenance.



P-FOLD*

Perfect set-up by fingertip control

The new assistance system makes folding and unfolding an easy job for the crane operator. This significantly increases operator comfort and prevents costly damage.



HPSC-Plus*

Maximum utilization of the working range

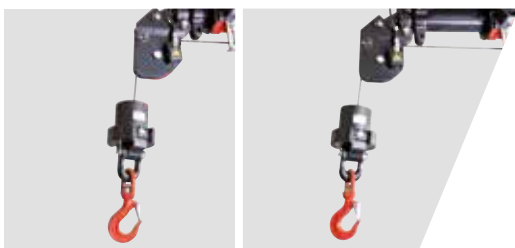
The modular system HPSC-Plus offers three modules expanding HPSC. Thanks to load detection, length measurement system or stabilizer force detection, lifting capacity can be maximized.



CONTINUOUS SLEWING SYSTEM

Unrestricted movement

More efficient in operation due to faster loading cycles, since the crane can be slewed over a shorter distance. The crane works more efficiently and faster.



SRC and RTC*

More comfort in rope winch operation

SRC (Synchronised Rope Control) maintains a constant distance between the pulley head and the hook block, while RTC (Rope Tension Control) is automatically controlling the rope tension. Two systems, which are particularly valuable in terms of operator friendliness and efficiency of operations.



MEXT and WEIGH*

Systems for easy handling

MEXT includes mechanical extensions into the overload protection while WEIGH allows to weigh loads. The result: lower effort for the operator in daily working tasks.



FUNCTIONAL DESIGN

Practical and attractive

Robust plastic covers protect crane parts against dirt and damage. Improved looks and increased operational comfort – throughout the entire lifetime.

