

PK 23500 Performance

BUILT FOR THE TOUGHEST CONDITIONS

LIFETIME EXCELLENCE

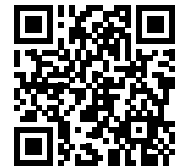


VERSATILE AND RELIABLE IN ANY SITUATION

The Loader Crane Model PK 23500 and the Renault K 380 P6X4 HEAVY.34 E3 become one unit in PALFINGER's Mounting Competence Center. Able to work under the toughest conditions at your site, this ready built solution provides the optimal amalgamation between the crane and truck. A great deal of attention has gone into the development as details are critical to PALFINGER to ensure your success.

The high-quality turnkey solution is particularly suitable in the following segments

- **Construction Industry**
- **Industry & Installation**
- **Material Transport**



[youtubevideo.link](#)

OUR PK 23500 LOADER CRANE FEATURES



FUNCTIONAL DESIGN

Practical and attractive

Robust plastic covers protect crane parts against dirt and damage. Every point on the crane is well thought out, especially in regards to service matters where such highlights are essential. A functional appearance, increased operational capabilities and service practicality are delivered all together with Palfinger loader cranes - during the entire life cycle.



ERGONOMIC CRANE CONTROL

All information at a glance

The operating levers for all crane functions are arranged ergonomically on the console. This facilitates comfortable, efficient working. The control console is mounted so that it is easy to service.



HIGH SPEED EXTENSION

For efficient assignments

The High Speed Extension speeds up the extension boom system. The crane works faster and more efficiently.



COATING TECHNOLOGY

Top quality surface protection at a glance

The KTL coating lays the foundation for a perfect surface protection. Afterwards, the components are either coated in the powder-coating facility or are finished with a two-components-topcoat. High value retention and excellent corrosion protection for the whole life of a crane.



LOW-MAINTENANCE EXTENSION SYSTEM

With sliding elements made of synthetic material and the high-quality KTL coating, this boom system significantly simplifies service performed by the operator. This saves time and money.



OVERLOAD PROTECTION SYSTEM

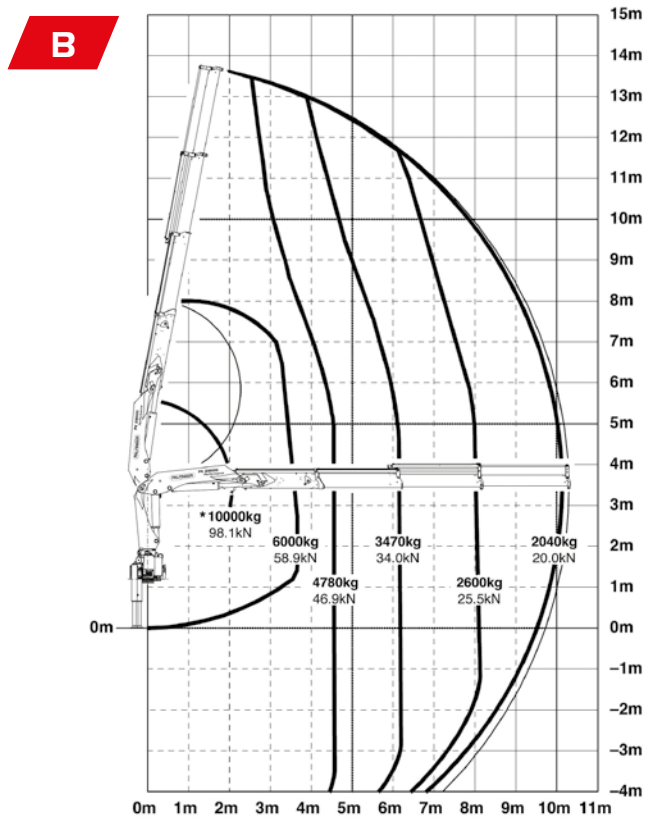
This feature with three hydraulic adjustable valves secures a safe working environment. If the value of 107% of the maximal load is reached, the overload protection system responds and only the retraction in the outer boom is available. This helps to guarantee a safe operation of the crane and to prevent damages in the parts.

TECHNICAL SPECIFICATIONS

Max. lifting moment	21.9 mt
Max. outreach	10.3 m
Slewing angle	400°
Slewing torque	2.8 m
Width folded	2.5 m
Max. operating pressure	300 bar
Pump capacity	50-75 l/min

LIFTING CAPACITY DIAGRAM

Our PK 23500 loader crane is a strong multitalent. It is able to handle more than two tons at full outreach of over ten metres. This corresponds to a mini-excavator.



The outreaches stated are with a boom angle of 20° and are therefore not the maximum.





READY TO OPERATE

PALFINGER ensures that the loader cranes deliver their promised performance at the highest level. The entire system consisting of the crane, truck, subframe and entire hydraulic system is decisive.

With the Renault Truck K 380 and PALFINGER PK 23500 Performance, we have built a truck for the harshest conditions that the transport, construction and related industries present.

The whole turnkey solution is available via paldrive.palfinger.com



THE HIGHLIGHTS OF OUR MOUNTING CONCEPT

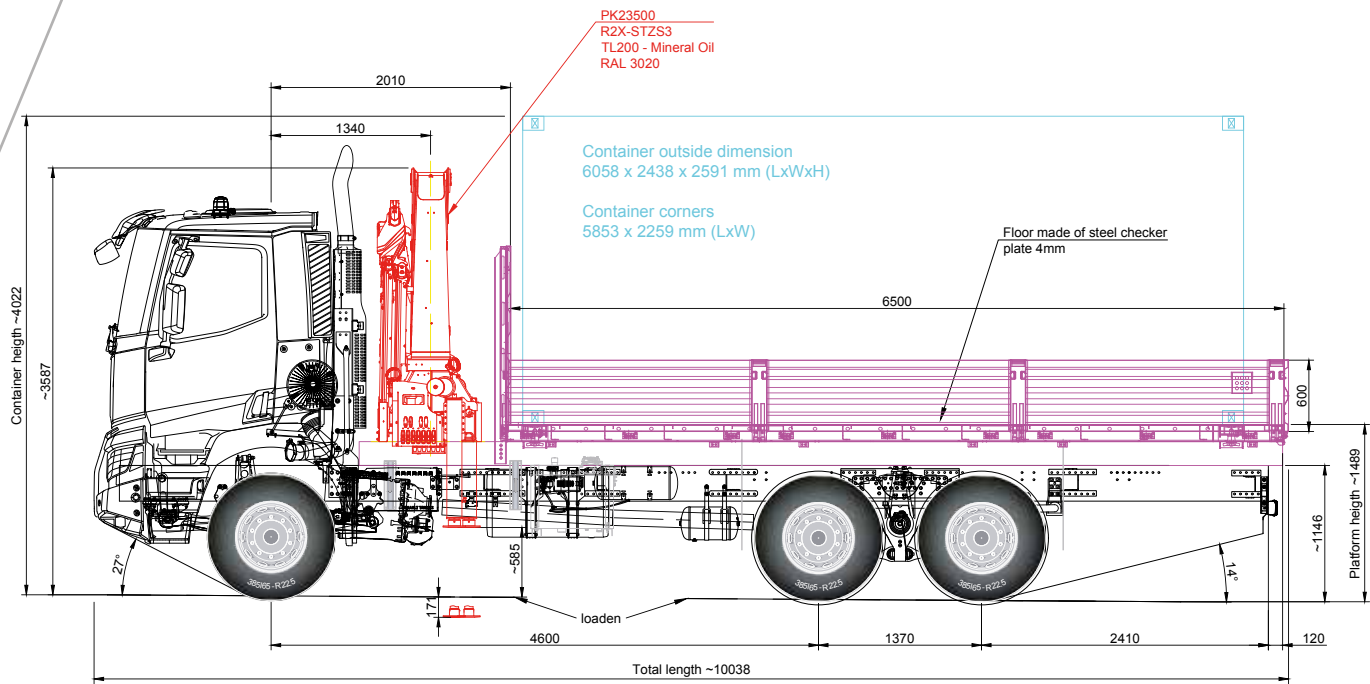
- Foldable & detachable side boards & rear wall to offer flexibility
- 12 quality lashing rings for fast and flexible cargo handling in a safe manner
- 4 Container locking mechanisms for ISO-containers
- Mudguards on every axle for improved protection against gravel impact and dirt
- Platform includes a step for easy access
- 6500 mm internal body length
- Standardised body for different loader crane models



KEY FACTS ABOUT THE TRUCK

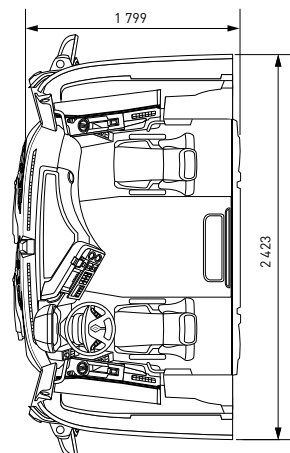
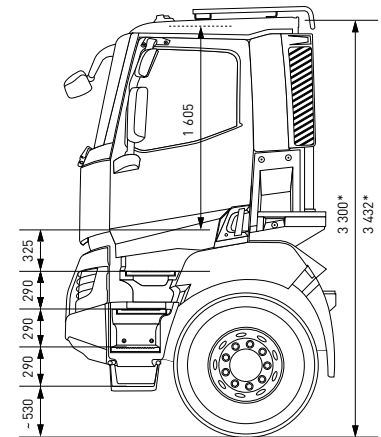
- Renault K 380 P6X4 HEAVY.34 E3 - GVW 34 t / GTW 37.5 t
- Wheelbase: 4600mm
- Engine-type: DXi11
- Performance: 240 kW Euro3
- Optidriver Xtrem: Driver-friendly system for controlled fuel consumption
- Suspension front: 3-leaf reinforced front leaf springs & stabiliser bar
- Suspension rear: 11-leaf elliptic suspension, stabiliser bar & rear shock absorbers
- Max weight front axle: 9.000 kg / Max weight rear axle: 32.000 kg
- Tire dimension: 13 R22.5. Profile B. M840 EVO / L355 EVO. Steel disc wheels
- Safety Features:
 - Hill start aid
 - Anti-spin regulation
 - Neutral inhibition
 - Off-road mode
 - Speed limiter reverse gear at 5 km/h
 - Electronic park brake





GOOD TO KNOW ABOUT THE CABIN

- Comfortable seat position for the driver
- Cab width reduced in the front for greater manoeuvrability
- All-steel bumper in the front, polycarbonate headlights and optic protection grids to be ready for the toughest conditions
- 27 degree approach angle



PALFINGER AG

Lamprechtshausener Bundesstraße 8
5101 Bergheim
Austria

T +43 662 2281
info@palfinger.com
www.palfinger.com

Available at:

PALDRIVE.PALFINGER.COM

Cranes shown in the leaflet are partially optional equipped and do not always correspond to the standard version. Country-specific regulations must be observed. Dimensions may vary. Subject to technical changes, errors and translation mistakes.

KP-PK235-RENM1+EN

PALFINGER.COM

in cooperation with



**RENAULT
TRUCKS**

www.renault-trucks.co.za