

PALFINGER

PALDRIVE TEC CONTAINER LOADER CRANE

PK 58.002 TEC 7 & LOW-BUILT
PLATFORM WITH CONTAINER LOCKS
MAN TGS 35.510 8X4H-6 BL CH



[PALFINGER.COM/PALDRIVE](https://palfinger.com/paldrive)

PALDRIVE PALFINGER TURNKEY SOLUTIONS

With PALDRIVE , we offer immediately available complete vehicles.
By combining our extensive expertise in our product line of loader cranes with the concentrated knowledge from our PALFINGER Mounting Competence Center, or MCC, we can transform innovative developments and successful concepts into standardized solutions for you. With PALDRIVE, we provide these standardized yet modular and cost-effective installation concepts as ready-to-use complete solutions. You, as our customers and vehicle installation partners, can directly benefit from this „One-Stop-Shop“ experience. With optimally designed, as well as specialized, vehicle solutions, we precisely meet the individual needs of your daily work, enabling you to deliver peak performance. One of these vehicle concepts is the TEC Container Loader Crane.



For further information on our **PALDRIVE complete vehicles**, please scan the QR code or visit us at:
www.palfinger.com/paldrive



Here's the **PALDRIVE Video**.
Simply scan the QR code or visit our PALFINGER YouTube channel:
www.youtube.com/palfinger



TEC CONTAINER LOADER CRANE

IDEAL FOR ASSEMBLY OPERATIONS AND CONTAINER HANDLING

This vehicle concept is ideally suited for the construction industry's needs and the transportation of goods and containers. Through the optimal coordination between the front-mounted loader crane, the carrier vehicle, and the body installation, we have created a tailored solution for assembly operations and container handling. This well-thought-out PALDRIVE concept, with its powerful lifting moment of 55.5 meter tons and remarkable outreach of 31.4 meters with the fly jib, is designed for use as a assembly crane and for transporting containers. Even bulky or palletized goods can be precisely loaded with the PK 58.002 TEC 7 loader crane. With a loading area of over 15 square meters, it can accommodate up to 14 Euro pallets. Thanks to the integrated and extendable container locks, a 20' ISO container can also be securely transported. In case the cargo is wider than the vehicle itself, the over-width warning signs ensure safe transport. The detachable side walls can be securely stored, and numerous lashing points enable optimal cargo securing. All of this, and much more, is what we understand as a PALDRIVE complete solution.



PALFINGER

PK 58.002 TEC 7

PRECISE AND POWERFUL

LEARN MORE!

For further information about this product, please scan the QR code.

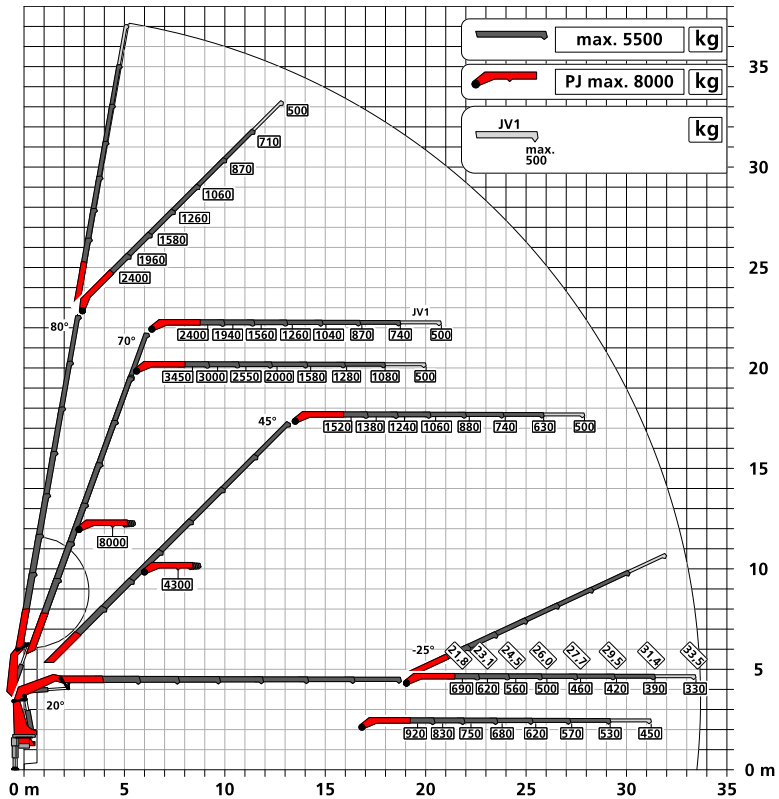


EFFICIENT WORK WITH A HIGH COMFORT FACTOR

LIFTING CAPACITY DIAGRAM

PK 580 TEC F PJ 150 E JV1 DPS-C

Extended outreach thanks to fly jib and mechanical extension*.



TECHNICAL SPECIFICATIONS

Max. lifting moment	55.5 mt / 544.8 kNm
Max. lifting capacity	20,000 kg / 196.2 kN
Max. hydraulic outreach	18.9 m
Max. outreach with fly jib	31.4 m
Slewing angle	continuous
Max. stabilizer spread	7,800 mm

FLY JIB – ADDITIONAL KNUCKLE BOOM



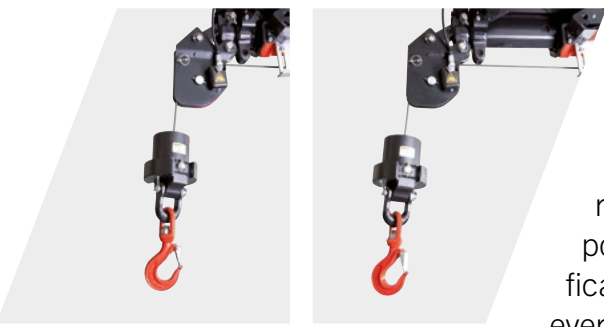
The additional knuckle boom, fly jib, extends the crane's working range, thereby expanding its potential applications. The ability to work with or without the fly jib significantly enhances flexibility in day-to-day operations. All attachments such as winches, rotators, grabs, etc., can also be used without restrictions with the fly jib.

MFA – MULTIFUNCTIONAL ADAPTER



With a variety of available crane attachments that can be easily and ergonomically switched using the specially designed PALFINGER Multifunction Adapter (MFA), this vehicle concept becomes a multifunctional tool perfectly equipped for a wide range of diverse tasks.

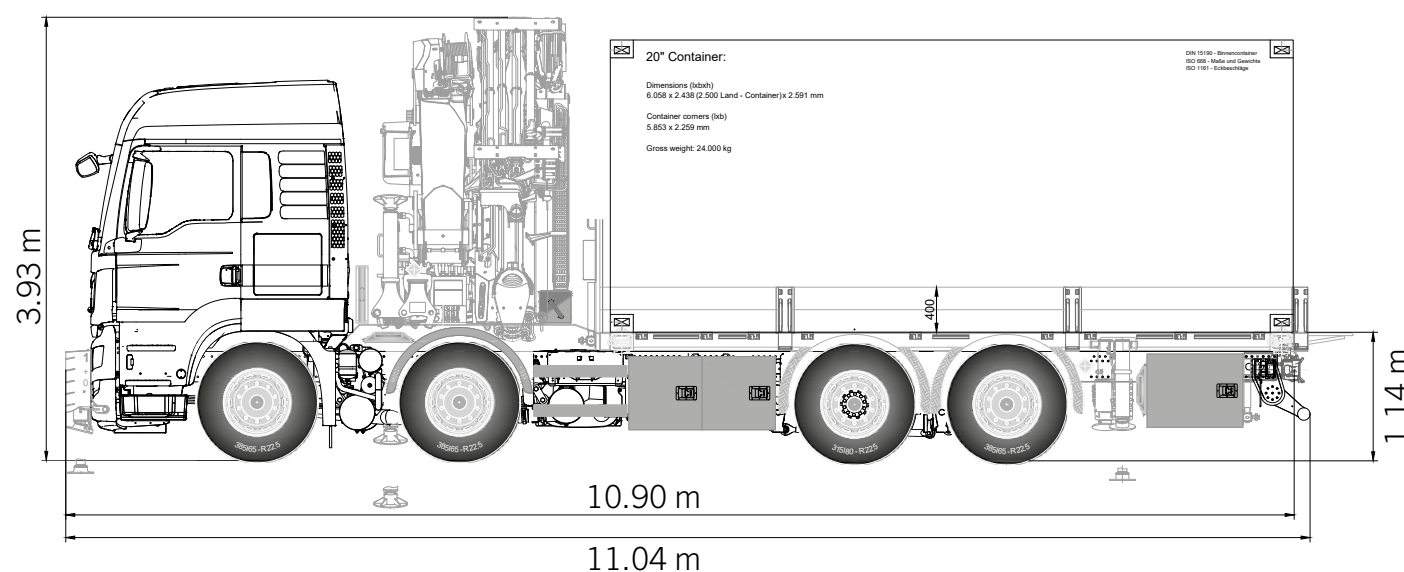
SRC & RTC – MORE COMFORT IN ROPE OPERATIONS



SRC ensures a constant distance between the roller head and lower block during crane operation. This keeps the distance to the load constant at all times. RTC automatically controls the rope length at any moment and in any position. In combination, these two systems significantly enhance comfort and improve efficiency in every winch operation.

LOW-BUILT PLATFORM WITH CONTAINER LOCKS

For more information about PALDRIVE, please scan the QR code.



Total length:	11.04 m	Total height:	3.93 m
Clutch length / A-dimension:	10.90 m	Loading height:	1.14 m

Crane position:	front-mounted
Interior dimensions:	2,480 x 6,255 mm
Payload:	9,500 kg
Floor:	27 mm plywood
Cargo securing:	2 pairs of JOST container locks manually extendable to 3,000 mm, 7 tie-down points per side (2 t)
Side wall height:	400 mm
Front wall height:	1,000 mm
Storage options:	1 x toolbox 1300 x 650 x 650 mm 1 x dust box for sideboards 2,450 x 850 x 650 mm 2 x chain boxes on the front board 2 x chain boxes on the outriggers

The multifunctional front wall in anthracite color provides multiple storage options for chains, tie-down straps, and round slings using hooks or a dust box, ensuring secure storage during transit. Furthermore, the front board features a pole storage area.

The multitude of tie-down points ensures optimal cargo security. A more customized means of securing all types of cargo is provided by the poles and the integrated bars in the floor. The vehicle is also equipped with container locks, further enhancing flexibility.

Fold-out brackets at the rear of the vehicle allow the rear wall to be folded down on the same level with the loading platform, eliminating the need to remove it. This extends the loading area and creates an open space to the rear.

CHASSIS MAN

TGS 35.510 8X4H-6 BL CH

LEARN MORE!

For further information on this product, please scan the QR code or visit the MAN website.



MEDIA SYSTEM NAVIGATION PROFESSIONAL 12.3-INCH



The MAN infotainment system with a high-resolution 12.3-inch color display offers all the high-end features of a modern radio, navigation, and entertainment system. The integration of the rearview camera into this system eliminates the need for an additional dashboard screen.

12.3-INCH PROFESSIONAL COMBINATION INSTRUMENT



The high-resolution, fully digital Combination Instrument Professional is a 12.3-inch color display. It presents all the essential operational information required for vehicle operation to the driver in a clear and easily comprehensible manner. The fully digital display introduces a new way of visualization with optimal information transfer to the driver.

DRIVER-COMFORT SEAT WITH HEATING & VENTILATION



The air-suspended driver-comfort seat with lumbar support, shoulder adjustment, and integrated headrest offers a nine-stage, weight-dependent seat height adjustment. The memory and quick lowering function ensure comfortable entry and exit. The integrated seat heating and ventilation further enhance driving comfort.

EASY CONTROL



The additional arrangement of four buttons on the driver's door significantly enhances comfort during daily work. This allows important and frequently used vehicle functions to be operated ergonomically without the need to re-enter the vehicle cabin.

PERFECT COMBINATION OF FLEXIBILITY AND PERFORMANCE.

TECHNICAL SPECIFICATIONS

Engine	510 HP, EURO 6
Wheelbase	1,795 / 3,505 / 1,350 mm
Fuel Tank	390 liters, right-mounted
AdBlue Tank	35 liters, right-mounted
Transmission	MAN TipMatic 12.28 OD
Front Suspension / Rear Suspension	Leaf spring / Air
Front Tires	385/65/R22.5
Rear Tires	315/80/R22.5

HYDRODRIVE

Thanks to Hydrodrive, a second drive axle can be engaged at the push of a button. This not only enhances driving comfort but also improves safety in traction-critical situations and during acceleration.





