

# SPS 12500 STIFF BOOM CRANE



# TECHNICAL SPECIFICATIONS

## Product Description

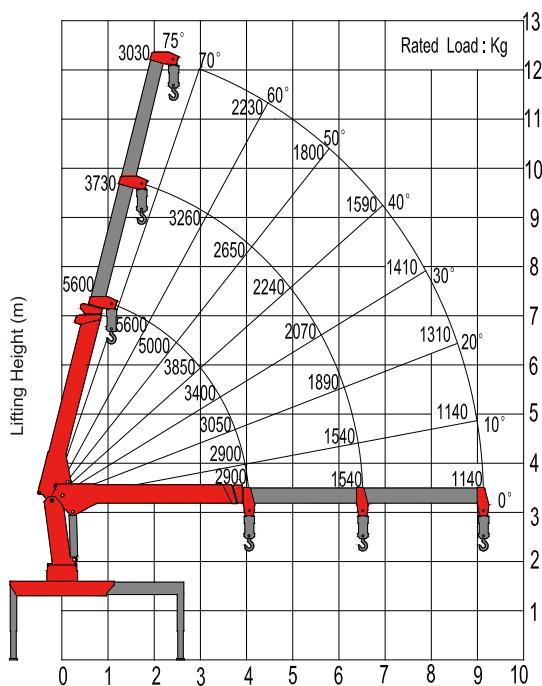
- SANY PALFINGER produces according to European Quality Standards to ensure the best reliability, performance and safety in the industry
- High tensile strength extension booms to optimize lifting height and working range
- The wide outrigger span ensures the best stability in all mounting situations
- High safety factor with greater reliability
- Standard package includes Emergency Stop Button
- Standard package includes Working light
- Standard package includes high pressure filter
- Standard package includes Over-winding Stop
- Optional two speed winch
- Optional Oil Cooler
- Optional Overload Protection System

## Technical Data

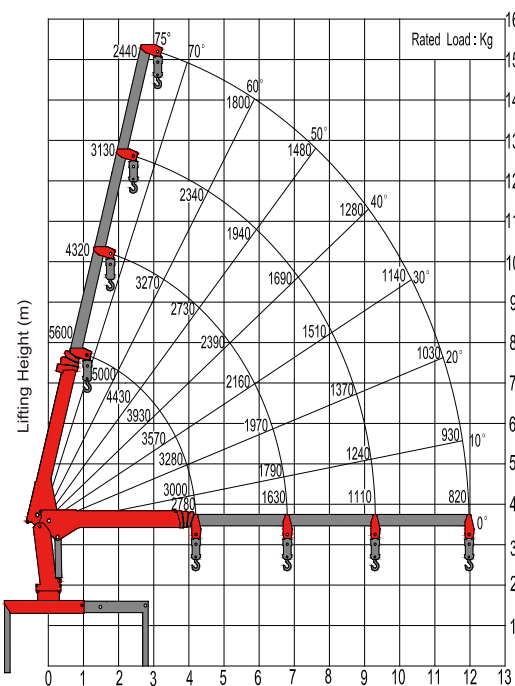
Basic Data	SPS 12500A	SPS 12500B
Rated Lifting Moment	12.5 mt	12.5 mt
Rated lifting capacity	5000 kg(2.5m)	5000 kg(2.5m)
Max. outreach	9.0m	11.6m
Max. lines of the hook	4	4
Slewing angle	全回转	全回转
Boom raising angle	0 ~ 75°	0 ~ 75°
Max. lifting height (the measurement from the ground after the outriggers fully extended)	11.1 m	13.6m
Length of the boom system (retracted)	4.2 m	4.2m
Length of the boom system (fully extended)	9.3m	11.9m
Boom Sections	3	4
Outrigger span (fully extended)	5100 (m)	5100 (m)
Recommended Flow Rate	55 L/min	55 L/min
Operating pressure	23/25 Mpa	23/25 Mpa
Recommended oil tank capacity	100 L	100 L
Crane moment (dynamic)	176.4 kNm 18.0mt	168.6 kNm 17.2 mt
Torsional moment (dynamic)	13.1 kNm 1.3 mt	13.1 kNm 1.3 mt
Crane Weight	2260 kg	2270 kg

# LIFTING CHART

SPS12500A



SPS12500B

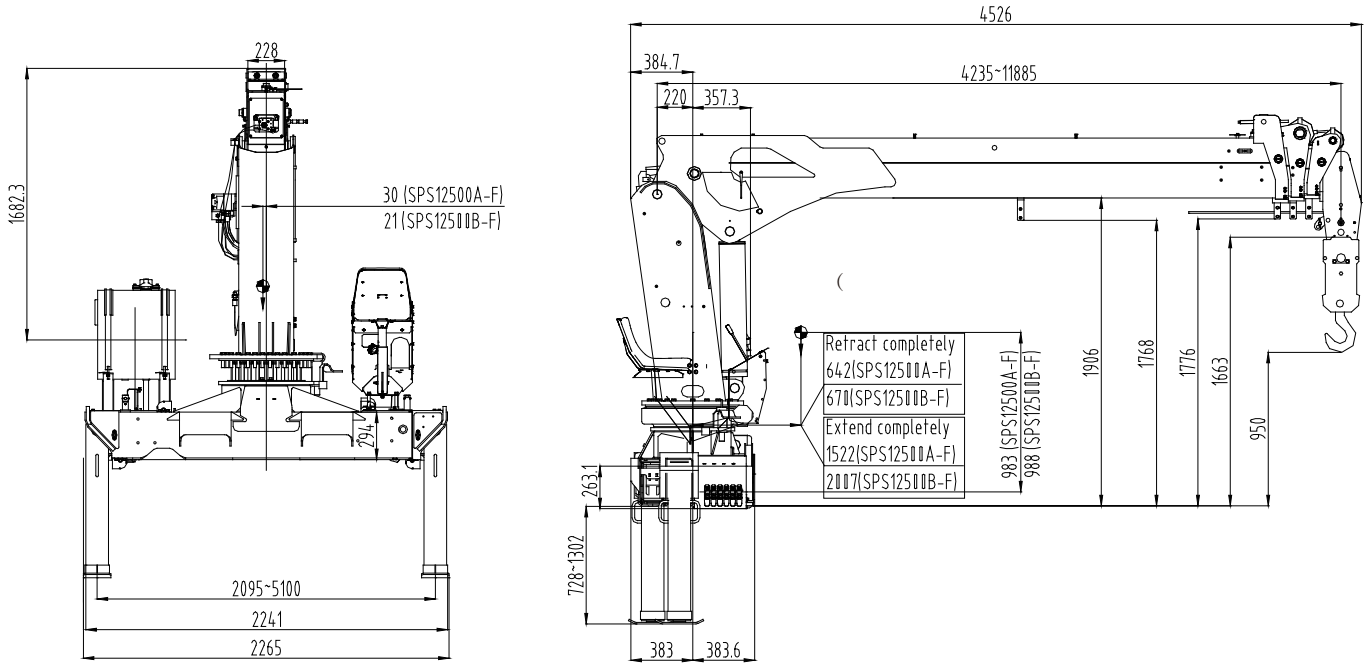


NOTE

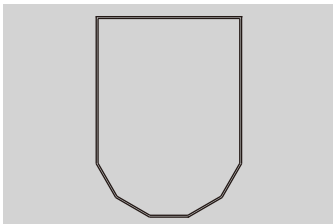
Load chart may be different based on crane options.  
 The above lifting height and boom angles are based on a straight (unladen) boom.  
 Allowance should be made for boom deflection under laden conditions  
 Lifting capacities must not exceed 85% of tipping load.

# CRANE DIMENSION

SPS12500B-F



# FEATURES & OPTIONS



**Octagonal Boom Profile**

- High strength and rigidity due to Octagonal cross section



**High Tensile Steel**

- High Tensile Steel: HG785, SC960
- Widely used, able to withstand higher forces



**Overload Protection System**

- Built in safety function
- Stops all movements that could further increase the lifting moments



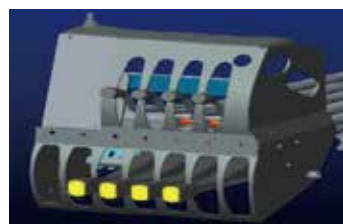
**Working Light**

- Safer operations in dusty and dark working conditions
- Optimal visibility for work
- LED light option



**High Pressure Filter**

- Ensure proper functionality and longer lifetime of crane



**Proportional Hydraulic System**

- Sensitive and stable controls for precise operation
- Operator is able to utilize multiple functions simultaneously



**Load Indicator**

- Provides operators with important information on possible overloading and lifting conditions



**Two Speed Winch**

- Designed to maximize efficiency

三一帕尔菲格直臂式随车起重机-SPS 35000

由于技术不断更新，材料配置和技术规范及产品配置如有更改，恕不另行通知。图片上的机器可能包括附加配置。  
未经三一帕尔菲格书面允许，不得擅自翻印、传播、使用手册中的图片及版式或修改本手册。

三一帕尔菲格特种车辆装备有限公司  
地址：江苏省如东县经济开发区黄河路189号  
邮编：226499  
售后服务热线：4008 835 318

<http://www.sanypalfinger.com/>