

**SPK 32080**

**PALFINGER**

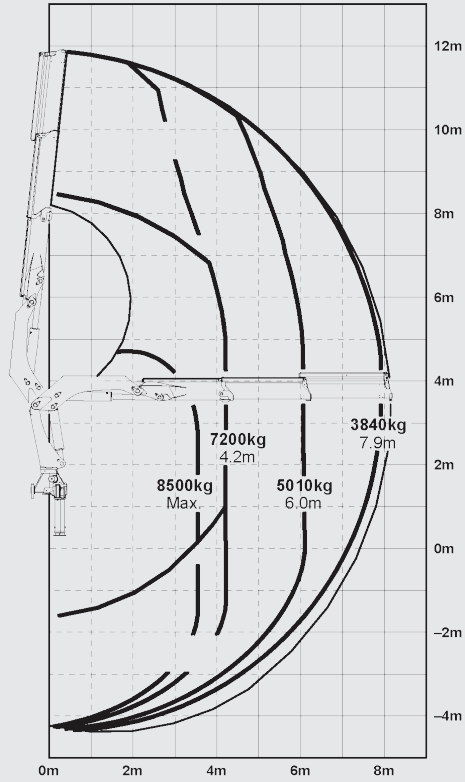
LIFETIME EXCELLENCE

**PALFINGER ASIA PACIFIC  
KNUCKLE BOOM CRANES**

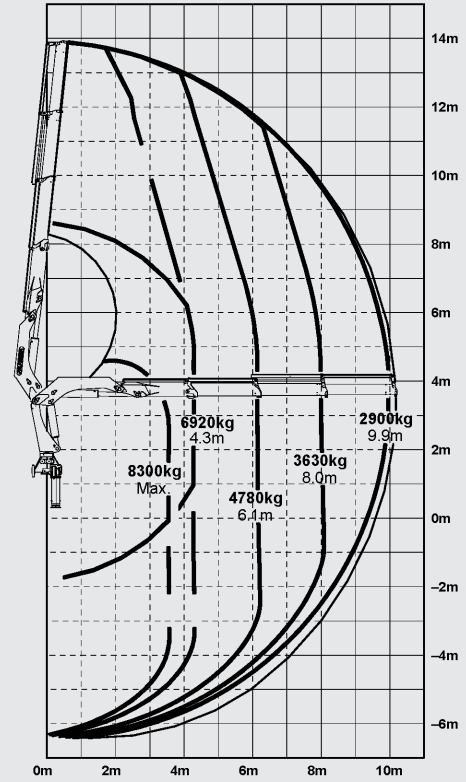


# SPK 32080

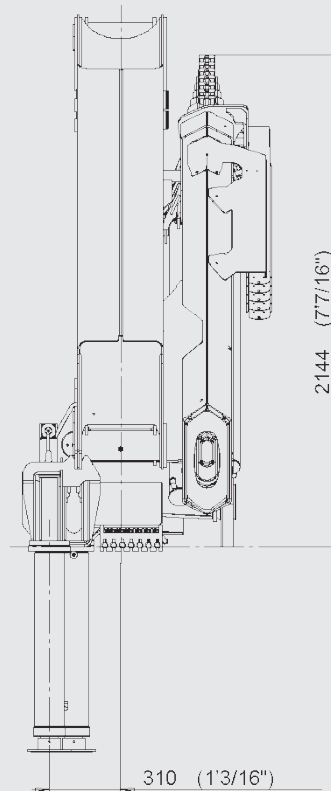
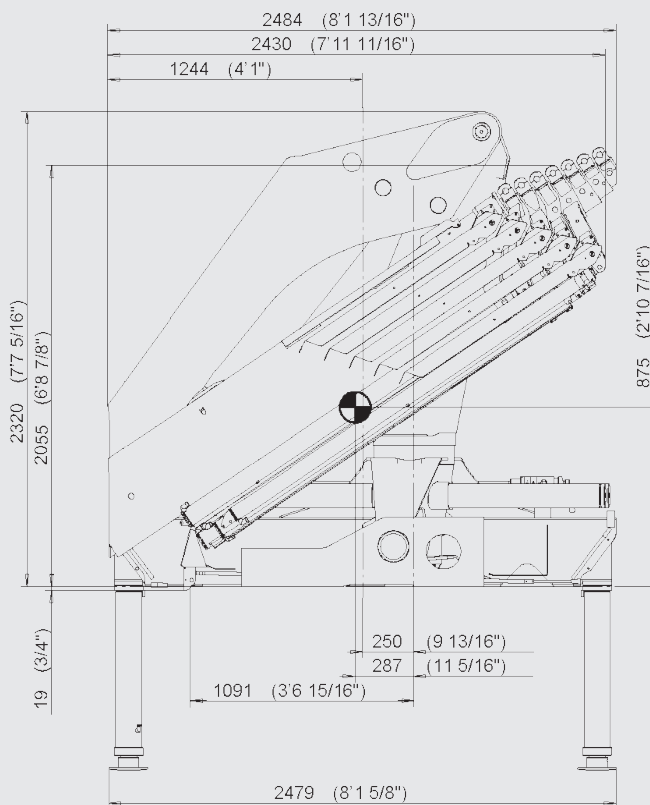
## SPK 32080 A



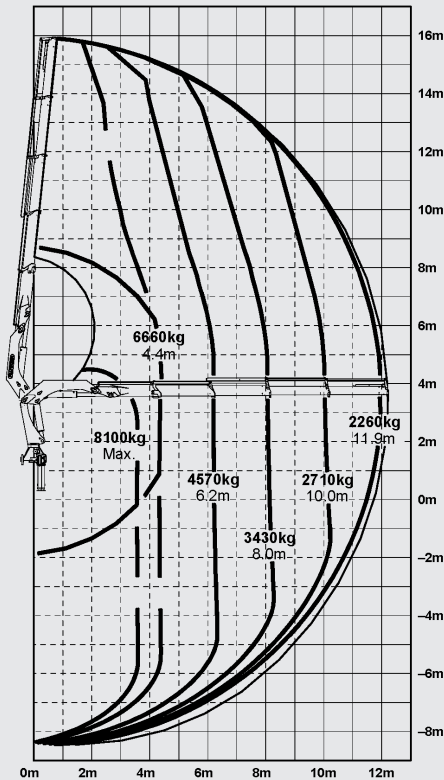
## SPK 32080 B



## DIMENSIONS



\*All dimensions are in mm\*



Max. Lifting Moment	mt	30.4
Max. Lifting Capacity	kg	8500
Max. Hydraulic Outreach	m	8.1 (A) / 10.1 (B) / 12.2 (C)
Slewing Angle	o	400
Slewing Torque	mt	3.8
Stabilizer Spread	mm	6000 (R3X)
Fitting Space Required (Std)	mm	972
Width Folded	mm	2484
Operating Pressure	bar	300
Recommended Pump Capacity	l/min	55 - 80
Dead Weight (Std)	kg	3130



- Equipped with load holding valves for safe crane operations
- High speed boom extension and retraction with Return Oil Utilization
- Optimized lifting performance with the use of high tensile steel and hexagonal boom design
- Lightweight yet robust construction according to European standards (EN 12999)
- Optional Overload Protection System and Emergency Stop Button
- Professional installation solutions with the use of Palsoft programme
- Suitable for installation on 3-axles trucks
- High Density (HD) Paint system provides better resale value retention and attractive aesthetics.

\*

# LIFETIME EXCELLENCE

**PALFINGER LOADER CRANES ARE CONVINCING DUE TO THEIR SUPERIOR LIFE-CYCLE PERFORMANCE. THEY ARE THE MOST ECONOMICAL AND ALSO THE MOST RELIABLE OVER THE ENTIRE PRODUCT LIFE. FROM SOLUTION FINDING TO RE-SALE.**

BETTER  
SOLUTIONS

BETTER  
EFFICIENCY

BETTER  
ERGONOMICS

HIGHER VALUE  
RETENTION



HIGHER  
AVAILABILITY

HIGHER  
SERVICEABILITY

BETTER  
ECOLOGY

MORE  
RELIABILITY

For further information please visit: [www.palfinger.com/thebrand](http://www.palfinger.com/thebrand)

## PALFINGER ASIA PACIFIC PTE LTD

3 INTERNATIONAL BUSINESS PARK | NORDIC EUROPEAN CENTRE  
# 05-25/26 | 609927 | SINGAPORE  
T +65 6591 9191 | F +65 6591 7737  
Enquiries: [asia@palfinger.com](mailto:asia@palfinger.com)  
Website: [www.palfinger.com](http://www.palfinger.com)

