

**OFFSHORE WIND SEGMENT**

# A SKY FULL OF SOLUTIONS FOR THE WIND INDUSTRY





# CELEBRATING THE FUTURE SINCE 1932

**We have always had an eye on innovations.**

Our pioneering spirit has driven us to constantly grow and evolve – from a small workshop to a crane manufacturer and ultimately to the leading provider of innovative lifting solutions. We have pushed the boundaries for generations, have successfully reinvented ourselves and set standards worldwide. In other words: We have been celebrating the future since 1932.

## LIFTING VALUE – CREATING MOMENTUM

**This is our vision. It defines what PALFINGER aims to be in the future and is the very essence of why we do what we do now.**

PALFINGER MARINE lives by this vision every day, too. The company is an integral part of PALFINGER, with around 12,350 employees, with 30 production and assembly locations, and a global network of 5,000 service points. In 90+ years of success, PALFINGER has positioned itself as a market leader in lifting and handling solutions and has introduced numerous state-of-the-art products along the way. Eventually, PALFINGER entered new markets and took root offshore. Today, we provide cutting-edge solutions for the maritime and offshore industry. With PALFINGER MARINE's valuable contribution and stable growth, PALFINGER achieved an overall revenue of EUR 2.36 billion in 2024.

And our journey continues!





# PALFINGER STRATEGY 2030

**The PALFINGER Strategy 2030 is the route for our vision to become a reality. It is based on two strategic pillars: “Go for Solutions” and “Go Digital”.**

## GO FOR SOLUTIONS

By 2030, we will be a solution provider that equips our customers with complete solutions, combining physical and digital elements into one unit – thus creating smart and highly networked machines. Step by step, PALFINGER will evolve from a product provider to a solution provider.

For PALFINGER MARINE, “Go for Solutions” means offering our customers complete, integrated marine solutions across all maritime segments.

## GO DIGITAL

PALFINGER is continuously digitalizing the entire production and value-added chain. The main goal at the end of the day is to be able to offer customers smart lifting solutions and services that provide increased functionality and added value. In line with this strategic pillar, our integrated marine solutions will be enhanced with assisted, remote, and autonomous control functions for marine applications.

*Together we  
are shaping  
the future of  
our customers’  
lifting  
solutions –  
PALFINGER.*

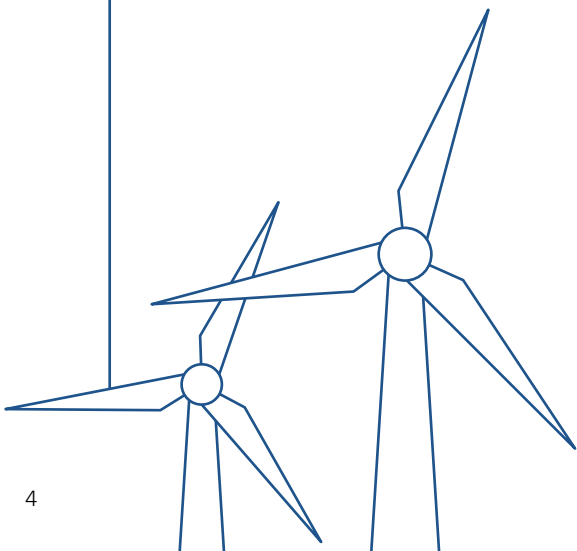


# SOLUTIONS DESIGNED FOR WIND TURBINES AND SUBSTATIONS

PALFINGER MARINE offers a wide range of reliable and innovative products and solutions that are designed specifically for wind turbines and substations. The entire product range is characterized by user-friendly and functional design, low maintenance requirements as well as high-quality materials and components. This ensures high-performing, reliable equipment suitable for work in the harshest maritime conditions.

## APPLICATIONS

- **WIND TURBINES**
- **SUBSTATIONS**
- **ONSHORE SUPPORT AND TRAINING**







Watch the  
video to  
discover our  
innovative  
solutions for  
the offshore  
wind industry.



# FULLY ELECTRIC PLATFORM CRANES DESIGNED SPECIFICALLY FOR THE WIND INDUSTRY

## PALFINGER PLATFORM CRANES

Designed with safety and reliability in mind, PALFINGER MARINE platform cranes are the ideal choice for material handling to and from offshore wind platforms. With their plug-and-play system the installation is simple and fast. Special surface coating and the use of high-quality materials offer extra protection against corrosion.

The cranes require minimal maintenance and are eco-friendly, as they don't need any hydraulic oils.

In short, PALFINGER MARINE platform cranes were developed to expertly take care of any material handling task, offering safety, reliability, compactness, low maintenance, and environmental friendliness.







## TRANSITION PIECE CRANES

- 1 ton for significant wave height of 2 m / 3 t for significant wave height of 1 m
- Highest safety standards & modular design in compliance with EN13852-3
- Minimal maintenance requirements & highest corrosion protection class
- Plug-and-play solution
- Fully electric crane with low power usage (<7kW)
- Easy-to-use emergency evacuation system for injured personnel
- Manual and/or electric slewing
- Hook parking and automatic slack wire prevention
- Handy and light radio remote control with quick pairing function

Get the 3D  
files here.



OUTREACH	LIFTING CAPACITY (single fall)	LIFTING CAPACITY (double fall)
Model range from 3 to 9 m	1000 kg SWL / 2,0 m SWH	3000 kg SWL / 1,0 m SWH







# MAXIMUM MANEUVERABILITY WITH A HUGE RANGE OF WORKING POSITIONS

## PALFINGER NACELLE CRANES

PALFINGER MARINE nacelle cranes provide superior maneuverability with a wide selection of different working positions. They ensure fast and safe lifting between the helideck and the nacelle and from the platform to the nacelle.

Primarily used as service cranes inside the nacelle and to lift spares and tools from the platform, their compact design is ideal for small and confined working areas. In addition, they are built for the use of biodegradable, environmentally friendly hydraulic oil and offer the highest level of customizability.

### NACELLE CRANES

- Custom built and especially adopted to fit the turbine design and its service requirements
- Design according to EN12999
- Fully integrated into the wind turbine power supply and hydraulic system
- Plug-and-play installation
- More than 200 m lifting height
- Best-in-class spooling performance
- Fully proportional wireless remote control

# FULLY ELECTRIC JIB CRANES FOR UNMANNED OFFSHORE INSTALLATIONS

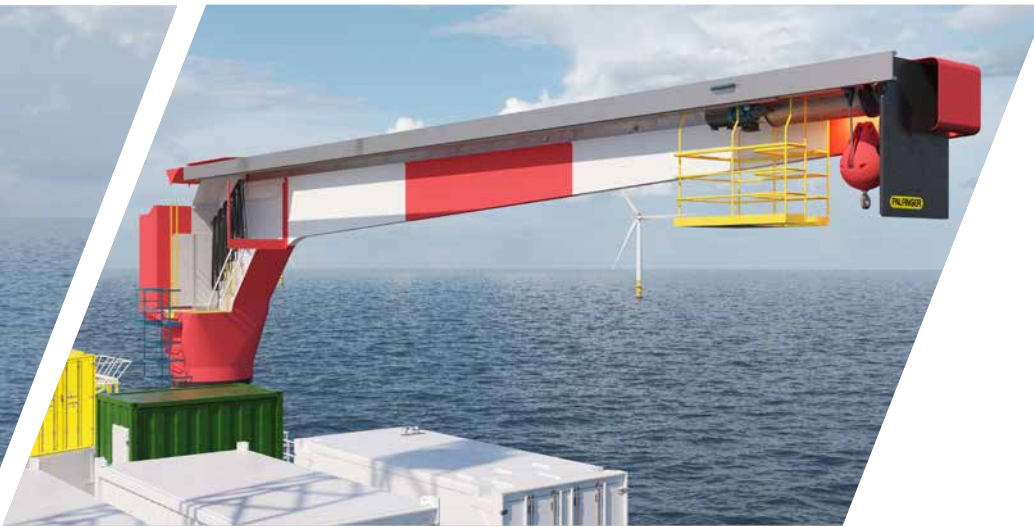
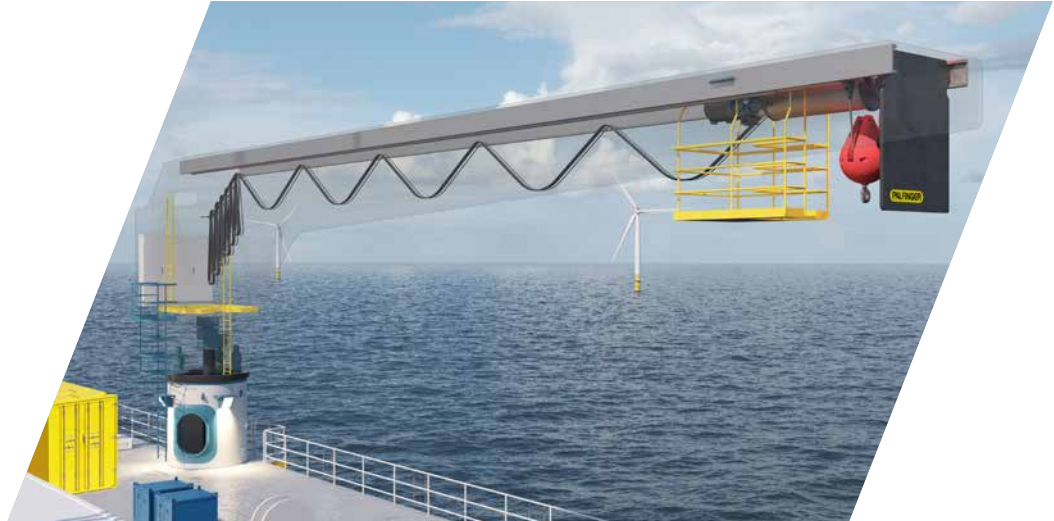
## PALFINGER JIB CRANES

PALFINGER MARINE has developed fully electric jib cranes for use on unmanned offshore installations. Designed to withstand harsh environments, these cranes have no exposed components in the parked position. The control system can be fully integrated into and operated remotely from an onshore control location, with start-up procedures, diagnostics, and integrated support and logistic functions. Their power consumption is only 30 to 50 percent compared to conventional offshore cranes.

Benefits of the crane include zero accidents due to autonomous features and no personnel in the critical loading area, as well as zero waste of energy and time due to fully electric operations, immediate log-in on various platforms, and reduced helicopter transfers.



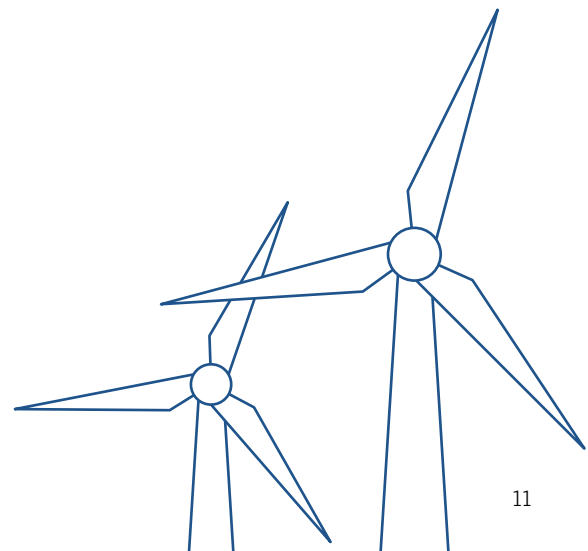




## JIB CRANES

- Fully electric drive
- Prepared for remote operations
- Compact solution
- Electric main winch inside the slewing column
- Electric motors for slewing motion inside the column
- Synchronized trolley and winch movements to reduce power consumption
- Electric trolley parked inside slewing column when crane not in use

OUTREACH	LIFTING CAPACITY
Typically 20–30 m	Typically between 10–20 t



# MAXIMUM CUSTOMIZABILITY AND SUPERIOR EFFICIENCY

## SUBSTATION CRANES

PALFINGER MARINE substation cranes come in a variety of configurations, with telescopic, stiff, and knuckle boom types. Their long-life surface treatment provides superior corrosion protection. They feature internal electro-hydraulic drives for maximum efficiency.

The cranes are also built to handle low and high-temperature operations and are designed for the use of environmentally friendly, biodegradable hydraulic oil. They can be operated from the control platform, allowing simple and efficient control of the load.

### FEATURES

- Design in accordance with EN13852-3 (light offshore cranes)
- Full DNV (DNV ST-0378) approval available
- Superior corrosion protection
- NiCr-plated or stainless-steel piston rods
- Built-in power pack and hydraulic oil tank
- Fully proportional wireless remote control
- Electrical installation compliant with high voltage substation standards

### STIFF BOOM CRANES

PALFINGER MARINE stiff boom cranes feature a pedestal slewing design with hydraulic cylinder luffing.

They are suitable for onshore (harbor) and offshore (substation) installations. Optional features and numerous third party certifications ensure optimum customizability.

### TELESCOPIC BOOM CRANES

The lightweight and maintenance-friendly PALFINGER MARINE telescopic boom cranes are based on a pedestal slewing design with hydraulic cylinder luffing.

The boom extension comes with a telescopic inner section, which ensures a wide operational radius and compact storage position. They are available with plenty of optional features.

### KNUCKLE BOOM CRANES

PALFINGER's knuckle boom cranes are designed to lift high loads with the jib extended and to provide the operator with great flexibility during lifting operations.

Severe weather conditions and heavy seas introduce oscillating motions to suspend loads. The improved level of control makes the crane ideal for offshore lifting operations in higher sea states.





© Orsted

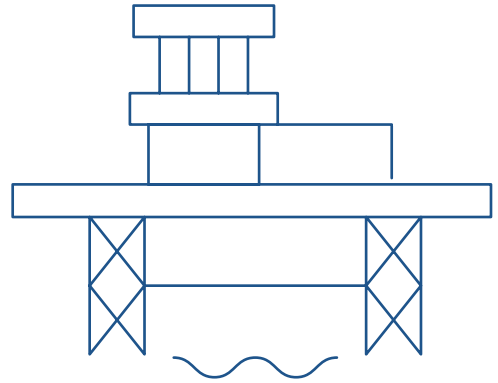




# RELIABLE AND ALWAYS READY

## PALFINGER SUBSTATION CRANES AND DAVITS

PALFINGER MARINE's lifting and handling solutions for substations are ideal for lower decks, covering the safe and fast handling of material and supporting the evacuation of injured people. Their compact design, modular plug-and-play system, and low maintenance requirements make them a highly requested and reliable lifting solution for offshore wind farms worldwide.





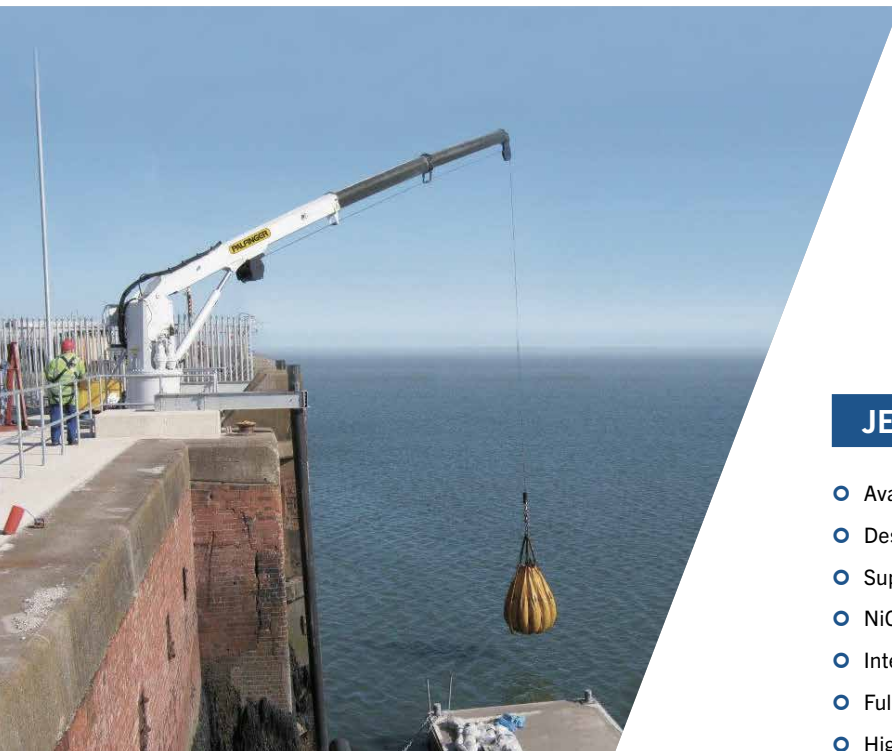
## FIXED BOOM CRANES

PALFINGER MARINE fully electric fixed boom cranes are designed for safe and fast material handling from the substation's boat landing. A special surface coating and high-quality materials offer optimum protection against corrosion. The fixed boom cranes are available either as a standard or as a customized solution.

## LIFE RAFT DAVITS

The PALFINGER MARINE slewing and pivoting davits are designed for lifeboats with up to 39 people. Due to a plug-and-play installation system, they are ready for immediate use, and they meet the latest SOLAS/LSA rules and regulations. In addition to different outreaches to suit various deck scenarios and a fully certified CAR 35 Hook automatic release mechanism, the davits also feature a quick return unit for launching multiple rafts.





## JETTY CRANES

- Available as a telescopic or stiff boom crane
- Designed to meet the EN12999 standards
- Superior corrosion protection
- NiCr-plated or stainless-steel piston rods
- Integrated power pack and hydraulic oil tank
- Fully proportional wireless remote control
- High level of customizability

# RELIABLE AND PROVEN TECHNOLOGY FOR JETTY AND HARBOR SITES

## PALFINGER JETTY CRANES

PALFINGER MARINE jetty cranes are the ideal choice for loading of material from CTVs to jetty and harbor sites and vice versa. They are characterized by high-quality workmanship, reliable and proven technology as well as a maintenance-friendly design. In addition, they are designed for usage with environmentally friendly biodegradable hydraulic oil.



# SAFE ONSHORE TRAINING FOR OPERATORS

## PALFINGER CRANES FOR TRAINING PURPOSES

True to the original platform cranes used offshore, we can develop a replica for training purposes, which is installed in the port area. In fact, through our worldwide service network, we offer safe and effective on-site training to optimally prepare crane operators for offshore operations. On request, the training can be conducted in the local language.



# BUILT TO THE HIGHEST STANDARDS & DESIGNED TO OPERATE IN THE TOUGHEST CONDITIONS

PALFINGER MARINE supplies a variety of deck equipment for the offshore wind industry, with options ranging from wind farm support and service vessel solutions to crew transfer boats. Designed to operate in the toughest conditions, they guarantee reliable and safe transfer of personnel and equipment to and from offshore wind farms.

## ○ **SERVICE OPERATING VESSELS / CONSTRUCTION SERVICE OPERATING VESSELS (SOV/CSOV)**

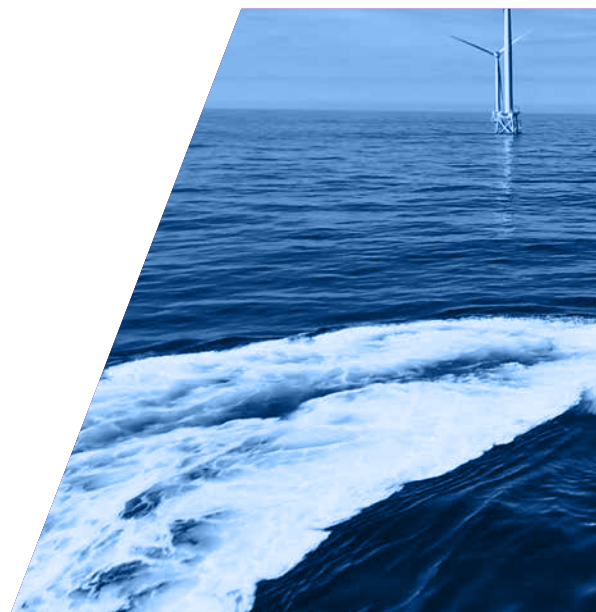
PALFINGER MARINE offers full deck equipment solutions for smaller wind farm support vessels and larger wind farm service vessels. The equipment – ranging from marine cranes and lifesaving packages to winches and offshore cranes – can be supplied in accordance with all applicable rules and regulations.

## ○ **CABLE LAYING VESSELS (CLV)**

PALFINGER MARINE offers a wide range of equipment for cable laying vessels ranging from deck cranes, lifesaving appliances to large and sophisticated winches and A-frames for cable laying operations.

## ○ **CREW TRANSFER VESSELS (CTV)**

PALFINGER MARINE is a supplier of various deck equipment for CTVs. For loading and unloading equipment, we are offering our foldable knuckle boom cranes, which have a very compact construction and act as a multi-functional tool. For safe transfer of personnel and technicians to and from the crew transfer vessel, we have our 3D-motion compensated PALFINGER MARINE Offshore Passenger Transfer System (OPTS).









## FOLDABLE KNUCKLE BOOM CRANES

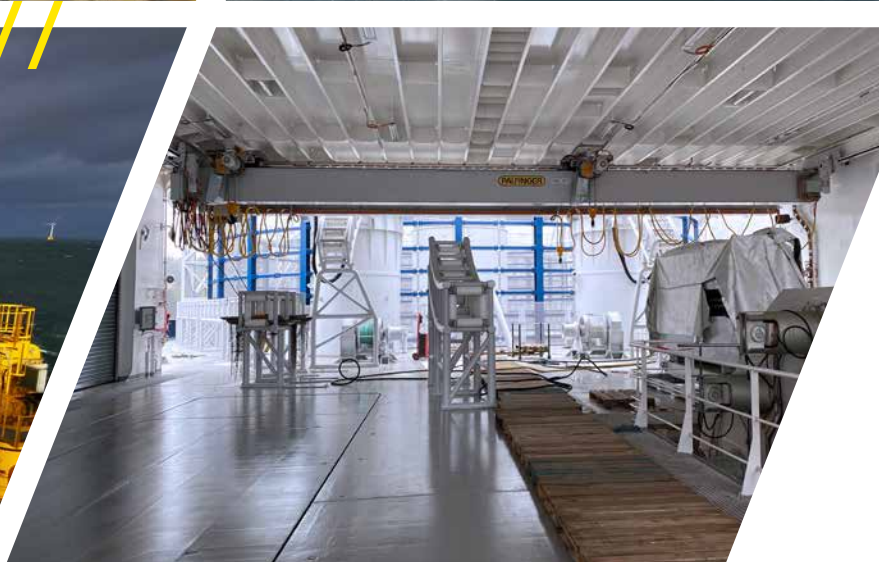
Their sophisticated crane geometry and compact construction make PALFINGER MARINE foldable knuckle boom cranes a convenient, multi-functional tool for effortless loading and unloading of equipment – especially in confined working areas. They can be customized to meet offshore rules and regulations and come with a variety of options and additional features.

- Local control station
- Remote control
- Standing operator platform
- Operator's cabin

## STIFF, TELESCOPIC AND KNUCKLE BOOM CRANES

PALFINGER MARINE stiff, telescopic and knuckle boom cranes are based on a less complex, lightweight and maintenance-friendly pedestal slewing design with hydraulic cylinder luffing. Their superior level of control makes them ideal for offshore operations in heavy seas. With optional features and a variety of available certifications, they meet a wide range of requirements.

- Remote control / operator's cabin
- Overload protection systems: MOPS & AOPS
- Constant tensioning
- Lifting of personnel (man-riding)
- Active heave compensation (AHC)







## HANGAR TRAVELLING CRANES

PALFINGER MARINE travelling cranes come in a variety of configurations and serve a wide range of applications. They can travel within a given area of operation and can be designed as overhead, underslung, gantry, or semi-gantry structures. Depending on the project, travelling cranes are available with electric or hydraulic drives and custom-built for specific requirements.

- Long-life surface treatment (corrosion protection)
- Operation from control platform on crane
- Electro-hydraulic or fully electric drive

# LIFEBOAT SOLUTIONS FOR THE WIND INDUSTRY

## PALFINGER LIFEBOATS AND DAVITS

PALFINGER MARINE enclosed lifeboats are designed to meet the latest IMO/SOLAS regulations and are suitable for a variety of marine and offshore applications. These lifeboats are available in tanker and dry cargo versions and are commonly used on commissioning service operation vessels (CSOVs), cable laying vessels (CLVs), offshore support vessels, research vessels, and more.

PALFINGER MARINE also offers a wide range of lifeboat davits with multiple configurations, enabling customers to choose the most suitable davit system for their specific project requirements.







## LIFEBOAT DAVITS

- Multiple lifeboat davit configurations (gravity, electro-hydraulic, fully hydraulic) suitable for all needs and project requirements
- N Series known for its innovative and fully enclosed design, with all major components mounted inside the davit structure and fully protected from the weather
- Winterization or Polar-Code-compliant packages up to -40°C Polar Service Temperature (PST)
- Available as either standard lifeboat davit (5 m/min) or life-/rescue boat davit (18 m/min)
- Modular design with multiple configurations of standardized components for easy exchangeability and maintenance
- Compliance with the latest IMO/SOLAS regulations, LSA Code, MED as well as USCG and Transport Canada regulations

## LIFEBOATS

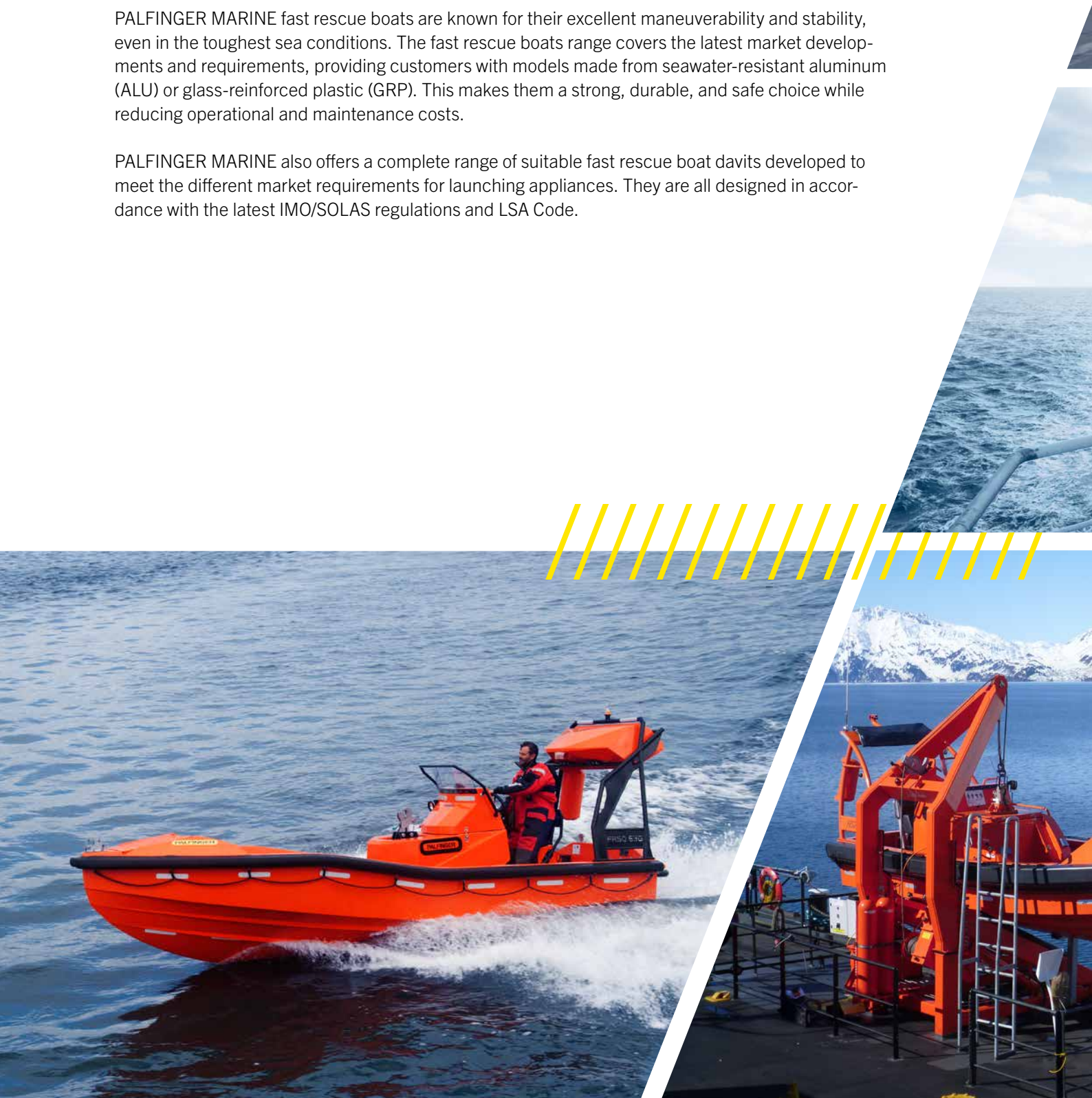
- Fully enclosed lifeboat series with a capacity of 21 to 150 passengers
- Various seat arrangements to meet specific project requirements
- Winterization or Polar-Code-compliant packages up to -40°C Polar Service Temperature (PST)
- Competitive pricing and lifeboat range for different segments
- Compliance with the latest SOLAS/LSA Code, MED as well as USCG and Transport Canada regulations

# EXCELLENT MANEUVERABILITY AND STABILITY

## (FAST) RESCUE BOATS AND DAVITS

PALFINGER MARINE fast rescue boats are known for their excellent maneuverability and stability, even in the toughest sea conditions. The fast rescue boats range covers the latest market developments and requirements, providing customers with models made from seawater-resistant aluminum (ALU) or glass-reinforced plastic (GRP). This makes them a strong, durable, and safe choice while reducing operational and maintenance costs.

PALFINGER MARINE also offers a complete range of suitable fast rescue boat davits developed to meet the different market requirements for launching appliances. They are all designed in accordance with the latest IMO/SOLAS regulations and LSA Code.







## (FAST) RESCUE BOAT DAVITS

- Multiple (electro-hydraulic and fully hydraulic) models to suit all decks and project requirements
- Delivered as a plug-and-play unit – pre-tested and fully certified
- Fully hydraulic series (PRH-H) designed for heavy-duty usage and multiple daily launching and recovery operations
- Innovative and fully enclosed davit system (N Series) incorporates all the main components inside the davit structure, protecting them from the weather
- N Series available with different configurations, including Standard (18 m/min) and High-Speed (48 m/min) versions with constant tensioning and shock-absorbing systems
- Winterization or Polar-Code-compliant packages up to -40°C Polar Service Temperature (PST)
- Fast rescue boat davit certificate available for High-Speed version on the NPDS 3500 FR (Ro-Ro certificate)

## (FAST) RESCUE BOATS

- Models constructed out of either aluminum (ALU) or glass-reinforced plastic (GRP)
- Capacity of up to 15 people, including one on a stretcher
- Easy access to all the main components and service points
- Different inboard diesel engine configurations with water-jet propulsion
- Excellent maneuverability and stability due to V-shaped hull
- Compliance with the latest SOLAS, MED and USCG requirements as well as the LSA Code

# SAFE AND RELIABLE TRANSFER OF PERSONNEL AND CARGO UP TO 1,000 KG

## **PALFINGER 3D COMPENSATED OFFSHORE PASSENGER TRANSFER SYSTEM (OPTS)**

The 3D-motion compensated PALFINGER MARINE Offshore Passenger Transfer System (OPTS) is a multifunctional hydraulic aerial lift designed to ensure the safe transfer of personnel and technicians to and from the service and commissioning vessel. It is also able to lift and move cargo up to 1,000 kg and comes equipped with a fully redundant PLC and RIO system, as well as redundant actuators and sensors.

The OPTS is built according to DNV ST-0378 (for offshore and platform lifting appliances) and DNV ST-0358 (for offshore gangway solutions) standards and able to operate in rough seas up to sea state 5 (Hs 2.5 m). Furthermore, the system offers high operational accuracy and reliability, with a “Return Home Safe” function in case of an emergency as well as maintenance and system status indicators. The PALFINGER MARINE OPTS system is available in two different configurations – mobile or fixed installation.



### **FIXED INSTALLATION UNIT**

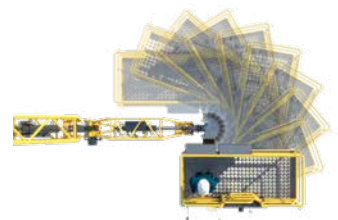
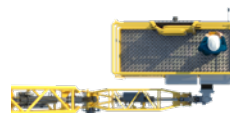
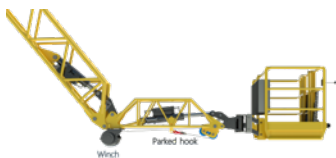
This unit features a permanent installation footprint onboard the vessel – its dedicated HPU is delivered as a separate unit for flexible installation in the space available onboard the vessel. The fixed installation unit has a low weight of 15 t (excluding HPU) and is operated from a fixed control station.



### **MOBILE INSTALLATION UNIT**

This unit is designed for use on vessels where a fixed installation is not possible or not preferred. It weighs 25 t, is operated via a wireless remote control unit, and features a pre-installed OPTS system with a dedicated HPU and all relevant accessories. The unit's movable frame fits in a 40 ft container for easy transportation.





# HANDLING EQUIPMENT FOR DEMANDING AND PRECISE OPERATIONS

PALFINGER MARINE offers a wide range of handling equipment onboard vessels operating in the offshore wind segment. Covering large and complex A-frames, skidding systems for containers below deck and fenders for protecting the vessels towards other structures at sea or in port.

## CONTAINER SKIDDING SYSTEMS

PALFINGER MARINE provides complete systems for skidding and securing containers – an innovative solution for moving and securing containers and cargo.

- Operated by hydraulic cylinders (each line fitted with two)
- Skidding length according to customer's specification
- Push cargo of up to 40 metric tons
- Move cargo at 6–12 m/min

## A-FRAMES

PALFINGER MARINE offers a range of A-frames for stern or side mounting, designed to meet project-specific needs. Customers can choose between two different models: single-fall (one cylinder per side) or double-fall (two hydraulic cylinders per side, knuckle-boom design). These A-frames are ideal for anchor handling, buoy handling, plough handling, subsea handling, and launching/recovering submersibles.

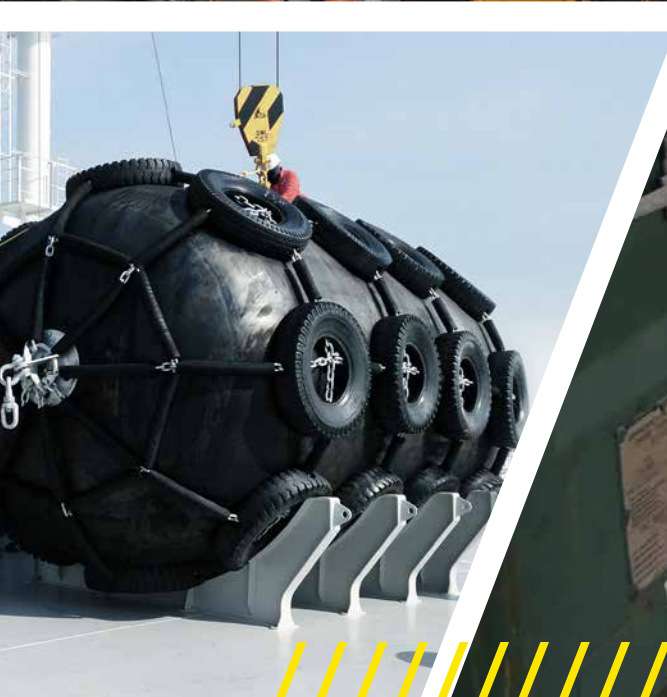
- Hydraulic drive
- Bolted or welded to deck
- Local and remote control

## FENDERS

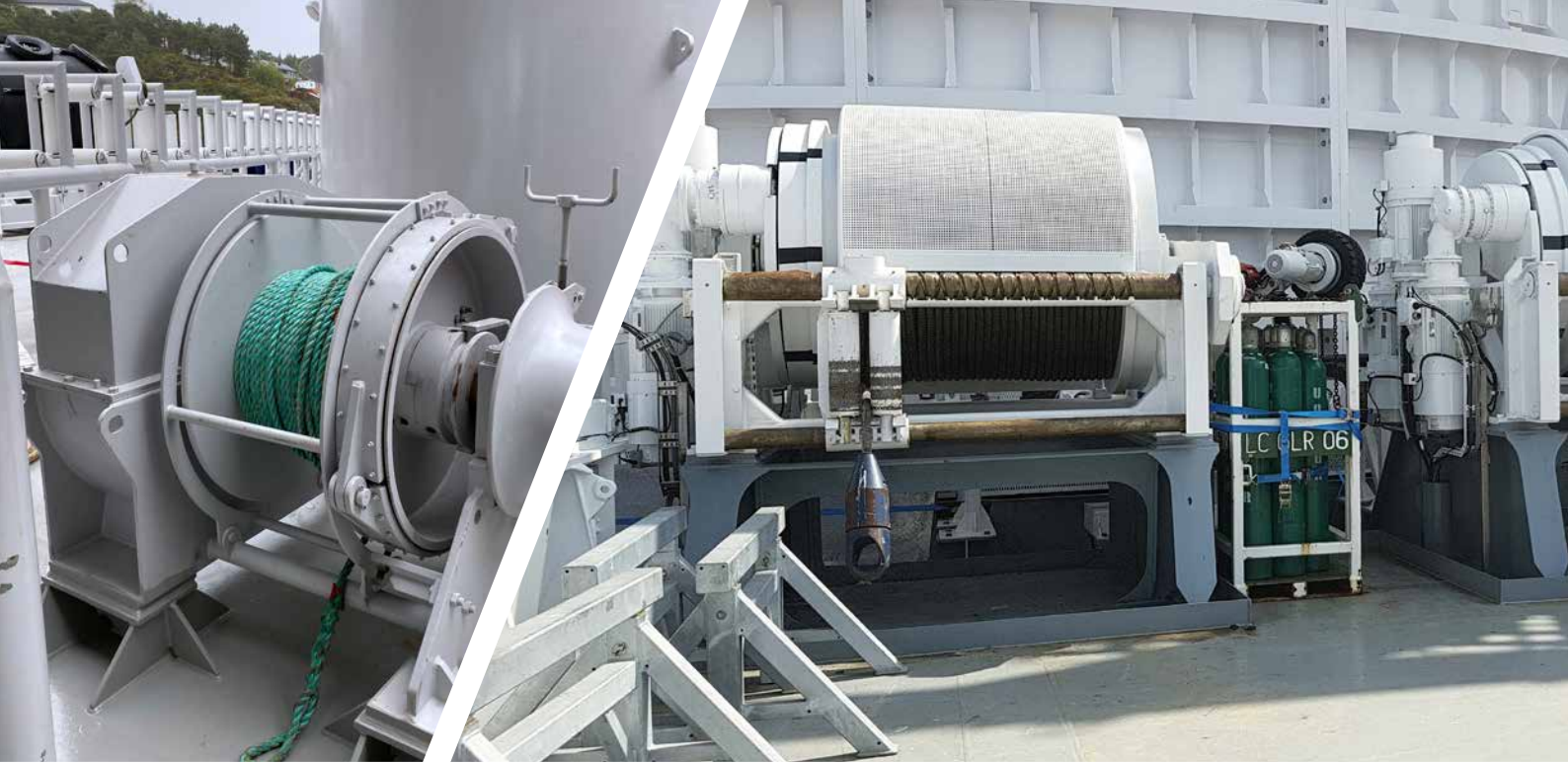
PALFINGER also supports the wind industry with pneumatic fenders for project cargos and operations and fixed fender systems for workboats and support vessels. We offer sales and rental options for both short- and long-term operations worldwide.



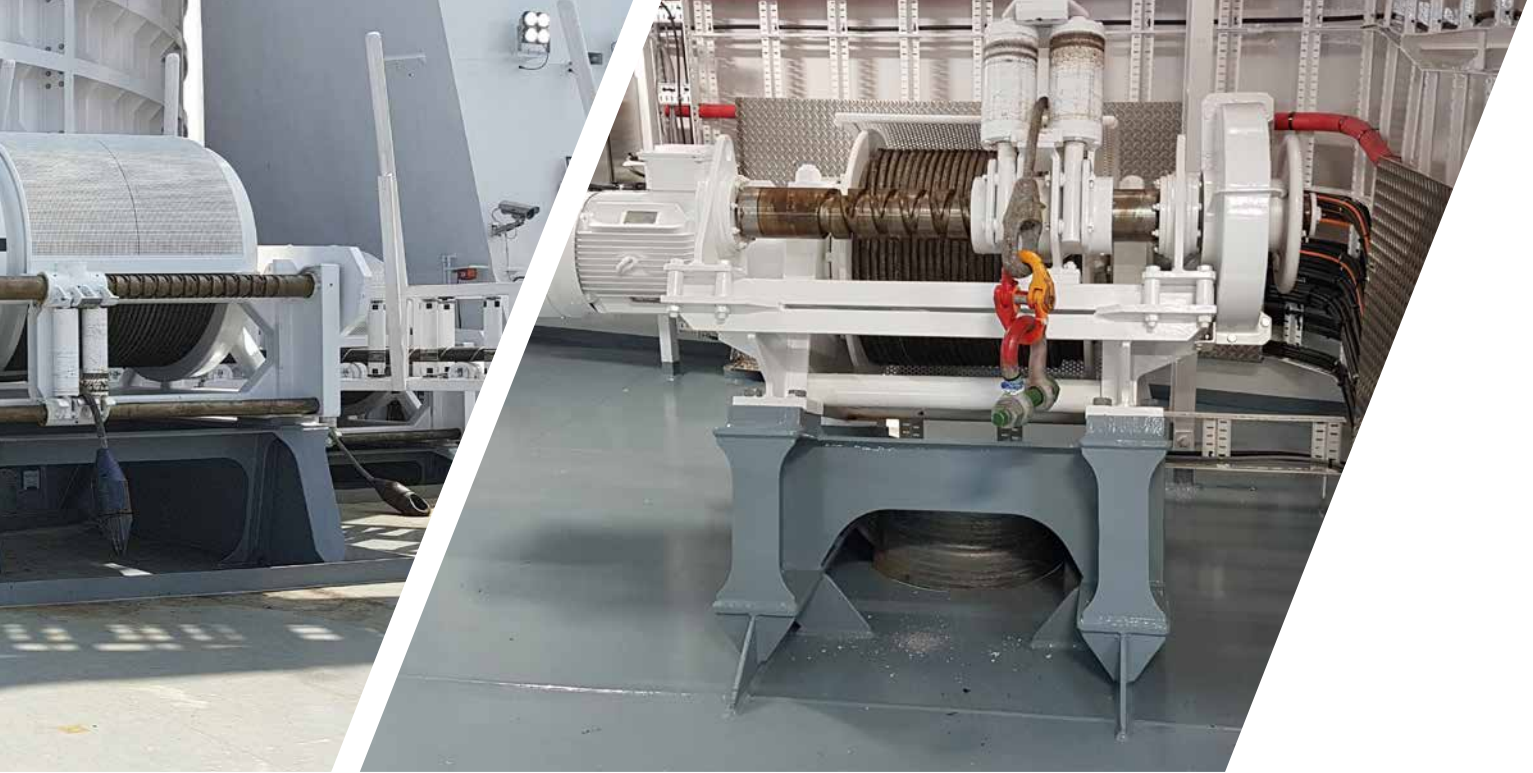












## WINCH SOLUTIONS FOR DEMANDING OPERATIONS

PALFINGER MARINE offers a wide range of winch solutions onboard vessels in the offshore wind segment. Covering solutions from handling anchors and mooring to complex and mission critical applications onboard. Our range of winches for vessels in this segment covers:

- Anchor and mooring winches
- Active heave compensated (AHC) winches
- Abandon & recovery (A&R) winches
- Combined lifting & towing winches
- Towing winches
- Cable initiation winches
- Tugger winches
- Mooring system winches

# OUR SERVICE PORTFOLIO

As a leading manufacturer of innovative and reliable equipment for the wind industry with an impressive global portfolio of 25+ brands, PALFINGER MARINE is committed to flexible and efficient service solutions. With a network of 30 sales and service hubs all over the world, we ensure fast and professional on-site support for our customers.







INSPECTION AND  
MAINTENANCE

SPARE PARTS AND  
REPAIR

REFURBISHMENT AND  
UPGRADES



HOOK  
REPLACEMENT

AGREEMENTS

TRAINING

INDUSTRIAL  
SERVICES |  
ROPE ACCESS

# GLOBAL SERVICE NETWORK

PALFINGER MARINE is a reliable and professional partner in every situation, from telephone assistance to on-time delivery and instant on-site support. A global network of specially trained engineers and experts with extensive know-how and experience provides comprehensive, customized and reliable service solutions to customers worldwide.



## PALFINGER WORLDWIDE



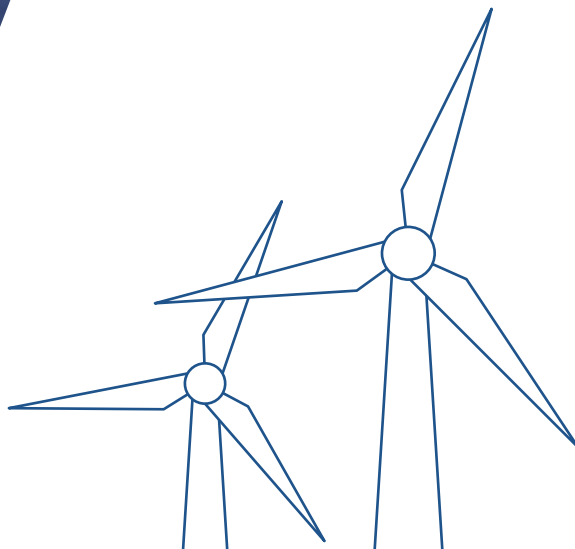
HQ SALZBURG, AUSTRIA



SALES AND SERVICE LOCATIONS



ASSEMBLY AND PRODUCTION







N SITES



**Palfinger Marine GmbH**  
F.-W.-Scherer-Strasse 24  
5020 Salzburg | Austria

[palfingermarine.com/contact](https://palfingermarine.com/contact)

