

**GRIPPING
SOLUTIONS
THE NEW M-SERIES**

PALFINGEREPSILON.COM





POWER.
WHENEVER.

PALFINGER EPSILON.

At PALFINGER EPSILON the issue of sustainability starts where others finish. We don't just limit ourselves to a few specific fields when we talk about sustainable solutions. We create forward-thinking, economical and environmentally friendly systems in every area of the company.

Our customers are assured of the best possible product quality, delivered in the shape of efficient, custom-made, ecologically sound solutions. We apply the same high standards to our own work, and that of our employees. The sparing use of resources achieved by developing innovative solutions is of long-term benefit to the environment.

This is what makes PALFINGER EPSILON a partner you can rely on – a life long!

WE UNITE WHAT BELONGS TOGETHER

The new PALFINGER EPSILON M-Series is a perfect unity of design, comfort and technology. The result is a product that fulfills every individual requirement, and even exceeds expectations.

PALFINGER EPSILON new M-Series sets new standards in design. The new high-seat Masterdrive offers operators absolute comfort and convenience, and the multifunctional command centre provides the ultimate in precision crane manipulation. The new M-Series technology impresses immediately, and thanks to extended boom reach capacities customers benefit from increased operational productivity.

The new PALFINGER EPSILON M-Series is a system that serves every individual requirement, and customers can rely on a product that unites the very best in design, comfort and technology.

The PALFINGER EPSILON M-Series –
The crane for your requirements.



FROM PLANS TO CRANES

How we combine theory and practise.

Ensuring excellence in design, comfort and technology requires taking a variety of perspectives. At PALFINGER EPSILON we bring together all the best brains in the business to generate the best possible preconditions for innovative solutions.

Together with experts in the field of industrial design we draw inspiration from a whole range of solutions, conventional and unconventional. We play with concepts and reject them again until, finally, what starts as a vague idea develops into a completely new product.

Concepts may look great on the drawing board but also need to perform out in the real world. That's where Hermann, our highly experienced test driver, comes in. He does a whole range of stringent and tough tests on all the latest developments that come out of PALFINGER EPSILON.

The sophisticated interplay of theory and practice ensures the final product is a perfect combination of design, comfort and technology – so that we can guarantee our customers exactly what they expect:

Quality you can rely on!
PALFINGER EPSILON.



SAFE IN THE SADDLE

Master Drive is the new high seat from PALFINGER EPSILON.

PALFINGER EPSILON has once again raised the bar for comfort and user-friendliness with a new high seat. Masterdrive enables the operator to enjoy full control of all operational commands. Thanks to the benefits of the most sophisticated design and technology this crane can be operated with a minimum of effort. The ergonomic shape of the comfortable and convenient mechanical suspension high seat guarantees great comfort, and the multifunctional arm rest puts every command at the operator's fingertips.

Multifunctional arm rest

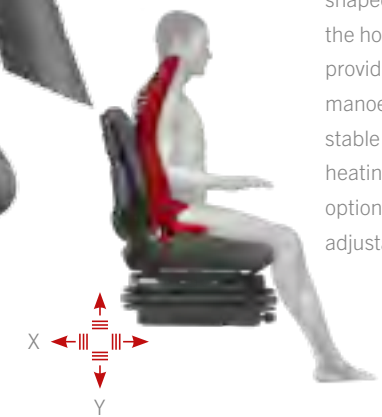
The multifunctional arm rest puts every command at the operator's fingertips.

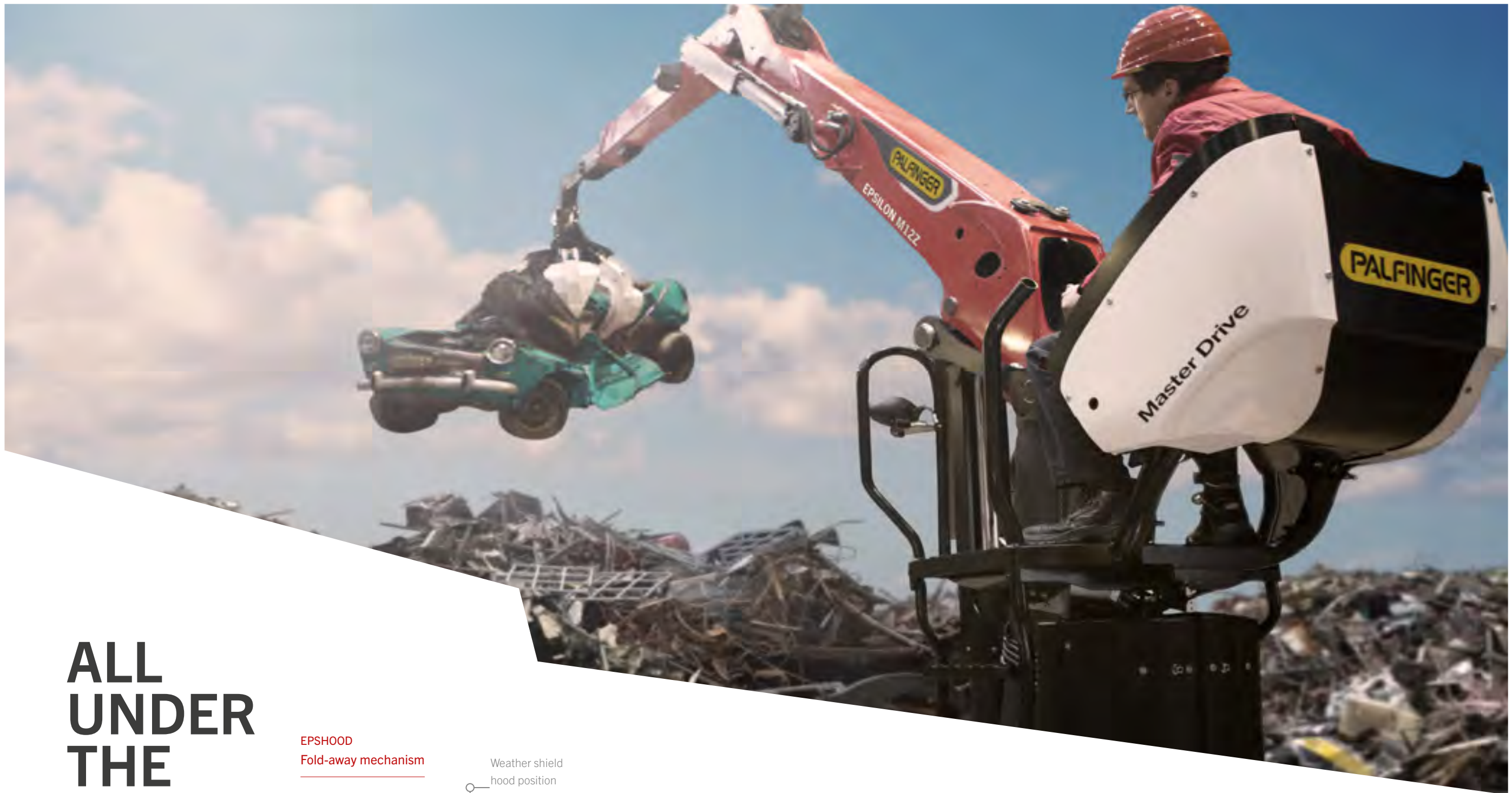
Hydraulic servo joysticks

Hydraulic servo joysticks facilitate precise operation.

High-comfort high seat provides horizontal and vertical suspension

The comfortable, ergonomically-shaped seat from the house of GRAMMER provides maximum manoeuvrability, secure and stable seating, as well as seat heating, weight adjustment options and mechanically adjustable lumbar support.





ALL UNDER THE HOOD

EPSHOOD Fold-away mechanism

The pneumatic fold-away weather hood facilitates a more compact operating position.



EPSHOOD –
The protective hood for safe crane operation.

The EPSHOOD crane operator hood is a newly developed weather shield and gives the driver excellent protection from the elements while operating the crane. The foldaway mechanism and tinted plastic hood keep out the sun, rain and wind during the whole operating process, making every job a pleasant and comfortable experience.

EPSILON M12Z

Service openings

Easily accessible service openings make the replacement of hoses a quick and easy procedure.

Inside hose routing

The unique, inside hose routing solution ensures the risk of damage is minimised and the cost of wear and tear reduced.

Rotary distributor

Easily accessible via service opening.

Finish crane column

Excellent design and perfect functionality.

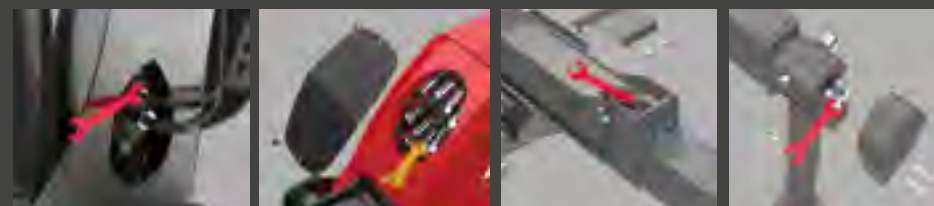
Internally routed hoses

WORTH HIDING

Easily accessible inside hose routing.

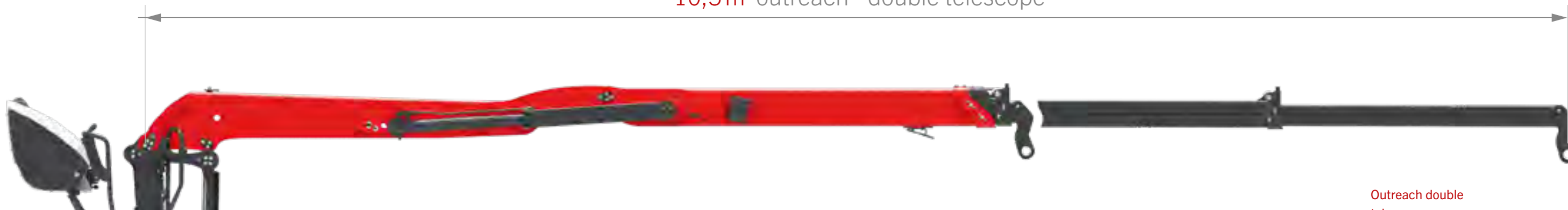
No other crane manufacture can offer anything like the ease of service and technical convenience provided by PALFINGER EPSILON. The unique inside hose routing enables crane operators to gain quick and easy on-the-job service access. Inside hose routing also reduces the risk of damage to the hoses. Service openings on the crane make replacement a simple task and help to save time and money.

Service openings



- Rotary distributor
- Hose routing
- Pipe routing

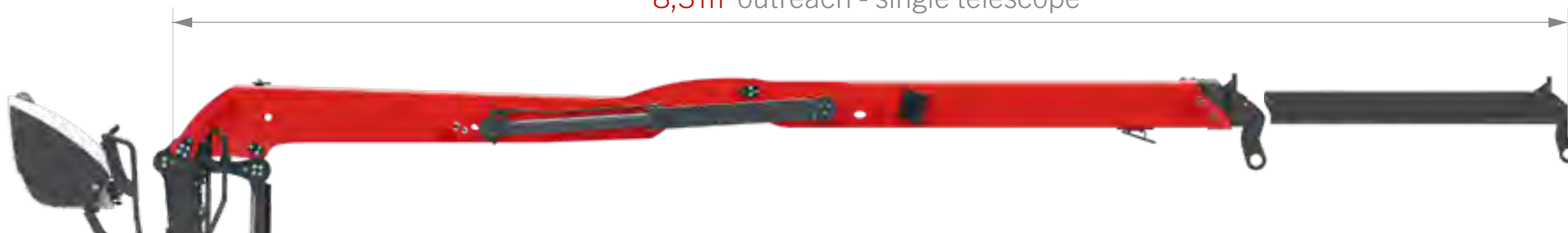
10,5m outreach - double telescope



Outreach double telescope

The new design of the double telescope system provides up to 900mm more reach than the predecessor. The longest reach in its field.

8,3m outreach - single telescope



DUE TO ITS GREATER REACH



Height reduction

The new arm geometry has made it possible to build an even more compact crane with an extra 100mm of ground clearance.

TECHNICAL DETAILS

MZ

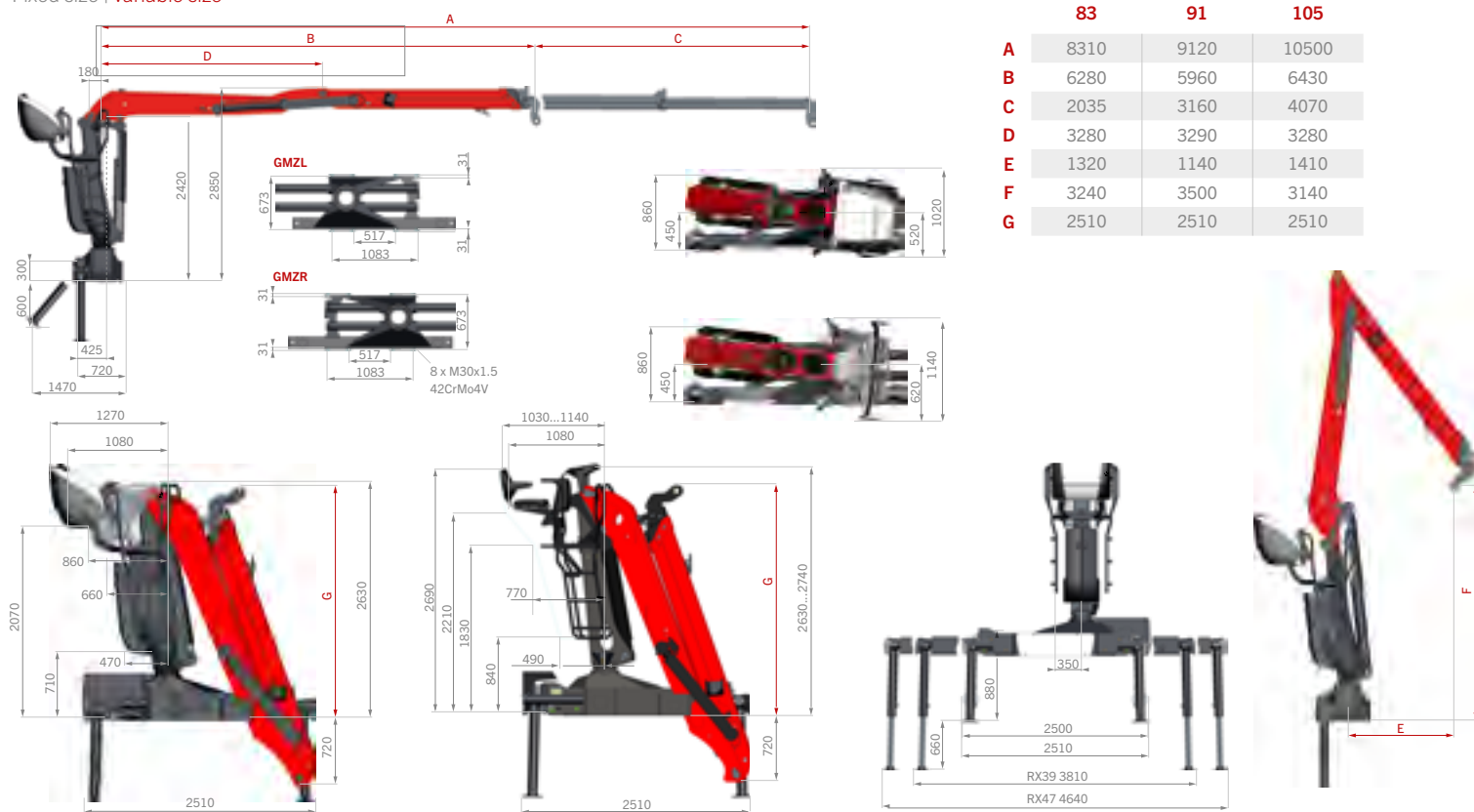
1. Outreach

2. Details

| | | M10Z | | | M10ZD | | | M12Z | | | M13Z | | | |
|-------------|----------------------------------|---------------|-------|------|-------|-------|------|------|-------|------|------|-------|------|------|
| | | 83 | 91 | 105 | 83 | 91 | 105 | 83 | 91 | 105 | 83 | 91 | 105 | |
| 83=8,30 m | Lifting moment net | [kNm] | 93 | 91 | 87 | 82 | 81 | 109 | 107 | 104 | 124 | 107 | 104 | |
| 91=9,10 m | Slewing torque net | [kNm] | 24 | | | 24 | | | 28 | | | 28 | | |
| 105=10,50 m | Slewing angle | [°] | 425 | | | 425 | | | 425 | | | 425 | | |
| | Max. Outreach | [m] | 8,3 | 9,1 | 10,5 | 8,3 | | 8,3 | 9,1 | 10,5 | 8,3 | 9,1 | 10,5 | |
| | Operating pressure | [bar] | 230 | | | 210 | | | 260 | | | 290 | | |
| | Recommended pump capacity | 1K [l/min] | 1x80 | | | 1x80 | | | 1x80 | | | 1x80 | | |
| | | 2K [l/min] | 2x70 | | | 2x70 | | | 2x70 | | | 2x70 | | |
| | | 1K LS [l/min] | 1x150 | | | 1x150 | | | 1x150 | | | 1x150 | | |
| | Dead weight without link/rotator | [kg] | 2340 | 2390 | 2470 | 2380 | 2430 | 2510 | 2380 | 2430 | 2510 | 2380 | 2430 | 2510 |
| | Master Drive | | | | | | | | | | | | | |
| | Dead weight without link/rotator | [kg] | 2220 | 2270 | 2350 | 2260 | 2310 | 2390 | 2260 | 2310 | 2390 | - | - | - |
| | Classic Drive | | | | | | | | | | | | | |

3. Dimensions

Fixed size | variable size



4. Lifting power

| | | 83 | | | | | | | |
|--|----------|------|------|------|------|------|------|------|-----|
| | | 3m | 4m | 5m | 6m | 7m | 8m | | |
| | M10Z83 | 3100 | 2320 | 1840 | 1510 | 1280 | 990 | | |
| | M10ZD83 | 2720 | 2060 | 1630 | 1340 | 1130 | 880 | | |
| | M12Z83 | 3630 | 2720 | 2160 | 1790 | 1510 | 1170 | | |
| | M13Z83 | 4050 | 3120 | 2470 | 2050 | 1740 | 1520 | | |
| | | 91 | | | | | | | |
| | | 3m | 4m | 5m | 6m | 7m | 8m | | |
| | M10Z91 | 3040 | 2270 | 1790 | 1480 | 1250 | 1070 | | |
| | M10ZD91 | 2680 | 2020 | 1590 | 1310 | 1100 | 950 | | |
| | M12Z91 | 3580 | 2680 | 2120 | 1750 | 1480 | 1280 | | |
| | M13Z91 | 4020 | 3050 | 2440 | 2020 | 1710 | 1480 | | |
| | | 105 | | | | | | | |
| | | 3m | 4m | 5m | 6m | 7m | 8m | 9m | 10m |
| | M10Z105 | 2900 | 2170 | 1730 | 1420 | 1190 | 1020 | 890 | 680 |
| | M10ZD105 | 2570 | 1950 | 1540 | 1250 | 1050 | 900 | 780 | 620 |
| | M12Z105 | 3470 | 2600 | 2070 | 1700 | 1430 | 1230 | 1080 | 800 |
| | M13Z105 | 3900 | 3010 | 2390 | 1960 | 1660 | 1430 | 1250 | 890 |

ML

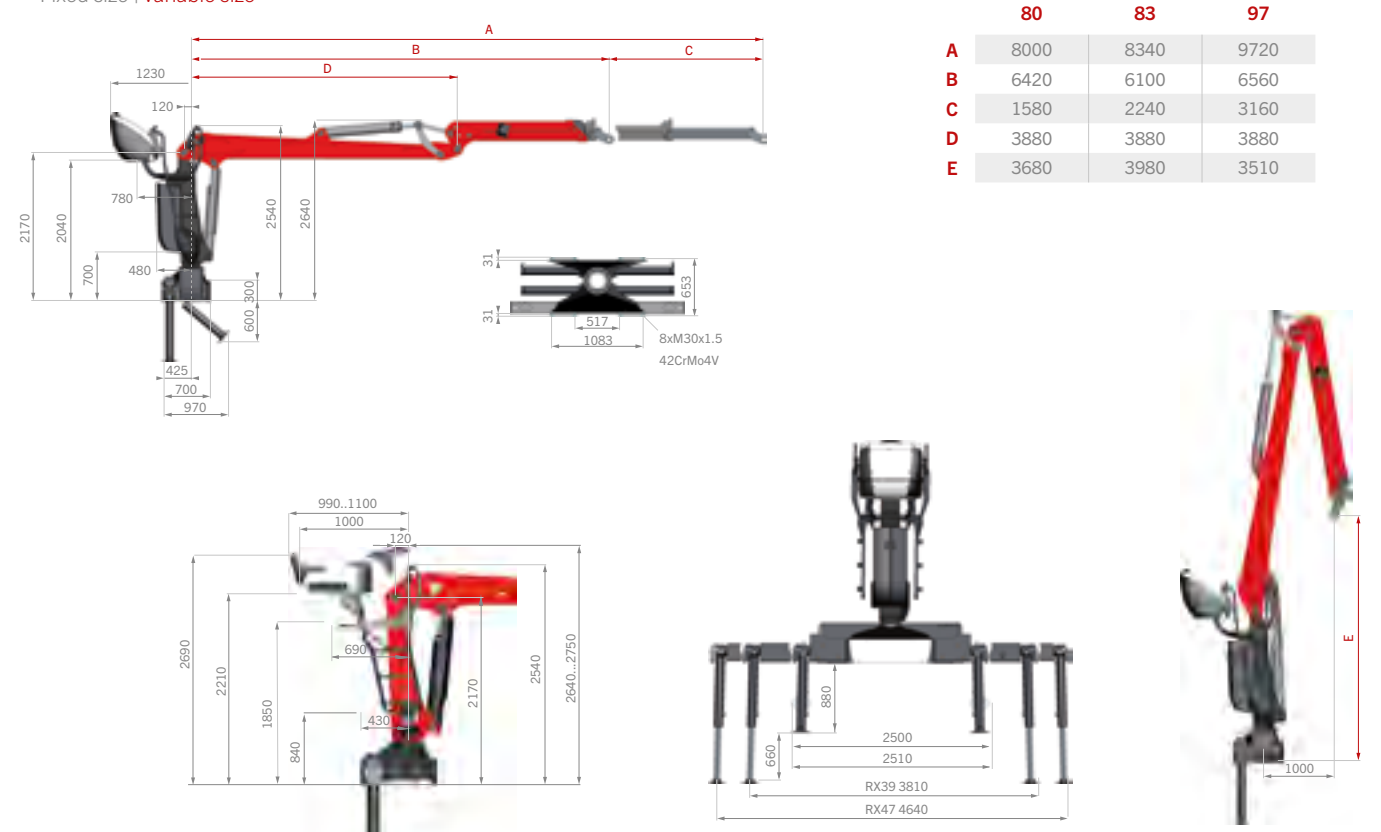
1. Outreach

2. Details

| | | M10L | | | M10LD | | | M12L | | | M13L | | | |
|-----------|----------------------------------|---------------|-------|------|-------|-------|------|------|-------|------|------|-------|------|------|
| | | 80 | 83 | 97 | 80 | 83 | 97 | 80 | 83 | 97 | 80 | 83 | 97 | |
| 80=8,00 m | Lifting moment net | [kNm] | 97 | 95 | 93 | 85 | 95 | 93 | 115 | 113 | 110 | 115 | 113 | 110 |
| 83=8,30 m | Slewing torque net | [kNm] | 24 | | | 24 | | | 28 | | | 28 | | |
| 97=9,70 m | Slewing angle | [°] | 425 | | | 425 | | | 425 | | | 425 | | |
| | Max. Outreach | [m] | 8,0 | 8,3 | 9,7 | 8,0 | 8,3 | 9,7 | 8,0 | 8,3 | 9,7 | 8,0 | 8,3 | 9,7 |
| | Operating pressure | [bar] | 220 | | | 200 | | | 250 | | | 280 | | |
| | Recommended pump capacity | 1K [l/min] | 1x80 | | | 1x80 | | | 1x80 | | | 1x80 | | |
| | | 2K [l/min] | 2x70 | | | 2x70 | | | 2x70 | | | 2x70 | | |
| | | 1K LS [l/min] | 1x150 | | | 1x150 | | | 1x150 | | | 1x150 | | |
| | Dead weight without link/rotator | [kg] | 2190 | 2210 | 2280 | 2260 | 2280 | 2350 | 2260 | 2280 | 2350 | 2260 | 2280 | 2350 |
| | Master Drive | | | | | | | | | | | | | |
| | Dead weight without link/rotator | [kg] | 2070 | 2090 | 2160 | 2140 | 2160 | 2230 | 2140 | 2160 | 2230 | - | - | - |
| | Classic Drive | | | | | | | | | | | | | |

3. Dimensions

Fixed size | variable size



4. Lifting power

| | | 80 | | | | | | |
|--|---------|------|------|------|------|------|------|------|
| | | 3m | 4m | 5m | 6m | 7m | 8m | |
| | M10L80 | 3230 | 2420 | 1930 | 1590 | 1360 | 1190 | |
| | M10LD80 | 2690 | 2140 | 1700 | 1400 | 1190 | 960 | |
| | M12L80 | 3830 | 2860 | 2270 | 1880 | 1600 | 1360 | |
| | M13L80 | 4290 | 3280 | 2620 | 2180 | 1860 | 1500 | |
| | | 83 | | | | | | |
| | | 3m | 4m | 5m | 6m | 7m | 8m | |
| | M10L83 | 3160 | 2370 | 1880 | 1560 | 1320 | 1150 | |
| | M10LD83 | 2640 | 2110 | 1670 | 1380 | 1170 | 1010 | |
| | M12L83 | 3770 | 2830 | 2240 | 1860 | 1580 | 1370 | |
| | M13L83 | 4230 | 3260 | 2590 | 2160 | 1840 | 1580 | |
| | | 97 | | | | | | |
| | | 3m | 4m | 5m | 6m | 7m | 8m | 9m |
| | M10L97 | 3070 | 2320 | 1820 | 1500 | 1270 | 1090 | 960 |
| | M10LD97 | 2550 | 2050 | 1620 | 1320 | 1120 | 960 | 830 |
| | M12L97 | 3690 | 2760 | 2190 | 1800 | 1530 | 1320 | 1170 |
| | M13L97 | 4130 | 3200 | 2540 | 2100 | 1780 | 1540 | 1240 |

YOUR PARTNER FOR THE FUTURE

Each and every PALFINGER EPSILON product is far more than just the sum of its parts. Throughout the entire company we adhere to the very latest standards, and on behalf of our customers we strive unceasingly to provide sustainable, innovative, bespoke solutions. We consider customer satisfaction to be of the utmost importance; so you can rely on PALFINGER EPSILON to deliver long-lasting, low-maintenance products that are economical to run in terms of costs and the consumption of resources.

We are constantly working on the development of solutions to offer long-term viability. We give our staff at the development centre plenty of encouragement and set them plenty of challenges; and today's reconstruction work on the company headquarters is taking place to guarantee we have the necessary capacity to serve customers in the years to come.

Working in cooperation with our partners we continue to do everything within our power to provide innovative, custom-built products that deliver the best possible solutions for your needs.

PALFINGER EPSILON.



New development centre and assembly

EPSILON KRAN GMBH
Christophorusstraße 30
5061 Elsbethen-Glasenbach | Austria
Tel +43 662 629548-0
epsilon@palfinger.com

KP-PR081 is meant for international use. The availability of some models and the model and special equipment may vary from country to country. EPSILON reserves the right to change design or technical specification at any time without prior notice. Any changes would not be applied retrospectively to previously sold units. Information, description and illustrations are correct at time of going to print, but may also be changed without prior notice. Illustrations may show certain country specific executions and special equipment, and therefore may not be complete standard execution. Measure data without obligation. Lifting capacity presentations are standard illustrations and don't correspond the optimize boom position, where the maximum lifting capacity can be reached.