

SEGMENT BROCHURE

LANDSCAPING - TREE CUTTING APPLICATION

LIFETIME EXCELLENCE



PALFINGER IN LANDSCAPING

WORKMAN BASKET

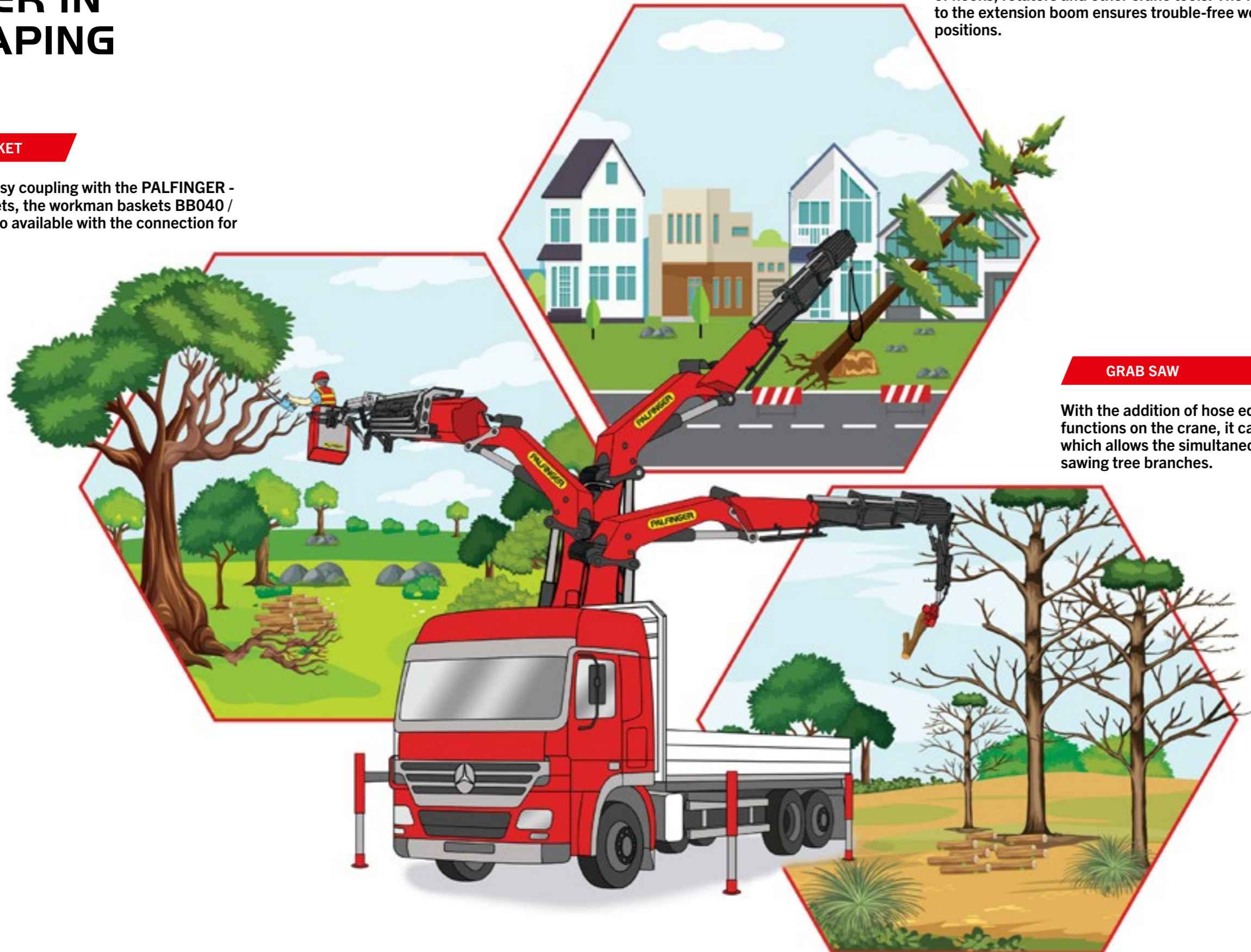
To ensure quick and easy coupling with the PALFINGER - EN280 workman baskets, the workman baskets BB040 / BB041 / BB042 are also available with the connection for the MFA.

LOAD ATTACHMENT

The MFA load attachment is suitable for the simple connection of hooks, rotators and other crane tools. The increased distance to the extension boom ensures trouble-free working in all arm positions.

GRAB SAW

With the addition of hose equipments and hydraulic functions on the crane, it can be fitted with a grab saw which allows the simultaneous operation of grappling and sawing tree branches.



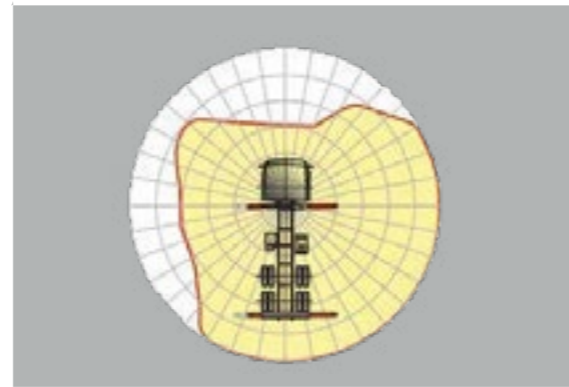
FEATURES AND OPTIONS

10 Highlights



Overload Protection System
Paltronic 50 / 150

With the PALTRONIC 50 and PALTRONIC 150, PALFINGER offers the latest protection system which protects the crane and its attachments against overloading. It serves as the brain of the crane which allows direct communication with the crane and displays utilization and overload directly on the operator's handset. The quick and easy troubleshooting through the display of the error code on the control panel allows for easy maintenance and service-friendliness.



HPSC
Maximum utilisation of the working range

The High Performance Stability Control (HPSC) is a fully proportional system that monitors the stability of the crane vehicle. Sensors for proportional length measurement located in the stabilizers make their positioning fully variable. As a result, it is possible to calculate the permissible working range for any for any stabilizer situation.



AOS

Active Oscillation Suppression (AOS) is a patented assistance system from PALFINGER, which compensates vibrations and shocks in the vertical direction during crane operation. This reduces backswing to a minimum and ensures a consistently high standard of safety when transporting a load or emptying big bags.



Dual Power System (DPS-P)

The Dual Power System enables a significant increase of lifting capacity on the fly jib. The system shows its strengths in the TEC crane with fly jib, especially with large outreach, and increases the areas of application. While DPS-Plus recognizes two positions of the last extension boom and uses two pressure ranges.



Additional hose equipment on extension booms
CODE 4

With the hose equipment, it is very easy to connect additional attachments (fly-jib, rotator, grapple saw!). The hoses are installed and protected in the hose tray. Since the hoses are assembled in sections, maintenance and servicing of the hose equipment is hassle free.



J04

Additional hose equipment on fly jib (for grapple saw)



Fly-jib
(PJ080; PJ125)

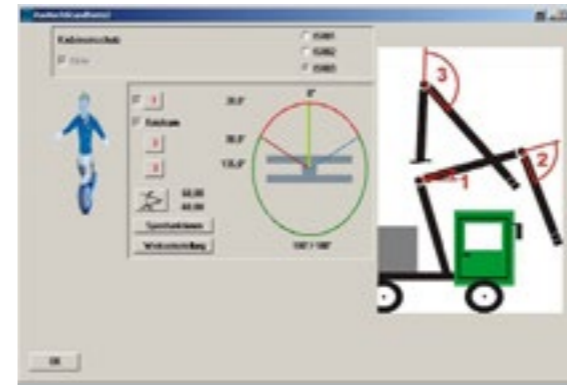
A fly-jib system extends the working range of the crane and thereby increases the possible areas of application. The same crane can be used with or without the fly-jib and can therefore be adapted for different applications. Applications with additional attachments (grabber, rotator) and/or cable winch are possible. The higher the quality of the technical configuration of the fly-jib, the more efficient the application of the crane regarding the lifting power and outreach. The high competence of PALFINGER in light-weight construction is applied here directly in performance.



PALcom P7 (TEC/SH)
Communication with the operator

The new PALcom P7 features a modern, ergonomic design. The centrally located knob "PALdrive" and a large colour display enables easy and safe operation.

Scanreco controller is also available for EH cranes.



CPS (Cabin Protection System)

PALTRONIC 50/150 has the possibility to protect the area of the cabin. This function is called "cabin protection". This function is not dependent on any digital input, the crane is always prevented from entering the cabin area. This area is set-up and activated separately using our own diagnostic tool.



EN280 CE-Conformed Workman Basket

With the EN280 CE-Conformed Workman Basket, crane stability control systems such as HPSC and HPSC-L are able to retain their full functionality when using a workman basket, complementing with our High Performance SH and TEC range.

PULL IN PARTS

PALFINGER offers suitable pull in parts for the mechanical connection of a NON-CE workman basket on the crane. The quick change system allows a convenient coupling and uncoupling of the workman basket on the crane.

Code	Quick change device for workman basket	Quick change device with	Quick change device without	Inside dimensions A [mm]	Extension boom B [mm]	Use	Weight [kg]
BB040ES01AU	+BZ456	●		123	62		23
BB013-10V1			●	123	62		22
BB040ES02AU	+BZ456	●		155	79		26
BB013-15V1			●	155	79		22
BB040ES03AU	+BZ456	●		188	98	crane > 30mt	26
BB040ES04AU	+BZ456	●		188	98	crane > 30mt	26
BB013-16V1			●	188	96		28
BB0403W05AU	+BZ456	●		224	120	crane	29
BB040ES13AU	+BZ456	●		224	120	fly-jib	42
BB013-17AV1			●	224	116		30
BB040ES06AU	+BZ456	●		260	138	crane	30
BB040ES14AU	+BZ456	●		260	138	fly-jib	43
BB013-18V1			●	260	138		33
BB040ES08AU	+BZ456	●		296	158		34
BB040ES09AU	+BZ456	●		237	146		38
BB040ES15AU	+BZ456	●		282	170		41
BB040ES16AU	+BZ456	●		327	198		43

EQUIPMENT RECOMMENDATION

Complete your workman basket with our personal safety system, which is mandatory in many countries. The fall protection device and the safety harness recommended by PALFINGER offer optimum protection and wearing comfort.



PROFESSIONAL EQUIPMENT (PEC)

To ensure a safe lowering of the workman basket in case of failure of the conventional hydraulic system, an emergency operation of the workman basket is also recommended for NON-CE cranes.

- EN280 Workman Basket
- Locally fabricated non-CE Workman Basket
- Grapple Saw
- Installing hoses on the extension booms for spraying of fertilizers

Code	Description
KMG00210A	workman basket emergency-drive kit for constant-pump cranes 24 V – 3 kW – max. 270 bar
KMG00211A	workman basket emergency-drive kit for variable-pump cranes 24 V – 3 kW – max. 270 bar

The emergency unit is also available as a loose part

Code	Description
EP1982	Emergency drive 24 V – 3 kW – max. 270 bar
EP2022	Emergency drive 12 V – 3 kW – max. 270 bar

ATTENTION: The drive is exclusively designed for emergency and not for standard operation. The hydraulic and electrical connection must be made in accordance to the installation guidelines of PALFINGER. Please make sure that the specifications of the carrier vehicle are adhered to! When making electrical connections, pay attention to the appropriate cable cross-sections.

It is possible that adaptations are necessary on the pull in part on some crane versions.



WORKMAN BASKET

Fall protection device (length 1.8m) according to EN 360

- Revision-free in the whole EU
- With fall-indicator
- Especially for workman basket operation according to EN 280



GRAPPLE SAW

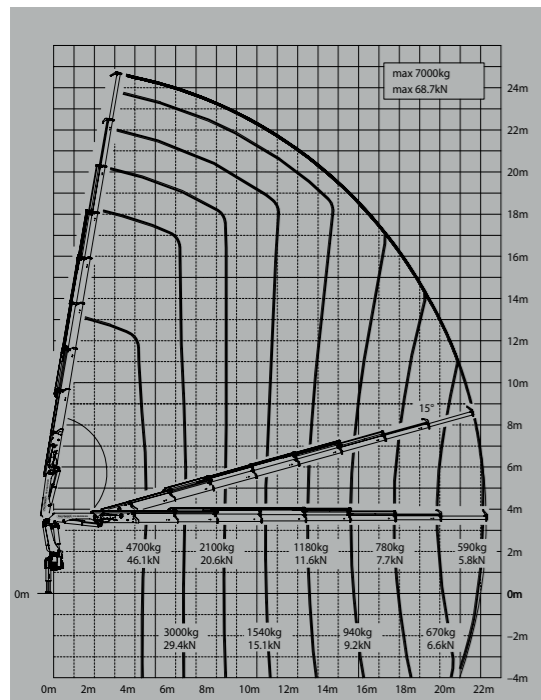
- Suitable for larger cranes with longer outreach
- Able to safely cut tree branches via remote control and full visibility
- Holds on to fallen branch after cutting

LIFTING CHARTS

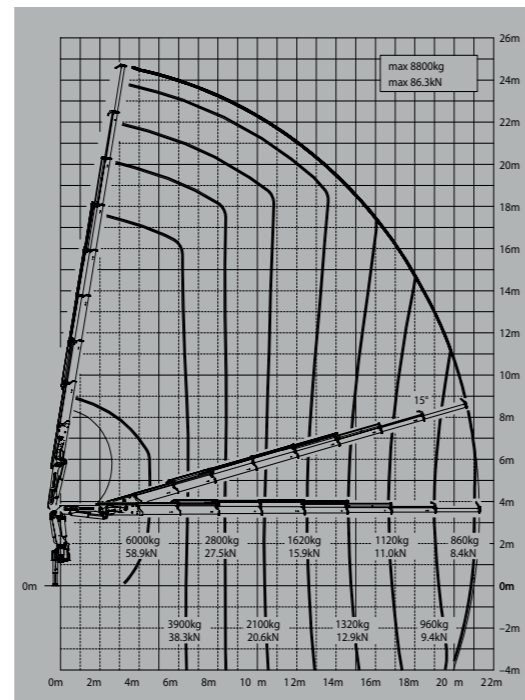
DATA TABLE

More lifting power when it is really needed.

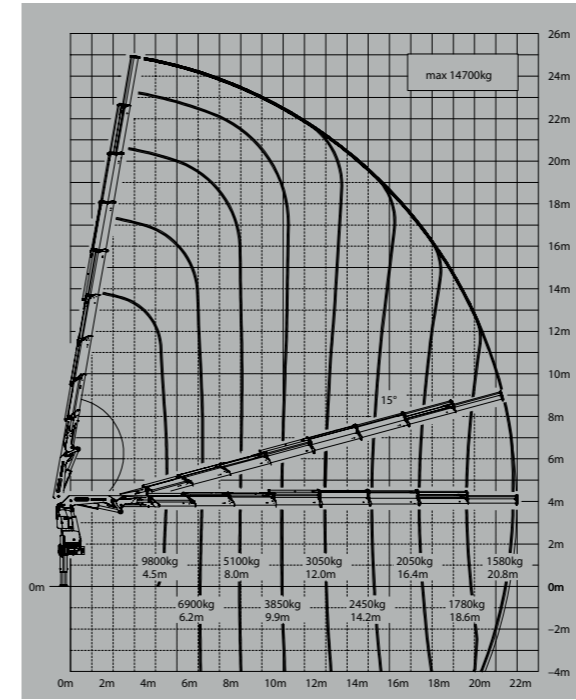
PK 26002 EH G



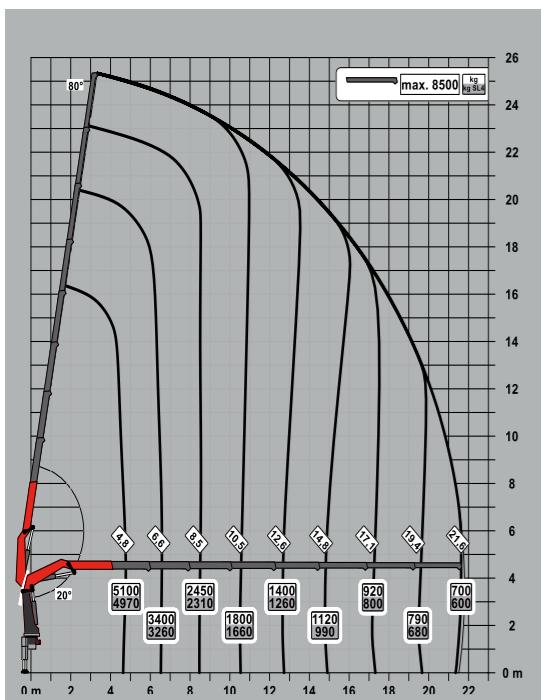
PK 33002 EH G



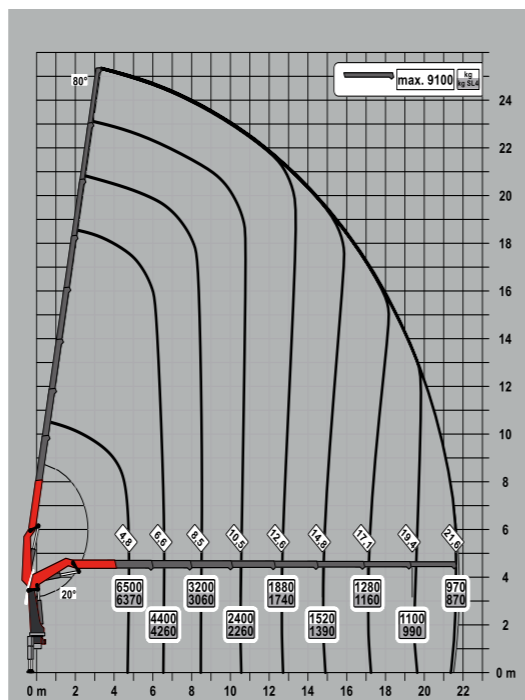
PK 53002 SH G



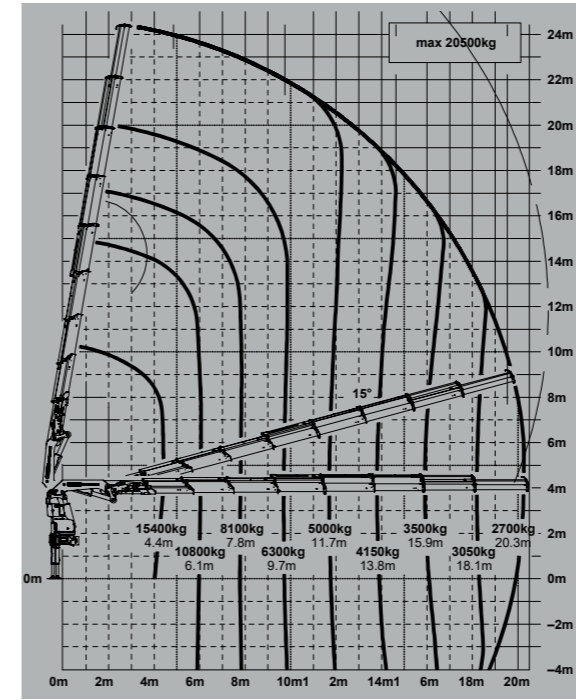
PK 300 TEC G



PK 370 TEC G



PK 78002 SH G



Lifting capacities

max.	7,000 kg	PK 26002 EH G
23,1 m	510 kg	
21,1 m	590 kg	
19,0 m	670 kg	
16,8 m	780 kg	
14,7 m	940 kg	
12,6 m	1,180 kg	
10,5 m	1,540 kg	
8,4 m	2,100 kg	
6,5 m	3,000 kg	
4,6 m	4,700 kg	

max.	8,500 kg	PK 300 TEC G
21,6 m	700 kg	
19,4 m	790 kg	
17,1 m	920 kg	
14,8 m	1,120 kg	
12,6 m	1,400 kg	
10,5 m	1,800 kg	
8,5 m	2,450 kg	
6,6 m	3,400 kg	
4,8 m	5,100 kg	

max.	7,000 kg	PK 33002 EH G
23,1 m	510 kg	
21,1 m	590 kg	
19,0 m	670 kg	
16,8 m	780 kg	
14,7 m	940 kg	
12,6 m	1,180 kg	
10,5 m	1,540 kg	
8,4 m	2,100 kg	
6,5 m	3,000 kg	
4,6 m	4,700 kg	

max.	9,100 kg	PK 370 TEC G
21,6 m	970 kg	
19,4 m	1,100 kg	
17,1 m	1,280 kg	
14,8 m	1,520 kg	
12,6 m	1,880 kg	
10,5 m	2,400 kg	
8,5 m	3,200 kg	
6,6 m	4,400 kg	
4,8 m	6,500 kg	

max.	6,500 kg	PK 53002 SH G
21,6 m	970 kg	
19,4 m	1100 kg	
17,1 m	1280 kg	
14,8 m	1520 kg	
12,6 m	1880 kg	
10,5 m	2400 kg	
8,5 m	3200 kg	
6,6 m	4400 kg	

max.	14,700 kg	PK 78002 SH G
25,0 m	600 kg	
23,0 m	900 kg	
20,8 m	1,580 kg	
18,6 m	1,780 kg	
16,4 m	2,050 kg	
14,2 m	2,450 kg	
12,0 m	3,050 kg	
9,9 m	3,850 kg	
8,0 m	5,100 kg	
6,2 m	6,900 kg	
4,5 m	9,800 kg	

PALFINGER ASIA PACIFIC PTE LTD
3 International Business Park
Nordic European Center | #05-25/26
609927 | Singapore
T: +65 6591 9191
asia@palfinger.com

Cranes shown in the leaflet are partially optional equipped and do not always correspond to the standard version. Country-specific regulations must be observed. Dimensions may vary. Subject to technical changes, errors and translation mistakes.