

**CONSTRUCTION**

**LOGISTICS SOLUTIONS –  
BUILDING MATERIALS  
BRICKS / BLOCKS /  
PRECAST**

**LIFETIME EXCELLENCE**



# VERSATILE BUILDING MATERIALS HANDLING

## BRICK/BLOCK

Concrete and clay products has been handled by manual labors which damaged edge during handling and had logistics issues like delays in delivery resulting in less trips. The truck mounted crane with Brick Grabber attachment will handle these products during loading, transporting, unloading and stacking vertically.

## PALLET FORK

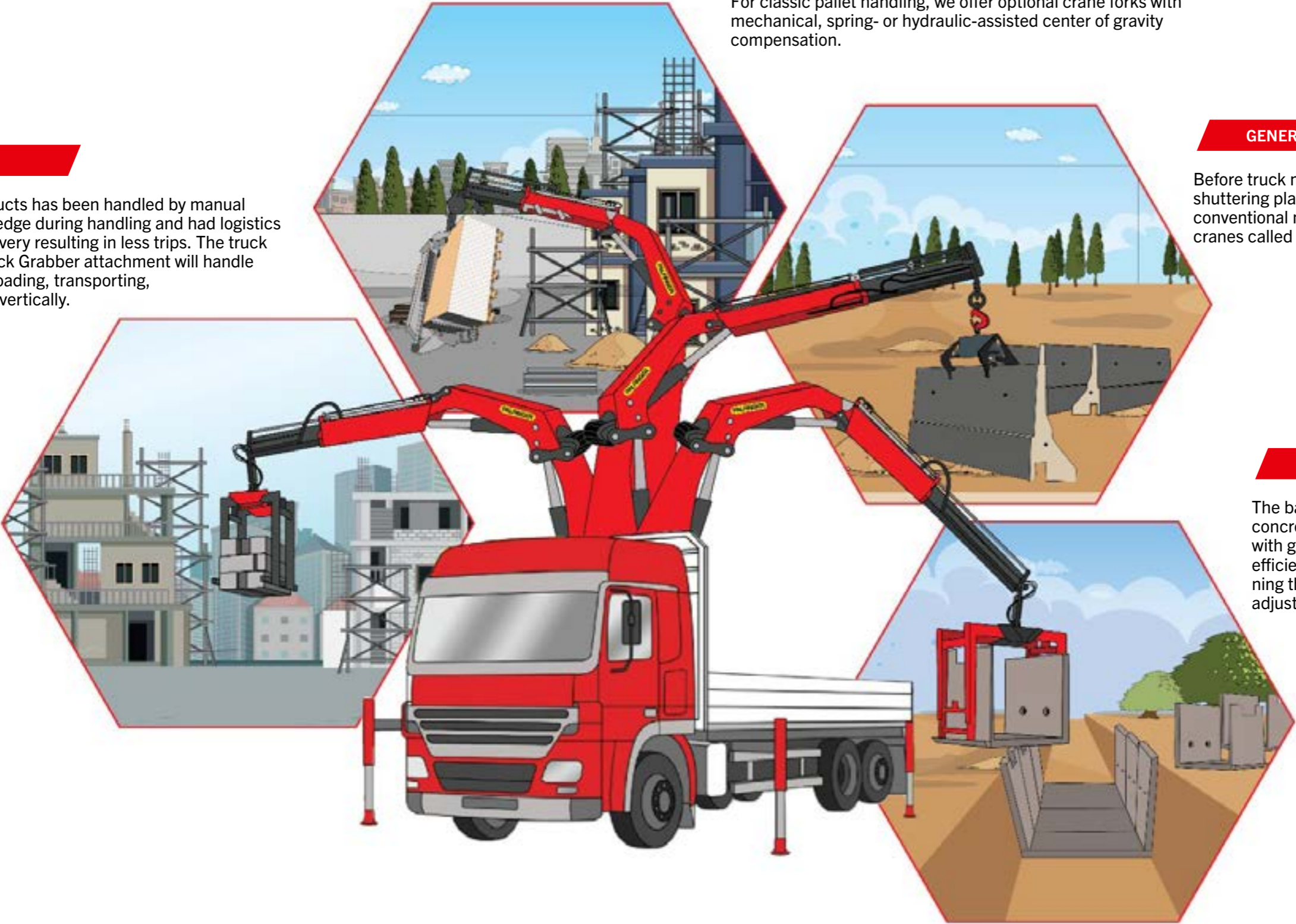
Equipped with the right crane fork, your crane becomes an all-rounder for the handling of palletized and packaged goods. For classic pallet handling, we offer optional crane forks with mechanical, spring- or hydraulic-assisted center of gravity compensation.

## GENERAL MATERIALS

Before truck mounted cranes was introduced, friction slabs, shuttering plates, piling steel cages have been handled by conventional method using local manufactured Pick & Carry cranes called Hydra or Truck cranes for heavier load.

## CONCRETE PRECAST

The barrier lifter is the perfect tool for manipulating concrete precast. The mechanical clamping system with gripping jaws made of diamond carbide enables efficient one-person operation. By simply repositioning the locking pin various clamping ranges can be adjusted.



# EVERY TECHNICAL DETAIL IS RIGHT

## 6 Highlights



### Load Holding Valves

Load-Holding valves prevent the load from dropping in an uncontrolled manner. They are fitted as a standard part on the elevating boom cylinders, extension cylinders and stabilizer cylinders. The valves are positioned in such a way that they are protected from accidental damage.



### High Speed Extension For efficient assignments

The High Speed Extension speeds up the extension boom system. Crane works faster and more efficiently.



### Internally Routed Oil Ducts

Maximum protection thanks to compact design

The internally routed oil passages make it possible to have a compact design for the extension system and ensure perfect protection from damage.



### Outrigger width For optimum stability

The 4.8 m (15' 9") outrigger system installed as standard ensures good stability. As an option a 6.6 m (21' 9") telescopic outrigger is available. The pipework to the support cylinders is internally routed in the outriggers, providing a high level of protection from damage at all times. On request, the outriggers can be supplied with support cylinders that swivel up hydraulically through 180°.



### Ergonomic crane control All Information at a glance

The operating levers for all crane functions are ergonomically arranged on the console. This provides comfortable, efficient working. The control console is mounted so that it is easy to service.



### Hose equipment for accessories Versatile and user-friendly

With this option you can provide the oil supply to accessories. The hoses are routed in compact troughs and plastic link chains. They are therefore very well protected.

# EQUIPMENT RECOMMENDATION

Our customers are professionals, and professionals are only satisfied with the best tools. Our mission is to give you the tools that make your job faster, more efficient and safer. This can only be achieved with a reliable tool that is perfectly matched to the loader crane and application.



### PARALLEL OPENING GRAPPLE

Versatile

- Highest Security
- Fixed or adjustable plunge depths
- Due to the large number of different pressure rails, the brick stack grapple can be perfectly matched to the material to be manipulated.



### SCISSOR OPENING GRAPPLE

Compact

- Compact design
- Fixed plunge depth
- Versatile use with opening widths from 40 – 1500 mm
- Pick up of single stones and big bags possible



### PALLET FORK

Comfortable

- Low-maintenance and time-saving solution
- Easy and safe picking up of pallets because of the self-adjusting center of gravity compensation
- Multifunctional use for pallet handling thanks to simple adjustment of effective height and tine distance
- Easy threading through the narrow forged tines



### BARRIER LIFTER

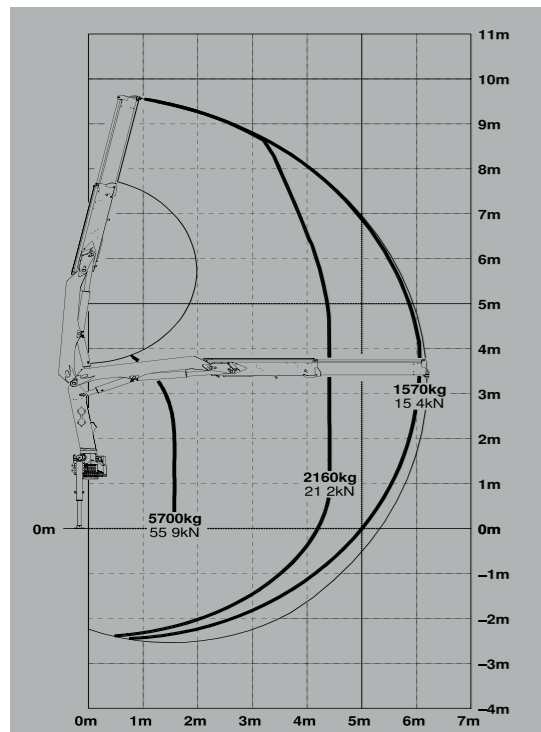
The barrier lifter is the perfect tool for manipulating concrete barriers. The mechanical clamping system with gripping jaws made of diamond carbide enables efficient one-person operation. By simply repositioning the locking pin various clamping ranges can be adjusted. Since no oil supply is required for this system, it is cost-effective to retrofit almost every crane.

## LIFTING CHARTS

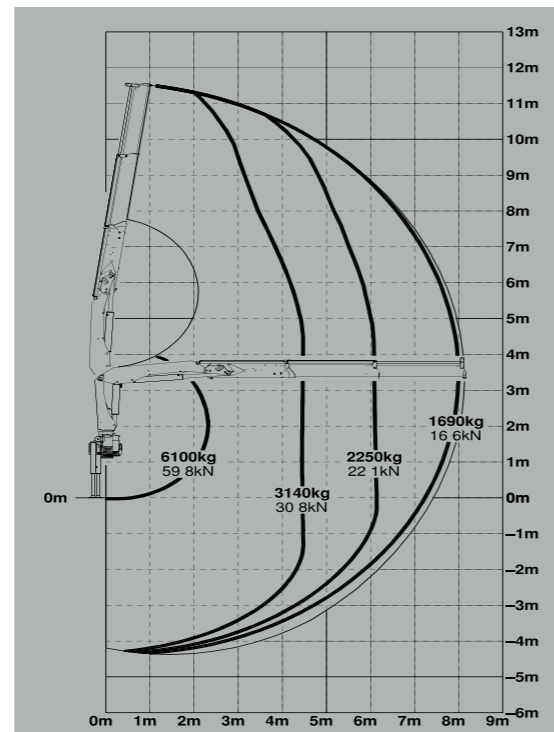
# DATA TABLE

More lifting power when it is really needed.

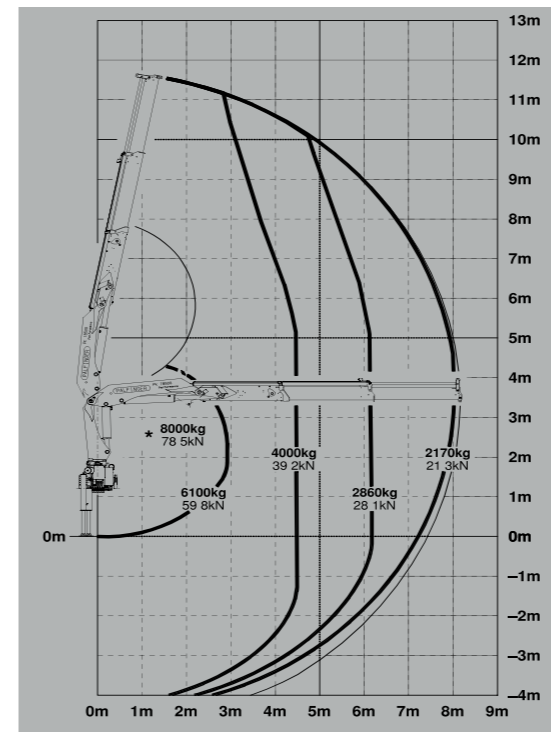
**PK 10000 STD**



**PK 15500 A**



**PK 18500 A**



## LIFTING CAPACITIES

max.			PK 10000 STD
4.4 m	2160 kg	4760 lbs	
6.1 m	1570 kg	3460 lbs	

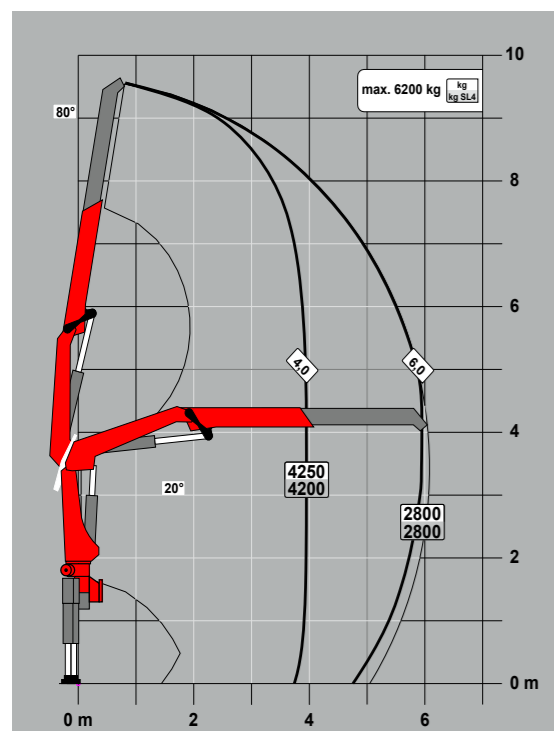
max.			PK 11.001 SLD 1 STD
3.7 m	2750 kg	6060 lbs	
5.6 m	1840 kg	4055 lbs	

max.			PK 15500 A
4.5 m	3140 kg	6920 lbs	
6.1 m	2250 kg	4960 lbs	
8.0 m	1690 kg	3730 lbs	

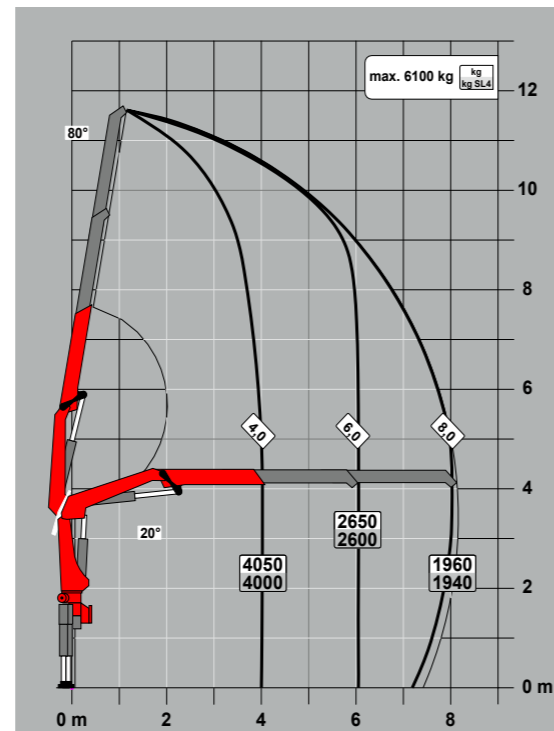
max.			PK 17.001 SLD 1 A
4.0 m	4050 kg	8930 lbs	
6.0 m	2650 kg	5840 lbs	
8.0 m	1960 kg	4320 lbs	

max.			PK 18500 A
4.5 m	3970 kg	8750 lbs	
6.1 m	2860 kg	6310 lbs	
8.0 m	2170 kg	4780 lbs	

**PK 11.001 SLD 1 STD**



**PK 17.001 SLD 1 A**



**DATA TABLE**

<b>PALFINGER Model</b>		<b>PK 10000 STD</b>		<b>PK 11.001 SLD 1 STD</b>		<b>PK 15500 A</b>	<b>PK 17.001 SLD 1 A</b>	<b>PK 18500 A</b>	<b>Approx Weight of Each Brick in KGs</b>
<b>Description</b>		12 -19 Ton GVW truck with 4200 mm Wheelbase	12 -19 Ton GVW truck with 4200 mm Wheelbase	12 -19 Ton GVW truck with 4200 mm Wheelbase	28 Ton GVW truck with 4900 mm Wheelbase	28 Ton GVW truck with 4900 mm Wheelbase	28 Ton GVW truck with 4900 mm Wheelbase	28 Ton GVW truck with 4900 mm Wheelbase	
<b>4" Solid Concrete Blocks</b>  100 H x 200 W x 400 L	<b>4" Block per bundle</b>	72	72	84	84	72	96	96	17
	<b>No. of Bundle</b>	10	19	8	19	19	19	19	
	<b>Total Blocks in Truck</b>	720	1368	672	1596	1368	1824	1824	
	<b>Bundle Dimensions</b>	600 H x 800 W x 1200 L	600 H x 800 W x 1200 L	700 H x 800 W x 1200 L	700 H x 800 W x 1200 L	600 H x 800 W x 1200 L	800 H x 800 W x 1200 L	800 H x 800 W x 1200 L	
<b>6" Solid Concrete Blocks</b>  150 H x 200 W x 400 L	<b>6" Block per bundle</b>	48	48	60	60	48	60	72	25
	<b>No. of Bundle</b>	10	19	8	19	19	19	19	
	<b>Total Blocks in Truck</b>	480	912	480	1140	912	1140	1368	
	<b>Bundle Dimensions</b>	600 H x 800 W x 1200 L	600 H x 800 W x 1200 L	750 H x 800 W x 1200 L	750 H x 800 W x 1200 L	600 H x 800 W x 1200 L	750 H x 800 W x 1200 L	900 H x 800 W x 1200 L	
<b>8" Solid Concrete Blocks</b>  200 H x 200 W x 400 L	<b>8" Block per bundle</b>	36	36	48	48	36	48	48	32
	<b>No. of Bundle</b>	10	19	8	19	19	19	19	
	<b>Total Blocks in Truck</b>	360	684	384	912	684	912	912	
	<b>Bundle Dimensions</b>	600 H x 800 W x 1200 L	600 H x 800 W x 1200 L	800 H x 800 W x 1200 L	800 H x 800 W x 1200 L	600 H x 800 W x 1200 L	800 H x 800 W x 1200 L	800 H x 800 W x 1200 L	
<b>Flyash &amp; Clay Brick</b>  75 H x 75 W x 225 L	<b>Flyash &amp; Clay Brick</b>	308	308	396	396	352	440	440	3.5
	<b>No. of Bundle</b>	10	23	10	23	23	23	23	
	<b>Total Blocks in Truck</b>	3080	7084	3960	9108	8096	10120	10120	
	<b>Bundle Dimensions</b>	525 H x 825 W x 900 L	525 H x 825 W x 900 L	675 H x 825 W x 900 L	675 H x 825 W x 900 L	600 H x 825 W x 900 L	750 H x 825 W x 900 L	750 H x 825 W x 900 L	

PALFINGER INDIA PRIVATE LIMITED  
37, Varadharajapuram, Nazarethpet,  
Poonamallee, Chennai , 600123  
T: +91 9619221202 / +91 9500077043  
Toll free : 1800 309 5699  
sales-pci@palfinger.com

Cranes shown in the leaflet are partially optional equipped and do not always correspond to the standard version. Country-specific regulations must be observed. Dimensions may vary. Subject to technical changes, errors and translation mistakes.