

PALFINGER

# PK 1050 TEC

STRONG, STRONGER, THE STRONGEST

The TEC range was built from the best ideas. Now PALFINGER is going one step further: Our know-how with all the advantages of previous crane ranges has been further developed into a completely new generation that supports PALFINGER customers even better with new assistance systems.

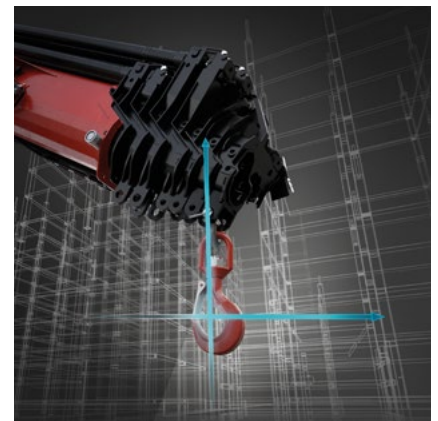
PALFINGER



The unprecedented outreach of 37 meters in this meter ton class is just the beginning. In addition to the unmistakably elegant and functional design elements, the completely new TEC crane comes with a bundle of new functions and assistance systems. All this is made possible by the completely new Paltronic 180 and the new control slide valve LX-6. The teardrop-shaped P-Profile, the trademark of the PALFINGER TEC Crane, paired with the DUAL POWER SYSTEM CONTINUOUS (DPS-C) ensures the availability of the maximum lifting power in Fly-Jib mode up to the last extension. This is ideal for operations that require a long range, like roof work. It is also a premiere for Smart Control: With the PK 1050 TEC, it is integrated in a crane of the 100 meter ton class for the first time and together with the memory position and the leveling assistant, it makes the crane operating even smarter and, above all, easier.



**SMART CONTROL**, the innovative and easier way to control the crane tip horizontally and vertically with just one lever movement, even when a heavy load is hooked, Smart Control compensates the crane deflection.



**MEMORY POSITION** is an assistance system that can memorize and repeat crane positions. It remembers the crane positions defined by the operator, including the fly jib, and moves to them semi-autonomously. Up to four positions can be saved simultaneously. The entire crane geometry is stored and can be viewed in the geometry page view on the radio remote control. This shows both the direction and the distance it takes to reach one of the memorized positions. The Memory Position can also be optimally used in combination with Smart Control for even more efficient operations. The new function is particularly suitable for repeating applications. Sudden occurring obstacles can also be avoided.

The **LEVELING ASSISTANT** simplifies the stabilizing process overall by optimally leveling the crane and additional stabilizers. The process itself takes place through pulsating movements of the stabilizer cylinders. The leveling assistant saves up to 80 percent time when leveling the vehicle. There are two versions, „steep position“ or „HPSC“, to achieve the best vehicle slope through the Leveling Assistant depending on the operation.

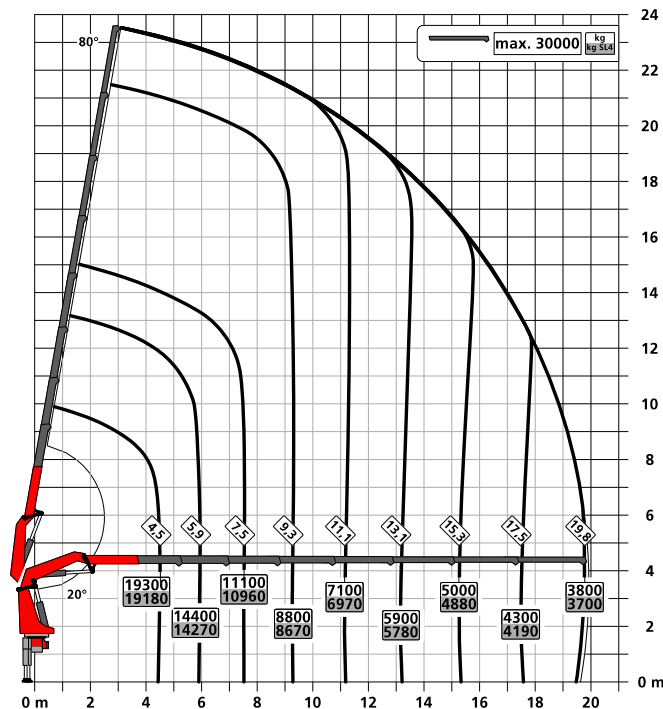
## TECHNICAL DATA

Max. lifting moment:	95.0 mt
Max. hydraulic outreach:	22.4 m
Max. outreach with fly-jib and mech. extension (JV2):	37.2 m
Slewing angle:	continuous
Dead weight (std.):	7,480 kg

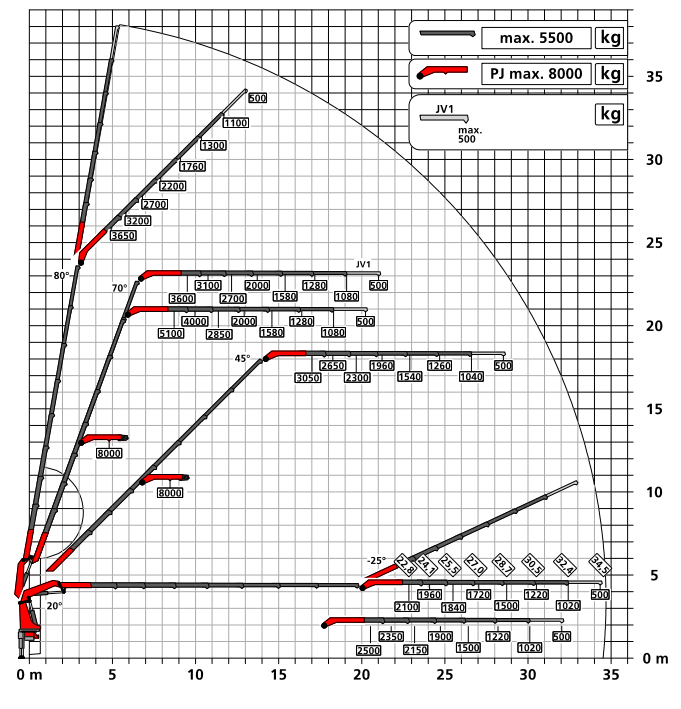


## LIFTING CAPACITY DIAGRAMS

Version G



Version G PJ 150 E



Cranes shown in the leaflet are partially optional equipped and do not always correspond to the standard version. Country-specific regulations must be observed. Dimensions may vary. Subject to technical changes, errors and translation mistakes