

FIXED BOOM CRANE RANGE



BASIC DATA

CE Declaration	yes
UKCA - Marking	yes
Design standard	EN 13852-3
Safety of Machinery	EN13849-1 (Performance Level C)
Corrosion protection crane structure	CX (offshore) - EN12944-9 Thermally spray metalized + 3-layer coating Stainless steel for all pins, bushings & hook-on points
Lifting capacity (nominal)	1000kg SWL / 2,0m SWH
Lifting capacity (exceptional)	3000kg SWL / 1,0m SWH

OPTIONS

Manual slewing	PF 120, PF 160
Electric slewing	PF 120, PF 160, PF 200
Additional load limit (single line operation)	2 nd load limit single line operation
Exceptional lift (double line operation)	3000kg SWL / 1,0m SWH
Additional load limit (double line operation)	2 nd load limit double line operation
Slewing end mechanical	270° - 340° (adjustable in 5° steps)
Slewing end electrical	0° - 330° (adjustable by parameter setting)
Protected slewing area electrical	0° - 330° (adjustable by parameter setting)
Slack wire detection at rope winch	yes
Flood light	yes
Pivoting bar (working load limit 3000kg)	yes
Power supply (V/Hz)	400V / 50Hz 400V / 60Hz 480V / 60Hz 690V / 50Hz 690V / 60Hz
Type of Power Supply	CEE Plug at Crane base Power Supply Cable

HIGHLIGHTS

- Highest safety standard
- Highest corrosion protection class
- Modular boom design 3,0 - 7,0m
- Plug & play solution
- Quick and easy installation
- Minimized maintenance effort

OUTREACH BASED ON CRANE MODEL

PF 120	3,0m 3,5m 4,0m
PF 160	4,5m 5,0m 5,5m
PF 200	6,0m 6,5m 7,0m

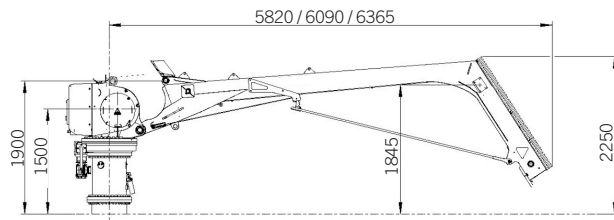
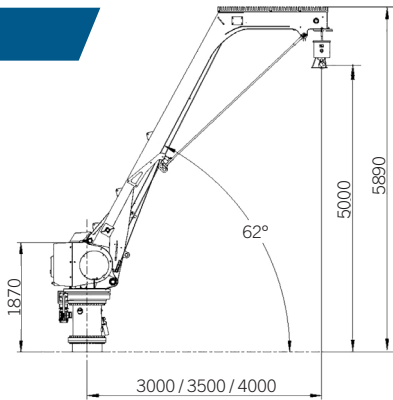
REMOTE CONTROL

Supply voltage	3xAA rechargeable batteries
Frequency band	2,4GHz
Operational time	≤40h
Operating range	≤100m
Weight (including batteries)	400g

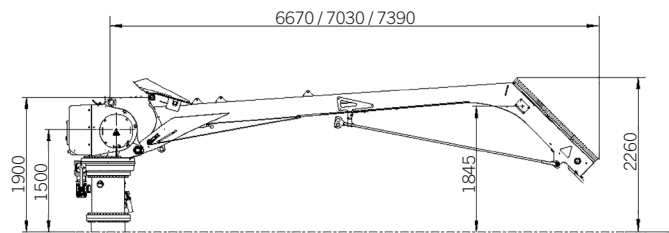
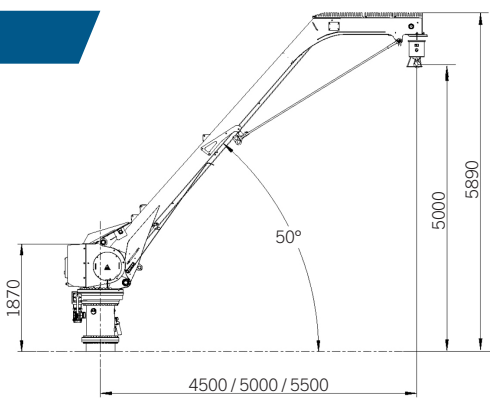


WORKING & SERVICE POSTION

PF 120



PF 160



PF 200

