

# **TAIL LIFTS FOR LIGHT COMMERCIAL VEHICLES**

**LIFETIME EXCELLENCE**



# WHY PALFINGER TAIL LIFTS

**For more than 50 years PALFINGER tail lifts have successfully facilitated the safe loading and unloading of trucks and vehicles.**

**With over 40 different models and 170 model configurations, PALFINGER serves capacities from 500 to 4,000 kg.**

PALFINGER tail lifts are known to be extremely reliable products that meet the strictest safety standards. They are highly adaptable due to customized software solutions and come with a comprehensive 24/7 service package. We continuously meet these high expectations with every new product we add to our portfolio.

When developing a new tail lift, PALFINGER always pays close attention to the needs of end-users and body builders alike. Operators want a tail lift to be reliable, robust and lightweight, while body builders demand solutions that are easy to install and minimize fitting costs. Our light commercial range ticks these important boxes.

The recent surge in delivery volumes goes hand-in-hand with increased responsibility. The focus in the truck industry is shifting to emissions reduction, weight saving, and fleet electrification.

PALFINGER is ready to facilitate this transition to sustainability and increased efficiency.

Our light commercial vehicle range is diverse and offers:

- Ultra-light weight to maximize payload and reduce carbon footprint
- Easy and quick installation thanks to customized mounting brackets
- Robust design which reduces downtime to the absolute minimum
- Flexible solutions to optimize your vehicle operation
- Customized software solutions to adapt your lift the way you want it
- Option of optimal 4 sides seal kit eliminating the need for rear doors further reducing weight and time to access your goods
- Slim control panel providing ergonomic access to the operations controls on the side of the vehicle
- Options such as ball head coupling and Bluetooth remote control



# A TAIL LIFT FOR ANY NEED

We understand that each customer is unique and expectations are always high when it comes to meeting varied needs. PALFINGER has a complete range of tailor made solutions for any need on your light commercial vehicle. 3 types of lifts are available to suit your demand:




Below you will find a table that gives you a better differentiation and if you already know the capacity and some specifications of the needed tail lift, a comprehensive comparison of all tail lifts of that capacity is available on the next pages.

**Our VAN solution is versatile, weight optimized, easy to use and extremely reliable. They are the ideal partner for any of your van.**

**Our PTC range is the result of our latest development and innovation. It offers a benchmark in term of reduced weight and optimized fitting time.**

**Our well proven C range is the ideal solution for intensive use in hostile environment. It also includes universal mounting brackets.**

## FIND THE OPTIMUM TAIL LIFT FOR PANEL VANS TO 7.9 TON TRUCKS

TYPE	PAYLOAD	SUITABLE FOR GAS VEHICLE AND OEM SPARE WHEEL POSITION	WEIGHT FROM KG	FITTING TIME INDICATION	CYLIN- DER	LOAD CENTER @ 600 MM	SEE PAGE
C 500 VAN/FLEX/PL		NO	151	2:30	2	500/250	4 - 5
PTC 750 L - <b>NEW</b>	3.5 - 5.5 t 	YES	171	2:15	2	600	6 - 7
C 750 L		NO	206	3:00	2	600	6 - 7
PTC 750 S		NO	210	2:30	4	600	6 - 7
C 750 S		NO	210	3:00	4	600	6 - 7
C 750 SPL/R		NO	180	3:00	4	600	6 - 7
PTC 1000 LLW - <b>NEW</b>	5.5 - 7.9 t 	NO	237	2:30	4	600	8 - 9
C 1000 L		NO	287	3:30	4	600	8 - 9

Spare wheel removal and suitability for GNV vehicle depends on chassis type.

The information above is only a general indication and always need fitting study for validation.

The installation time depends on: preparation of the vehicle, the workshop equipment and the level of training of the installation personnel.

# TAIL LIFTS FOR 500 KG CAPACITY

## THE FLEXIBLE TAIL LIFT FOR ALL COMMON VAN TYPES

Van lifts are easy to install and even easier to use for handling trolleys and pallets. A variety of options of the lifts are available to suit the exact need of the operator.

- Individual installation kits for all common van types
- Fast and simple attachment
- Optimum relationship between lifting capacity and weight
- 600 kg lifting capacity on request
- Removable ball-head coupling optionally available
- With aluminium AluLite 30 platform / AluLite 40L for VAN FLEX
- Bridging plate(s) included
- Illuminated registration plate holder



### C 500 VAN

For pallets and trolleys

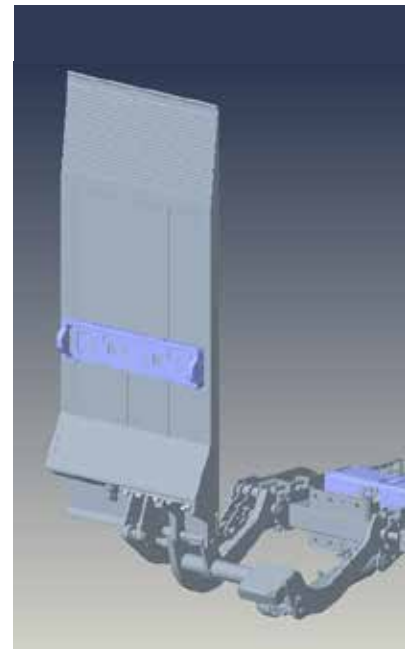
- Full size platform
- Variety of platform dimensions
- With 900 mm roll stop as standard



### C 500 VAN FLEX

Flexibility for every day

- Folding platform providing full size platform and easy access
- Door can be used to step in and out
- With 2 x 450 mm roll stop as standard



### C 500 VAN FLEX PL

For occasional use

- Easy access to the right rear door
- The platform is an addition for intermittent need
- With 1 x 450 mm roll stop as standard





**Ballhead coupling**  
for VAN and VAN FLEX



## Technical Data

1400 x 1575 aluminium platform	C 500 VAN	C 500 VAN FLEX / VAN FLEX PL
Fitting time indication	<b>02:30</b>	<b>02:30</b>
<b>Weight from (kg)*</b>	<b>151</b>	<b>160 / 140</b>
Lifting capacity at 600 mm (kg)	500 (600 optional)	500 (600 optional)
Main beam (mm)	120 x 80	120 x 80
Lifting gear hydraulics	1 lifting cylinder / 1 x tilting cylinder	1 lifting cylinder / 1 x tilting cylinder
Platform overlap with floor (mm)	510	510
Lift arm pitch (mm)	600	600
Load centre - longitudinal	Central, 50% of rated load on one side	Central, 50% of rated load on one side
Inclination angle of the platform	+90 to -10	+90 to -10
* weights incl fitting brackets, warning lights, rollstops, foot control		
<b>Dimensions (mm)</b> 1) see page 6 for explanations		
Lift arms	500	500
H max.	780	780
H min.	450	450
F max.	340	340
K min.	546	546
D min.	814 (926)	814 (926)
<b>Available for</b>		
	Mercedes Benz Sprinter 3 / 5	Mercedes Benz Sprinter (906 / 907)
	VW Crafter / MAN TGE	VW Crafter / MAN TGE
	Iveco Daily	Iveco Daily
	Citroen Jumper (R) / Fiat Ducato / Peugeot Boxer	Citroen Jumper / Fiat Ducato / Peugeot Boxer
	Ford Transit	Ford Transit
	Renault Master / Opel Movano / Nissan NV 400	Renault Master / Opel Movano / Nissan NV 400
	Further vehicles on request	Further vehicles on request

# TAIL LIFTS FOR 750 KG CAPACITY

## THE RIGHT TAIL LIFT FOR ANY APPROACH: LIGHTWEIGHT, STRONG OR UNIVERSAL

In this segment of low and medium lifting capacity, PALFINGER offers light or robust tail lifts - with either two or four cylinders. The product differentiations are listed here.



### Technical Data

1600 x 2100 aluminium platform	2 cylinders		4 cylinders	
	PTC 750 L - <i>NEW</i>	C 750 L	PTC 750 S	C 750 S / SPL/R
Fitting time indication	<b>02:15</b>	<b>03:00</b>	<b>02:30</b>	<b>03:00</b>
Weight from (kg)	175*	206	223*	216 / 180
Lifting capacity at 600 mm (kg)	750	750	750	750
Main beam (mm)	Beam box system	128 x 80	Beam box system	128 x 80
Lifting gear hydraulics (cylinder)	1 lifting / 1 tilting	1 lifting / 1 tilting	2 lifting / 2 tilting	2 lifting / 2 tilting
Platform overlap with floor (mm)	-57	-57	-44	-44
Lift arm pitch (mm)	Depending on vehicle	620	Depending on vehicle	460 / 1120 / 1240
Load centre - longitudinal (mm)	600	600	600	600
Load centre - across centre	Central 50% of rated load on one side	Central 50% of rated load on one side	Central 50% of rated load on one side	Central 50% of rated load on one side
Inclination angle of the platform	+90 to -10	+90 to -10	+90 to -10	+90 to -10

\* weights incl fitting brackets, warning lights, rollstops, foot control

### Dimensions (mm) <sup>1)</sup>

Lift arm length	600	600	550	680	550	680
H max.	1074	1080	990	1190	990	1190
H min.	702	680	640	800	700	880
F max.	584	580	540	640	540	640
K min.	560	443	417	501	419	503
D min.	567	565	552	636	517	601
F min.	397	470	375	500	370	490
K max.	585	578	550	625	555	624
D max.	708	700	686	762	664	733
G max.	490	500	450	550	450	550
G min.	305	260	265	300	330	390

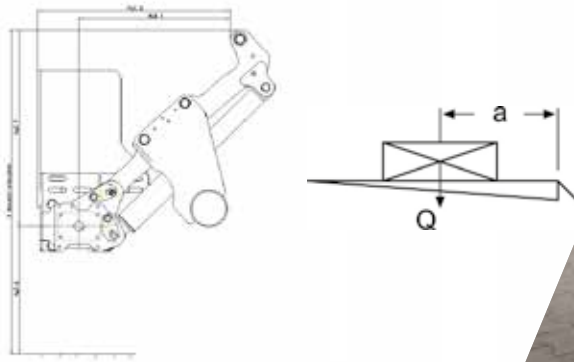
### Available for

MB Sprinter 3 / 5 BM 907	MB Sprinter 3 / 5	MB Sprinter 3 / 5 BM 907 / 4 BM 910	MB Sprinter 3 / 4 / 5
VW Crafter / MAN TGE 30 / 35 / 50	VW Crafter 30 / 35 / 50	VW Crafter / MAN TGE 50	VW Crafter 30 / 35 / 50
Iveco Daily (C-Profile) 35C-72C	Iveco Daily (C-Profile) 35C-72C	Iveco Daily (C-Profile) 35C-72C	Iveco Daily (C-Profile) 35C-72C
Citroen Jumper (Relay)	Citroen Jumper (Relay)	Mitsubishi FUSO Canter 3C-7C18	Citroen Jumper
Fiat Ducato / Peugeot Boxer	Fiat Ducato / Peugeot Boxer	/ 3S-6S15	Fiat Ducato / Peugeot Boxer
Ford Transit FT 330-470 V363	Ford Transit 330-470 V363	Ford Transit FT 330-470 V363	Ford Transit 330-470 V363
Renault Master X62 FWD/RWD	Renault Master X62 FWD/RWD	Renault Master X62 FWD/RWD	Renault Master X62 FWD/RWD
Opel Movano X62		Opel Movano X62	Opel Movano X62
Nissan NV400 FWD/RWD		Nissan NV400 FWD/RWD	Nissan NV400 FWD/RWD
Further vehicles on request	Further vehicles on request	Further vehicles on request	Further vehicles on request

<sup>1)</sup> H (max.) loading height, unloaded / H (min.) loading height, loaded / F (max.) middle of beam boxes to upper edge of loading floor / K (min.) at dimension F (max.)

D (min.) installation dimension, minimum / F (min.) / K (max.) at dimension F (min.) / D (max.) installation dimension, maximum / G (max.) unloaded (middle of beam box to ground)

G (min.) loaded



### Specification

The diagram shows the dimensions / distances of the lifting gear and the distances of the load position.

More details can be found on the website:  
[www.palfinger.com/en-gb/products/tail-lifts](http://www.palfinger.com/en-gb/products/tail-lifts)



### Lightweight lifting gear

Lifting gear and components of the L versions are especially light in order to minimize the weight of the entire tail lift.



### PTC 750 L

The light tail lift

- The lightest tail lift in our 750 portfolio
- Innovative mechanism provides a smooth and perfect horizontal platform from ground to upper loading position
- Customized with dedicated mounting brackets for various vehicles (bottom left side)
- Compact design for optimized transport and quick fitting
- Retrofit for ball head coupling

### C 750 L

The proven, robust and versatile tail lift

- Torsion-resistant two-cylinder lifting mechanism (main-beam concept) with parallel movement to the floor
- Simple installation thanks to bolted mounting plates
- Mounting plates interchangeable with C 750 S for stocking purposes



### PTC 750 S

The strong tail lift

- Robust four-cylinder lifting mechanism
- Bolted mounting plates
- Easy installation - no adjustments at the lifting arm
- Retrofit for ball head coupling

### C 750 S and SPL/R

The flexible tail lift

- Robust four-cylinder lifting mechanism
- Mounting plates interchangeable with C 750 L for stocking purposes
- Single piece underrun protection device / optional as three-piece device
- Fixture for a ball-head coupling is available with 3-piece underrun device

### Also available as partial platform (SPL / R)

For easy access to body - can be attached on the right or left

# TAIL LIFTS FOR 1000 KG CAPACITY

In this segment PALFINGER offers a robust and universal tail lift, our proven C 1000 L. New in the portfolio is the absolute weight benchmark, starting from only 237 kg, the PTC 1000 LLW is the **LIGHTEST** 1000 kg tail lift in the entire market. Thanks to its four cylinders, the tail lift is very stable and the most reliable for the 5 to 7.99 tons segment. The lightweight design is the perfect solution for customers who look for maximized payload, less fuel consumption and reduced carbon footprint. At the same time the quick and easy installation caters for minimized fitting costs.



## PTC 1000 LLW

The lightest in the market

- Approx. 50 kg less net weight than C 1000 L
- Customized with specific mounting brackets for various vehicles (below)
- Dedicated mounting brackets for a simple and quick installation
- Single-piece underrun protection device
- Swan-neck ballhead coupling also as retrofit
- Available with AluLite 30 platform

## C 1000 L

The proven, robust and versatile tail lift

- Universal eco mounting brackets for multiple different vehicles
- Three-piece underrun protection device
- Ball head coupling available (retrofit must be welded)
- Available with AluLite 30/40L or Ferrostar (steel) platform

## Technical Data

### 1800 x 2300 aluminium platform

### PTC 1000 LLW - *NEW*

### C 1000 L

#### Fitting time indication

**02:30**

**03:30**

Weight from (kg)	237*	287
Lifting capacity at 600 mm (kg)	1000	1000
Main beam (mm)	Beam box system	180 x 180
Lifting gear hydraulics	2 lifting cylinders / 2 tilting cylinders	2 lifting cylinders / 2 tilting cylinders
Platform overlap with floor	- 44 mm	- 44 mm
Lifting arm pitch (mm)	Depending on vehicle	1100 / 1320
Load centre, longitudinal (mm)	600	600
Load centre, across centre	Central, 50% of rated load on one side	Central, 50% of rated load on one side
Inclination angle of the platform	+90° until -10°	+90° until -10°
* weights incl fitting brackets, warning lights, rollstops, foot control		

Lifting arm lengths (in mm)	590	680	600	700
H (max.)	1030	1150	1100	1210
H min.)	698	808	750	830
F (max.)	536	600	620	650
K (min.)	493	557	467	592
D (min.)	635	710	617	742
F (min.)	414	508	420	500
K (max.)	586	633	652	721
D (max.)	728	787	802	871
G (max.)	494	550	330	330
G (min)	284	300	480	560
Available for	Mercedes Benz Atego / Sprinter 5 t		Mercedes Benz Atego 7.5 / Sprinter 5 t	
	VW Crafter 5 t / MAN TGE & TGL		MAN TGL / TGM 8 - 12 t	
	Iveco Eurocargo, Iveco Daily 50C - 72C		Iveco Eurocargo, Iveco Daily 50C - 120E	
	Mitsubishi Fuso SZ		Mitsubishi Canter 7C - 9C	
	Renault D 7.5 (Midlum)		Renault D series until 12 t	
			Isuzu 5 - 8 t, DAF, Volvo 8 - 12 t	

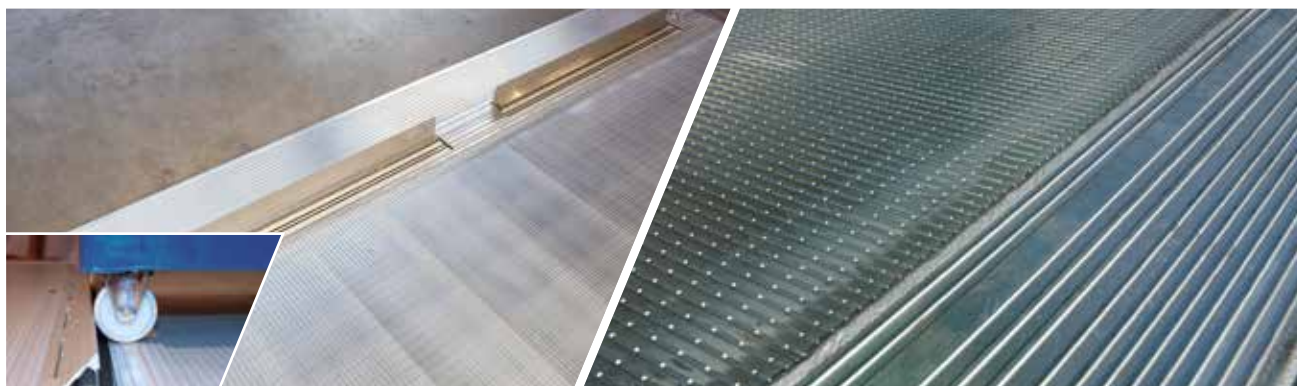
5.5 - 7.9 t







# PLATFORM STANDARDS & OPTIONS



## AluLite 30 / 40

Proven platform from in house production

- Ferrostal (steel) platform optional on certain models
- Anodized (Option)
- Variety of roll-stops (Options)

## Cross grooves (Standard)

Single or double cross grooves (Option)

- Cross grooves anti slip class R10 i.a.w. DIN 51130
- Double cross grooves anti slip class R12 (Option)



## LED flashing lights (Option)

Safety device

- Modern long life LED technology
- With protection bar (Option)

## Painting of the platform (Option)

Customization

- Standard RAL colors available
- Special laquer on request



## Seal kit (Option)

- 4 sided sealing the platform against the body
- No need to fit heavy costly rear doors

## Plastic-coating (Option)

- Noise reduction (PIEK)
- Anti slip protection anti-slip-class R 12 i.a.w. DIN 51130
- Protection for the platform surface



# LIFTING GEAR STANDARDS & OPTIONS



## Single-piece underrun protection device (Standard)

Compliant with new UN/ECE R58 Amendment 03

- Optional 3-piece protection device on certain models
- KTL coating for excellent corrosion protection
- KTL plus powder coating in a RAL color on request
- Microzinc on request



## Power pack with integrated control (Standard)

- Easy maintenance
- Temperature resistant down to -25°C
- Organic oil or antifreeze oil (Option)



## Mechanical / hydraulic stabilizer (Option)

- To stabilize the vehicle during loading / unloading



## Stainless steel pins (Standard)

- Highest corrosion resistance
- Easy to install and maintain thanks to patented design



## Various ball head couplings (Option)

For most vehicles in this segment the device is available / retrofit

- Please see website for details  
[www.palfinger.com/en-gb/products/tail-lifts](http://www.palfinger.com/en-gb/products/tail-lifts)



## Customized packaging (Option)

Space-saving transportation pallet

- Optimizing despatch and storage
- Ease of installation

# OPERATIONS STANDARDS & OPTIONS



## **Slim control panel (Standard)**

Ergonomic

- Flat or bracket mounted (Standard)
- Including background illumination (Option)



## **Hand control (Option)**

2-button or 3-button

- Including wanderlead and bracket
- With integrated magnet and eyelet



## **Remote Control Bluetooth (Option)**

- Standard lifting operations
- Plus two buttons can be customized to specific requests



## **3 + 1 Push button control (Option)**

- Two-hand-operation for the installation within the body
- Or by means of retaining plates below the body



## **Foot control (Option)**

For the easy „hand-free“ operation

- Traversable
- Safety bar (Option)



## **Operating position (Standard with hand control)**

When using hand control or remote control

- Milled into platform surface
- Abrasion-resistant



# SENSORS & SOFTWARE OPTIONS



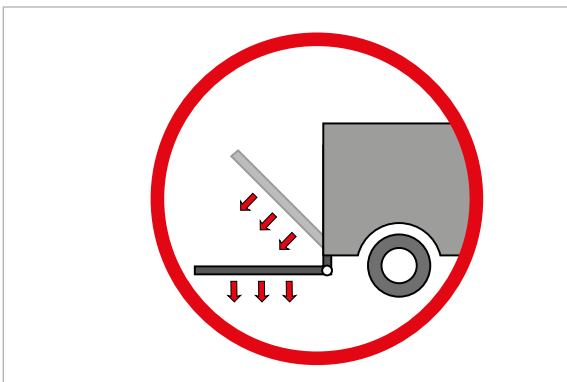
**PC board**  
MBB Control

- Facility to connect with diagnosis software
- Self-diagnosis possible



**Sensor B 15 S**  
Plug & play

- Quick connection of the platform
- Easily installed: Sensor B 15 S („plug&play“)



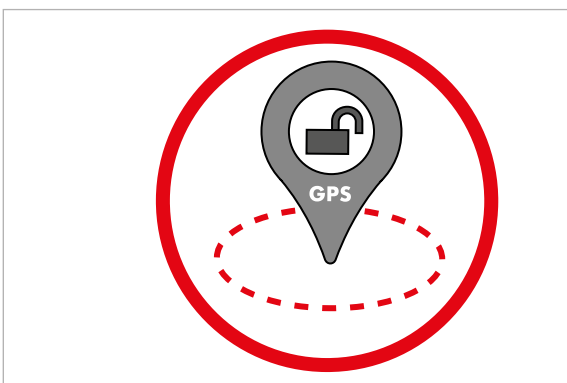
**QuickDown (Option)**  
Customizable program

- Opening and lowering of the platform simultaneously
- More efficient loading/unloading
- Quick access to the goods



**SmoothTilting (Option)**  
Customizable program

- Automatic slow down of platform speed to adapt to fragile loads
- Precision movement



**GeoFencing (Option)**  
Customizable program

- Tail lift opening only allowed in pre-set GPS areas



**ETMA\* interface (Option)**  
For preconfigured vehicles

- Easy and quick connection

\* European Tail Lifts Manufacturers Association (previously VEHH)

# ONE REMOTE CONTROL FOR ALL APPLICATIONS

The new remote control BT (= Bluetooth®) has been developed for optimized user-friendliness. An ergonomic design, the easy to grip surface and the low weight all contributes to the new hand held unit. The technology of this remote control allows a usage in demanding daily business even in alternating operations with various vehicles and a number of remote controls.

## Advantages of the Remote Control BT

- Easy operation
- Customizable applications
- Robust and lightweight
- Water resistant
- Shock resistant
- Quick charge and long life of battery
- USB-C charging interface
- Bi-directional communication
- Bluetooth® wireless technology



# THE SLIM PANEL FOR CONVENIENT OPERATIONS

The new slim control panel is the latest way to control your tail lift with state-of-the-art technology. Its patent-protected design provides various opportunities for vehicle installation. The tail lift operation becomes more comfortable than ever.

## Advantages of the slim control panel

- Flat design
- Robust and lightweight
- Water resistant
- Shock resistant
- Ergonomic position for ease of operation
- Illumination (plus/premium versions)
- Individual programming (premium version)
- Can be mounted also within vehicle body



SPECIFICATIONS		BASIC	PLUS	PREMIUM
Voltage:	12 and 24 Volt	✓	✓	✓
Design:	Flat design for vehicle body installation	✓	✓	✓
	Ergonomic push button arrangement with bracket	—	✓	✓
Illumination:	Display	—	✓	✓
	Push buttons	—	—	✓
Interlock:	Keycode for locking	—	✓	✓
Processor:	Integrated processor	—	—	✓
Display:	Additional double 7-segment LED display	—	—	✓

# CUSTOMER CARE & LIFETIME SERVICES

## Maximized availability

Our products are premium quality and provide high capacity usage. Excellent durability and hi-tech manufacturing result in a range of extremely robust and reliable tail lifts. If, however, support is needed, PALFINGER provides comprehensive support for repairs, maintenance and the ordering of spare parts. For more information and to make use of our service partner search, please visit

**[WWW.PALFINGER.COM/EN/SALES-SERVICE-SEARCH](http://WWW.PALFINGER.COM/EN/SALES-SERVICE-SEARCH)**



**Long lasting wearing parts**

Latest manufacturing technologies cater for premium components. All platforms and components are developed and manufactured in accordance with the Machinery Directive 2006/42/EC, the EN 1756-1 for tail lifts and other regulations.



**Service partner network**

Find your service partner via web search or app. More than 300 service partners in France, more than 40 service partners in the UK and more than 900 service partners in Germany / Austria / Switzerland.

Call us at +44 (0) 80800 24 365



**Service app**

The PALFINGER tail lifts diagnosis system is part of the PALCODE which may help localizing and repairing faults.



**Technical support & training**

Telephone support from skilled service personnel.  
Tel. +44 (0) 80800 24 365  
Email: [salesadmin@palfinger.com](mailto:salesadmin@palfinger.com)  
In addition, technical individual/group training courses are offered.



**Service technicians**

Field service of skilled service personnel who will minimize down times and maximize performance of the tail lift.



**Warranty**

24 months warranty on parts and labour are included as standard in France, Germany, Austria and UK.



# PALFINGER ORIGINAL SPARE PARTS AVAILABILITY

With original spare parts your tail lift remains an original keeping it safe and reliable



The flawless functionality of the tail lift is an essential element when it comes to maintaining the efficiency of a truck. PALFINGER therefore believes in the originality of its spare parts! They are perfectly matched to the tail lifts and therefore simplify the installation / replacement or retrofit.

## **There are many reasons to use PALFINGER original spare parts:**

- The spare parts correspond to the current state of product technology
- Reduction of maintenance and repair costs: e.g. faster installation due to exact fit of spare parts and lift
- The required spare parts are delivered quickly and easily - including next day in regions where express delivery is available

## **The advantages of the online shop:**

- Detailed information of parts required including available stock
- Allocation of shop access with individual display to end customers
- Free shipping is possible in Germany (standard shipping via UPS)!

## **The multilingual online shop enables fast and easy ordering of spare parts 24/7:**

- Spare parts orders with availability check & shipment tracking
- Online warranty claims for tail lifts and spare parts, warranty extensions, E-Claim



**WWW.EETK.EU**

