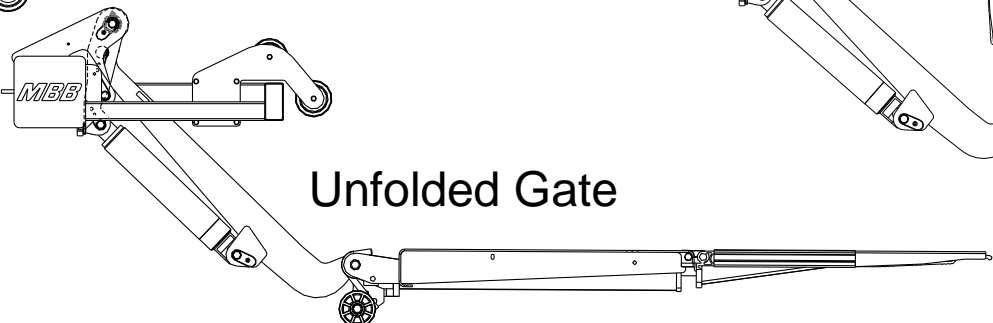
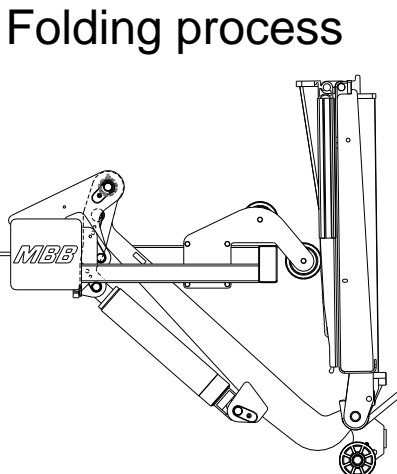
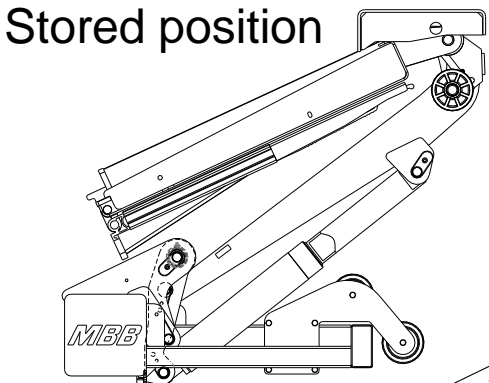
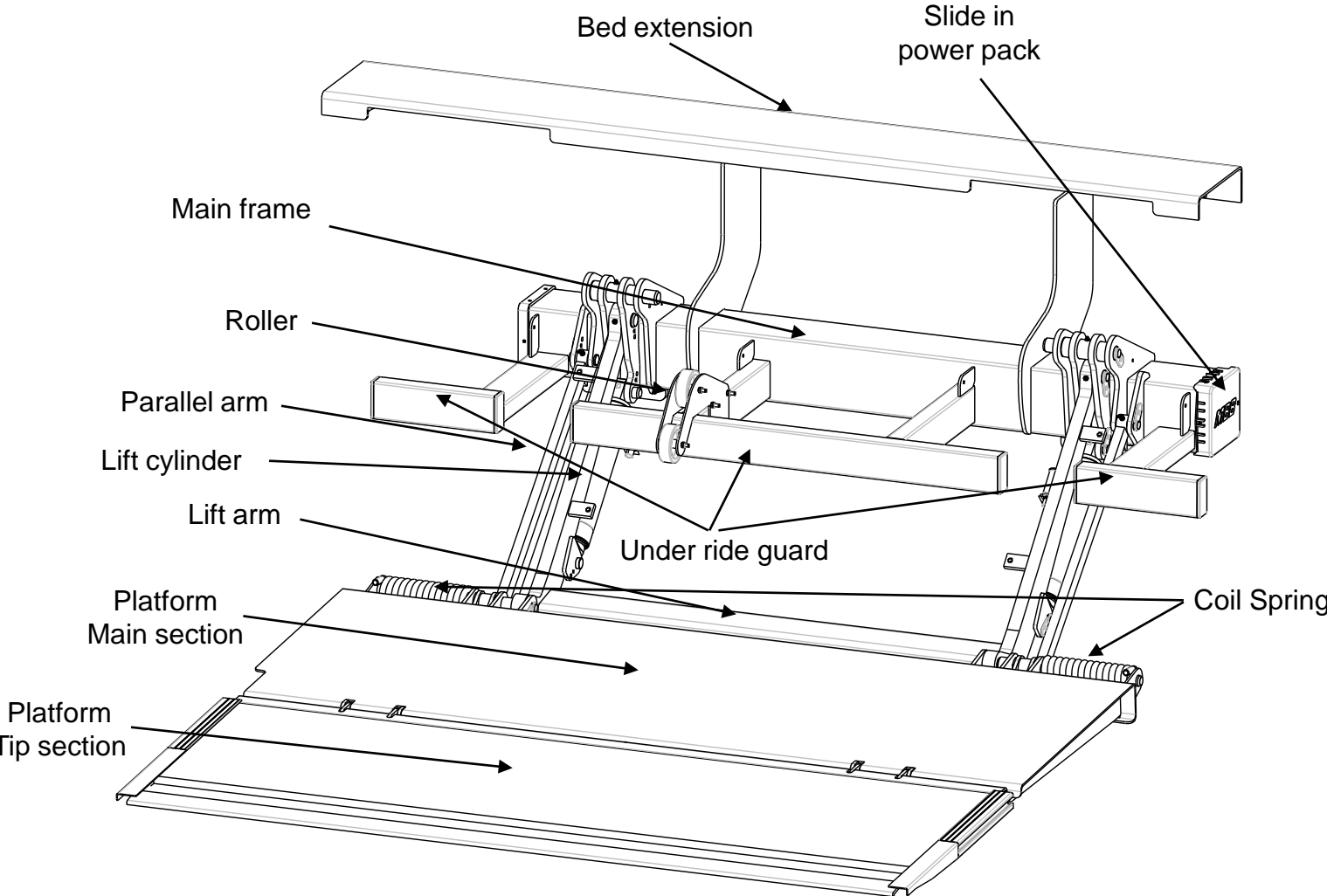
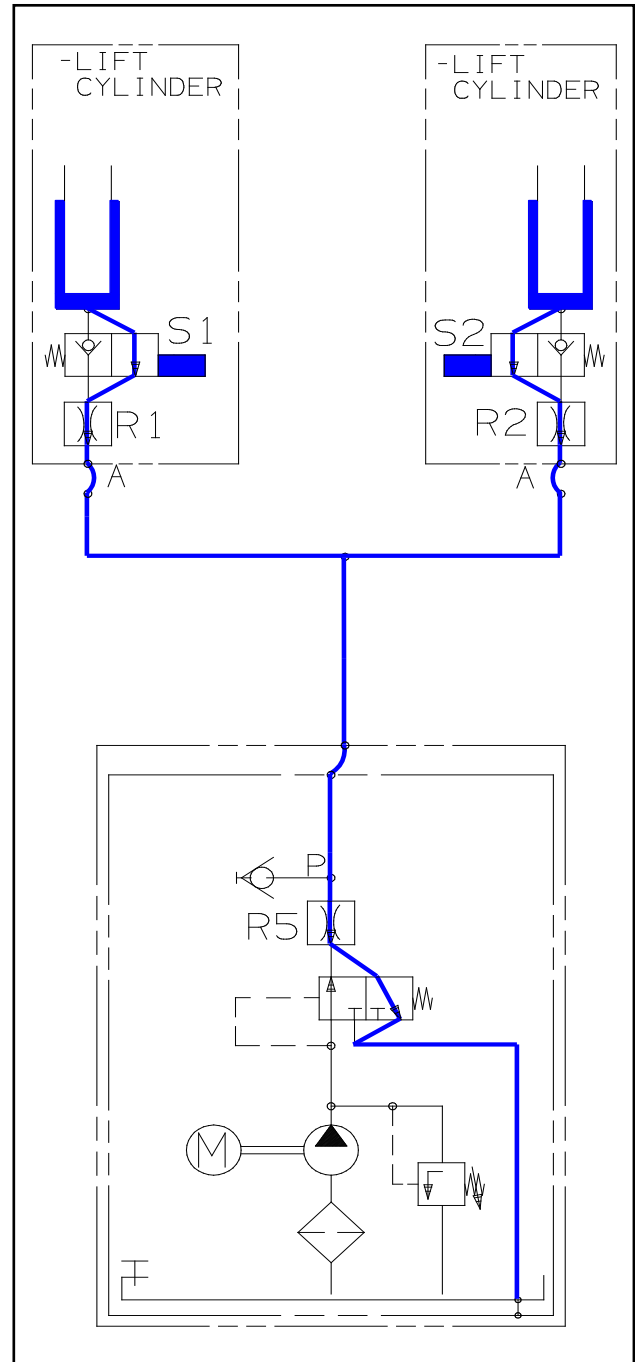
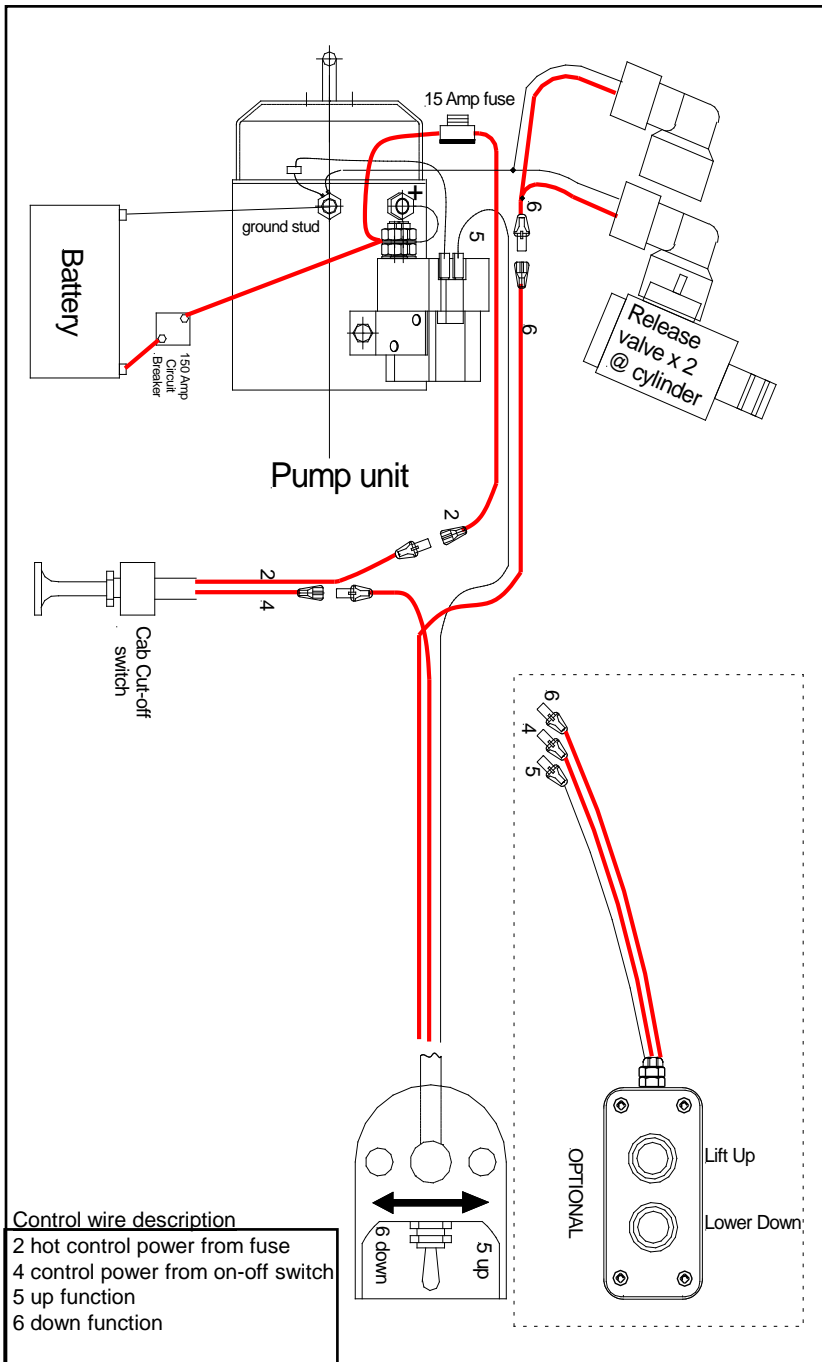


ILT- Series

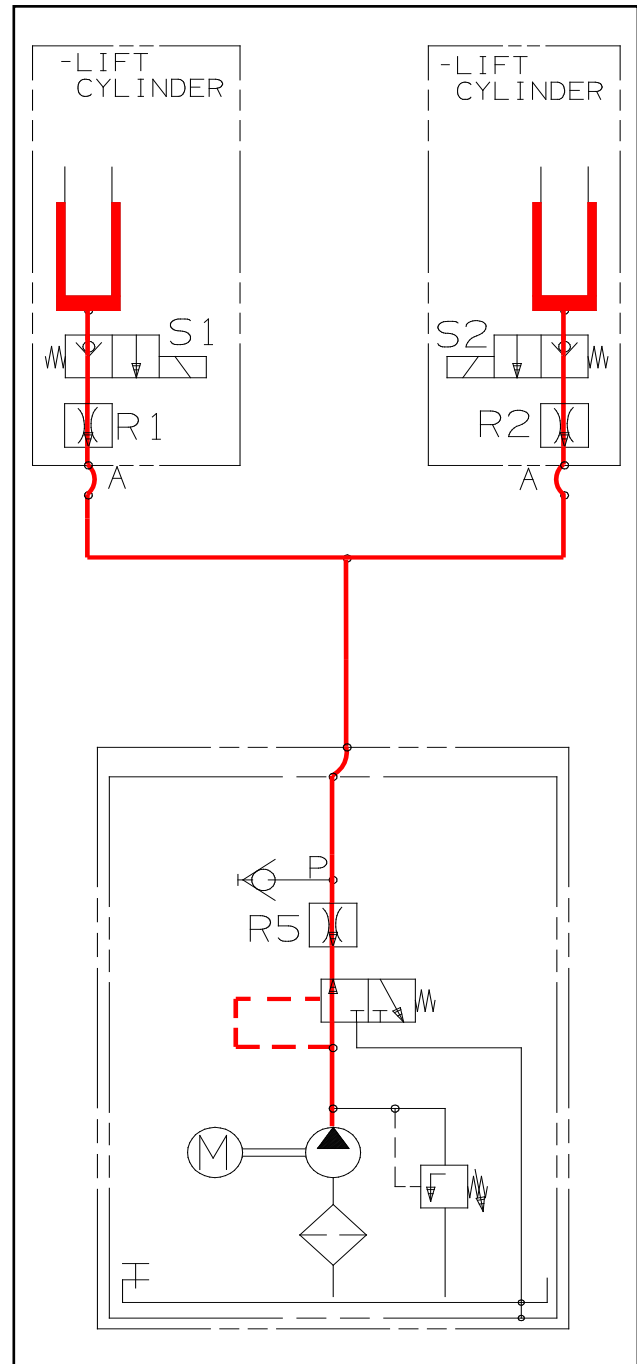
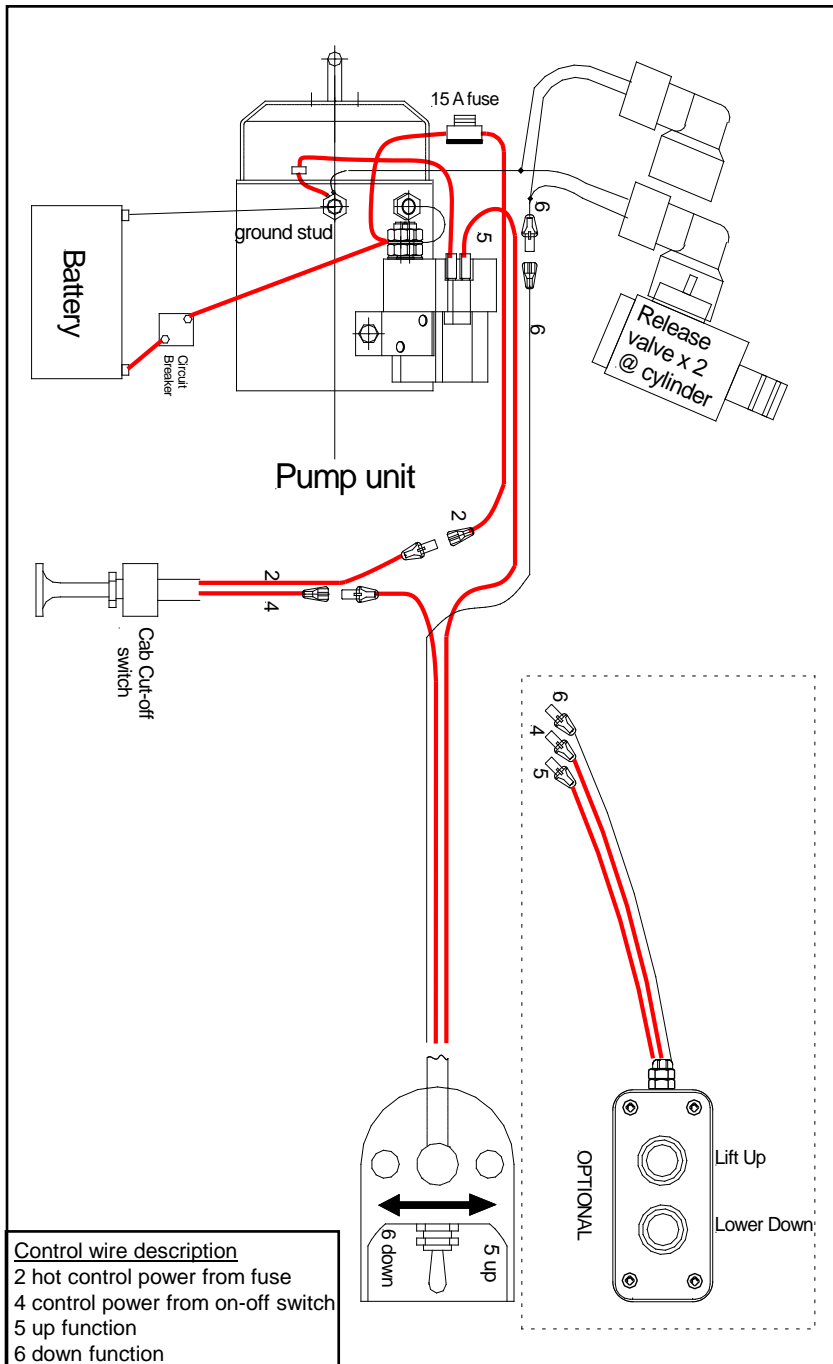


Lower down gate - functional description



- Pump and Motor power is supplied by the battery, protected by a 150 Amp Circuit Breaker
 - Control power is protected by 15 Amp fuse connected to positive motor solenoid stud
1. To turn on gate - activate Cab cut-off switch – control power gets routed to switches (#4 hot)
 2. Activate the down function at toggle switch or at hand control (optional)(#6 hot)
 3. Power gets routed to the release valves (S1 and S2) at the lift cylinders to open up the valves
 4. Hydraulic fluid gets released out of the cylinders and is flowing back into the reservoir

Lift up gate - functional description



- Pump and Motor power is supplied by the battery, protected by a 150 Amp Circuit Breaker
 - Control power is protected by 15 Amp fuse connected to positive motor solenoid stud
1. To turn on gate - activate Cab cut-off switch – control power gets routed to switches (#4 hot)
 2. Activate the up function at toggle switch or at hand control (optional) (#5 hot)
 3. Power gets routed to the motor solenoid, which makes contact to activate motor
 4. Hydraulic fluid gets pumped through the valves into the cylinders
→ piston rods extend – lift gate raises up