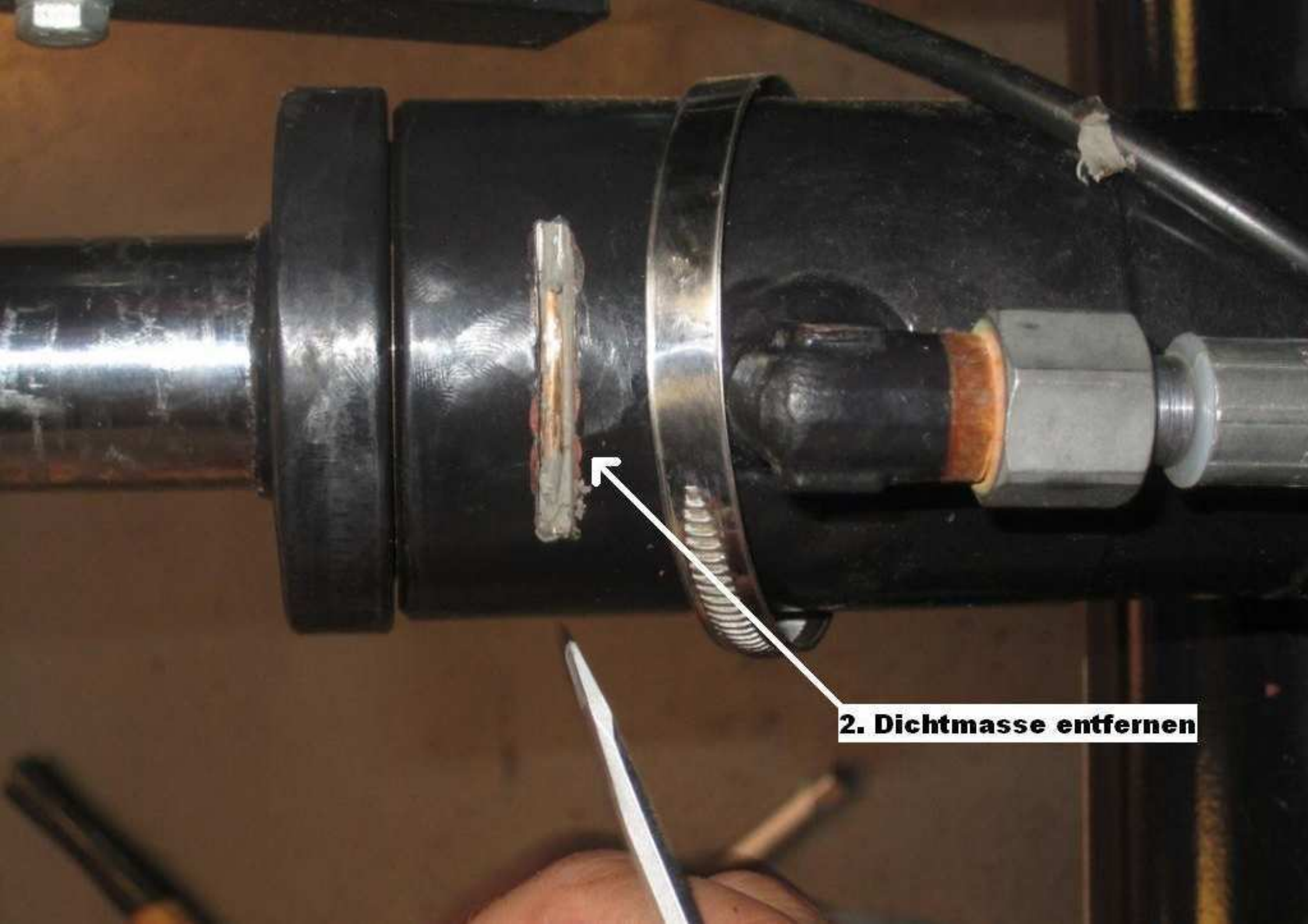


Dichtsatz wechseln eines Kippzylinders:

1. Faltenbalg demontieren

A close-up photograph of a hydraulic cylinder assembly. The central focus is a long, horizontal, ribbed rubber bellows seal that appears worn and discolored. The seal is mounted between two metal components. To the right, a black hydraulic cylinder is visible, with a white plastic fitting attached. The background shows a dark metal frame with various holes and bolts. In the bottom right corner, a yellow and black logo with the letters 'MBB' is partially visible.



2. Dichtmasse entfernen



3. Führungsbuchse soweit drehen, ...

**... bis der Anfang des
Kupferdrahtes zu sehen ist.**



4. Draht rausdrehen, z.B Mithilfe eines Schraubendrehers.



5. Beide Hydraulikschläuche lösen.



6. Bolzen oben entfernen



A close-up photograph showing a person's hand pulling a piston rod from an engine. The piston rod is a long, silver metal shaft. The person is holding a black handle attached to the end of the rod. The engine is red and black. A black metal bracket is visible, which is part of the engine's internal mechanism. The text "7. Kolbenstange rausziehen" is overlaid on the image. The brand name "MBB PALFIN" is visible on the black frame of the engine.

7. Kolbenstange rausziehen

MBB PALFIN

8. Dichtsatz erneuern





9. Magnetventil entfernen



**Magnetventil bei Montage
mit 25 - 30 Nm anziehen!**

10. Kolbenstange wieder einführen.



A close-up photograph of a mechanical assembly. A central vertical shaft is visible, with a dark, cylindrical sleeve or bushing sliding over it. The sleeve has a hole on its side. Below the sleeve, a silver-colored metal ring with a ribbed inner edge is positioned. The background is a light-colored wall with some blurred mechanical parts.

11. Führungsbuchse drehen, bis die Bohrung für den Sicherungsdraht sichtbar ist.



12. Sicherungsdraht einführen, eindrehen und die Nut wieder abdichten.





13. Faltenbalg, Hydraulikschläuche, Magnetventil montieren und den Zylinder wieder befestigen.